

Shetek WMA  
East Unit

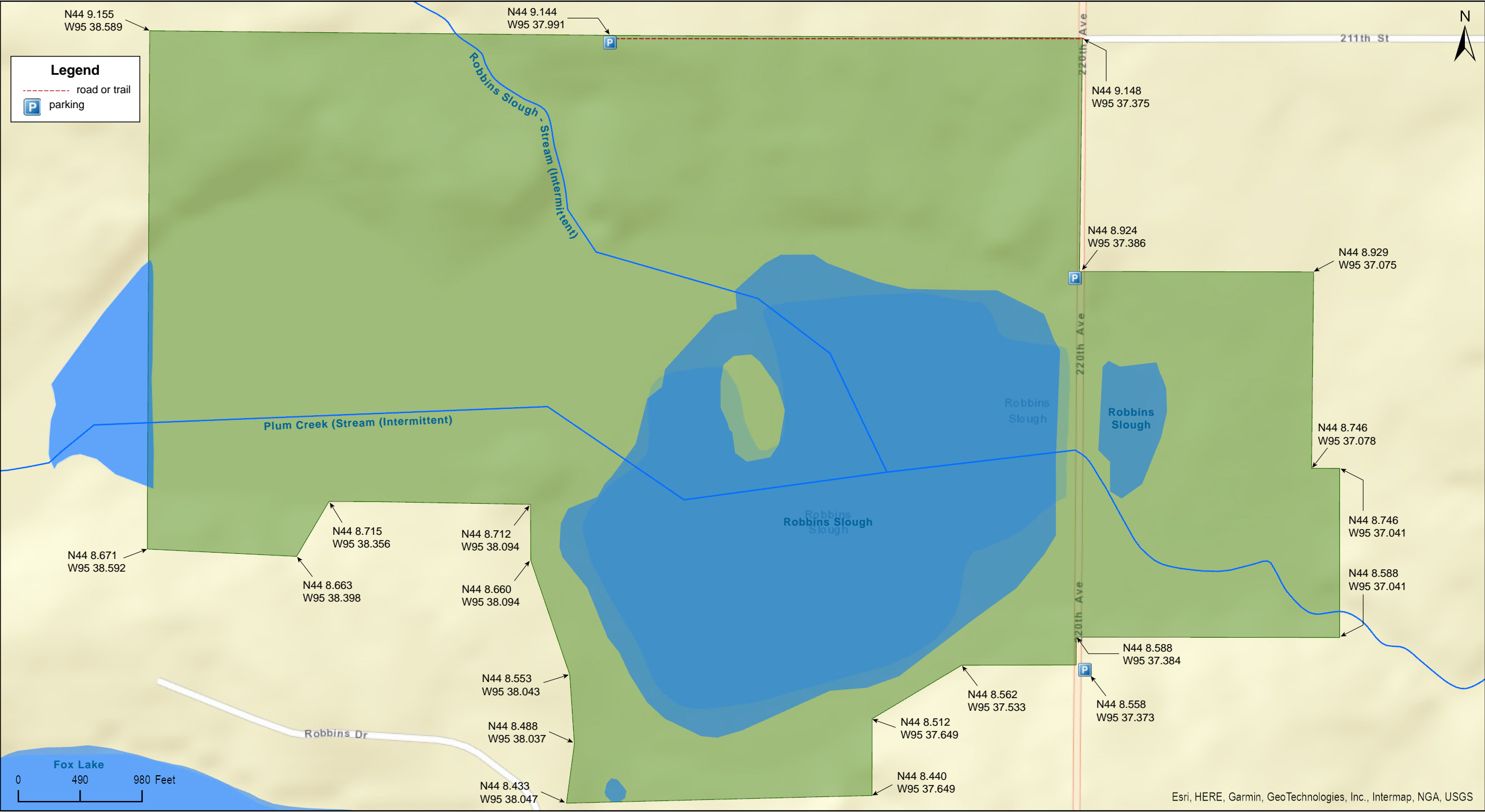
Murray County





Shetek WMA  
East Unit

Murray County





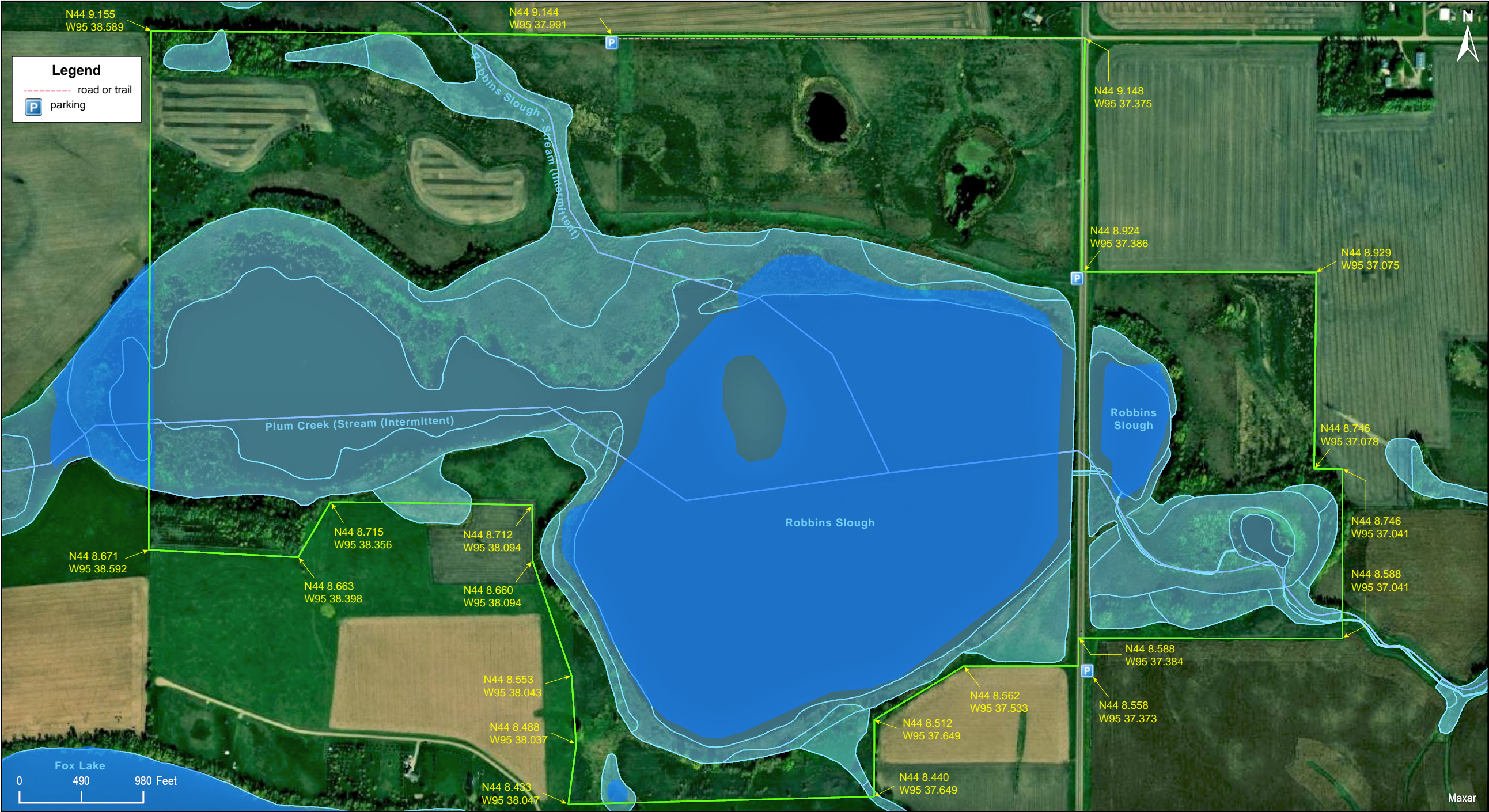
Shetek WMA  
East Unit

Murray County





Shetek WMA  
East Unit





## Murray County





# Shetek WMA

## East Unit

### Directions and Notes from Minnesota DNR

#### Directions

From Tracy, go 5.5 miles south on County Road 38.

### Notes from MinnesotaSeasons.com

#### Parking

There is a field approach on the west side of County Road 38 (220th Ave.)  
N44 8.924, W95 37.386

There is another field approach on the east side of County Road 38 (220th Ave.)  
N44 8.558, W95 37.373

Beyond County Road 38, 211th St. becomes a minimum maintenance road. Follow it 0.7 miles to the end. There is a parking lot with a natural grass surface on the south side.  
N44 9.144, W95 37.991

When parking across a field approach, care should be taken to avoid blocking access to the field.

### DISCLAIMER OF WARRANTIES AND LIMITATIONS OF LIABILITY

MinnesotaSeasons.com, The Nature Conservancy, U.S. Department of Agriculture, Forest Service, U.S. Fish and Wildlife Service, the state of Minnesota, the Minnesota Department of Natural Resources, and their employees, make no representations or warranties, express or implied, with respect to the use of or reliance on the data provided herewith, regardless of its format or means of transmission. There are no guarantees or representations to the user as to the accuracy, currency, completeness, suitability or reliability of this data for any purpose. THE USER ACCEPTS THE DATA AND/OR SOFTWARE "AS IS" AND ASSUMES ALL RISKS ASSOCIATED WITH ITS USE.

IN NO EVENT SHALL MINNESOTASEASONS.COM, TNC, USDA-FS, USFWS, OR MNDNR BE LIABLE FOR ANY DIRECT, INDIRECT, INCIDENTAL, SPECIAL, EXEMPLARY, OR CONSEQUENTIAL DAMAGES (INCLUDING, BUT NOT LIMITED TO, PROCUREMENT OF SUBSTITUTE GOODS OR SERVICES; LOSS OF USE, DATA, OR PROFITS; OR BUSINESS INTERRUPTION) HOWEVER CAUSED AND ON ANY THEORY OF LIABILITY, WHETHER IN CONTRACT, STRICT LIABILITY, OR TORT (INCLUDING NEGLIGENCE OR OTHERS) ARISING IN ANY WAY OUT OF THE USE OF THIS DATA, EVEN IF ADVISED OF THE POSSIBILITY OF SUCH DAMAGE OR FOR ANY CLAIM BY ANY OTHER PARTY.

Your use of the data is acceptance on your part of the terms and conditions set forth herein.