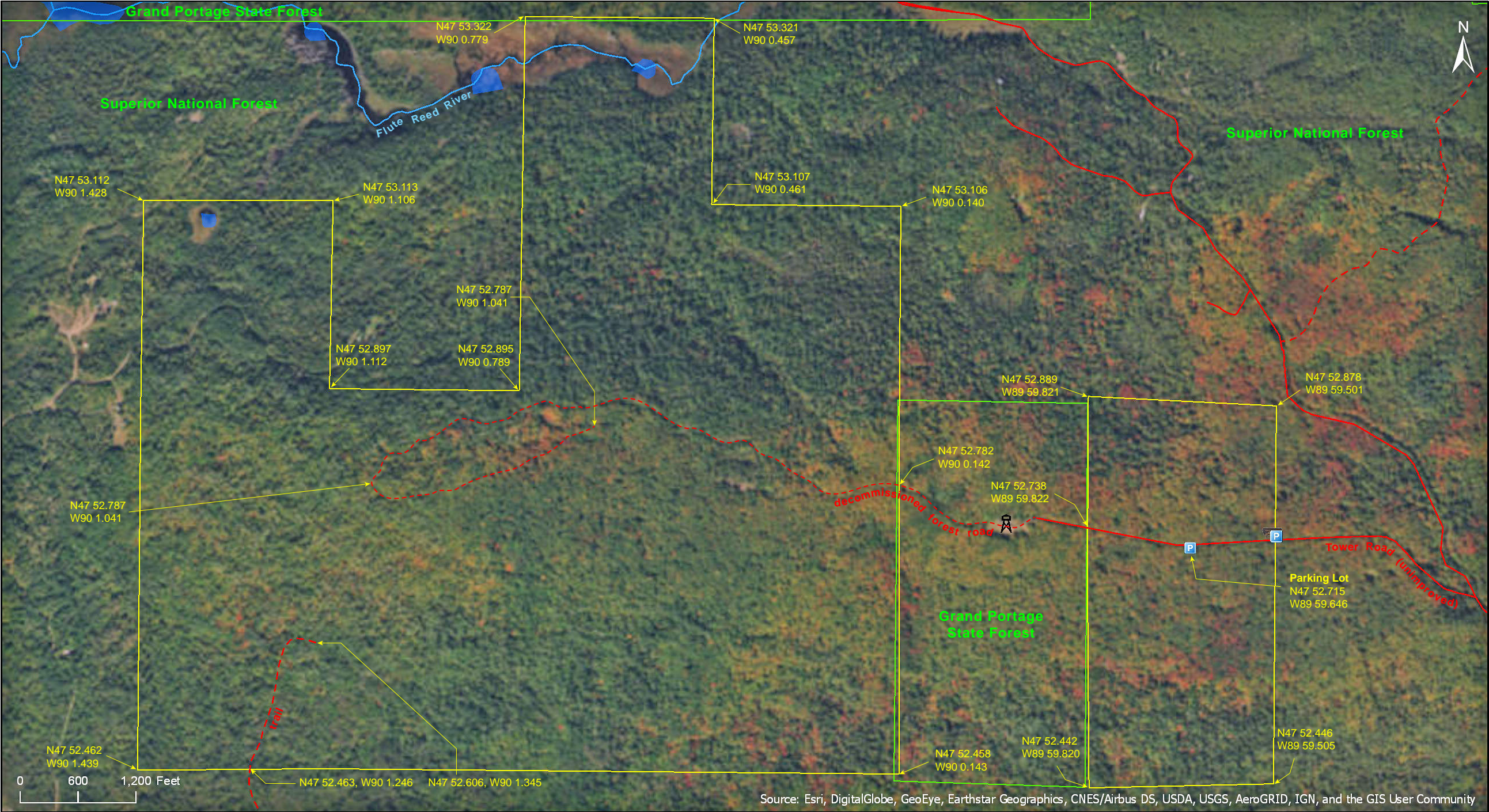


Spring Beauty Northern Hardwoods SNA

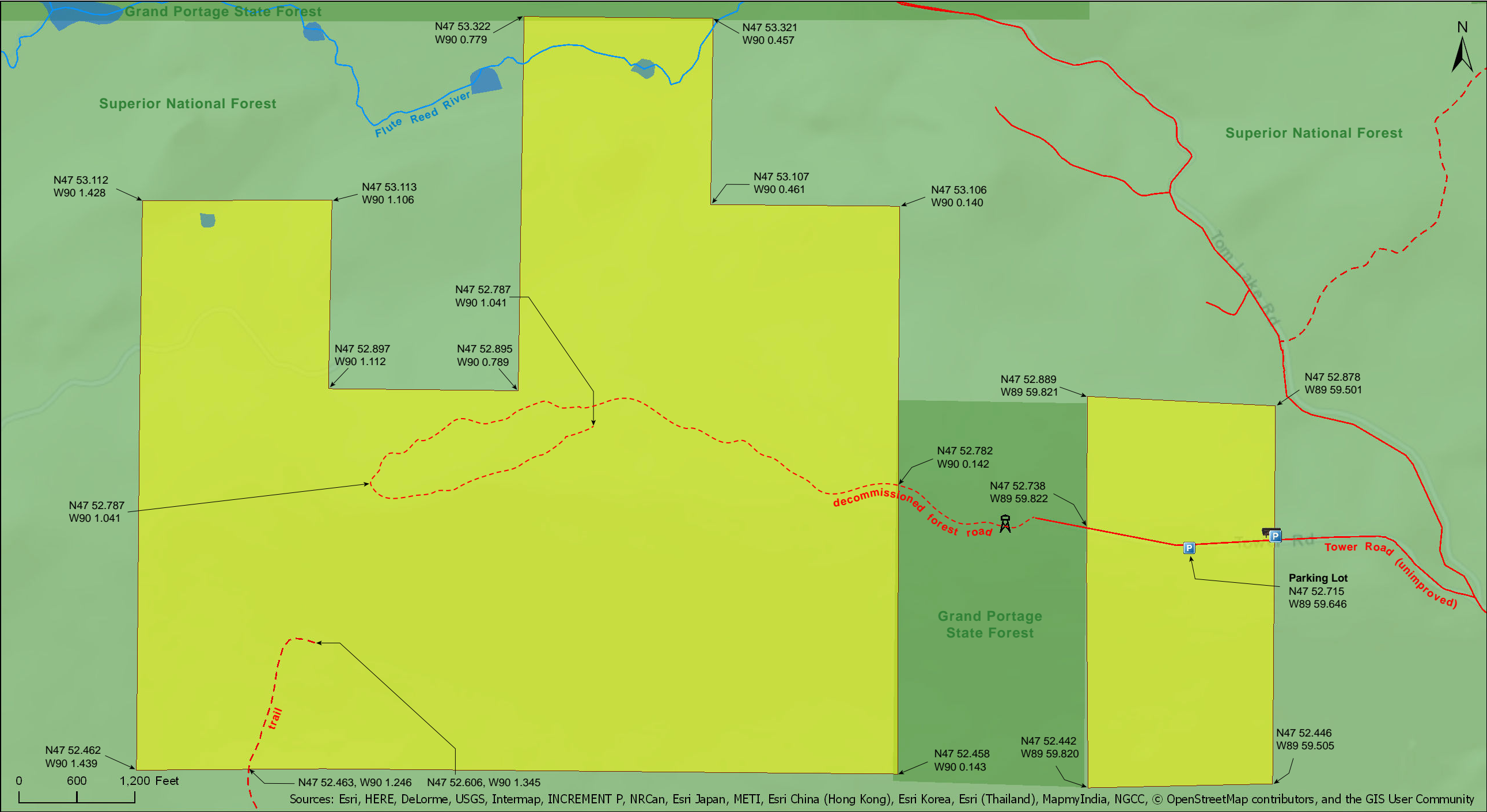
Cook County



Source: Esri, DigitalGlobe, GeoEye, Earthstar Geographics, CNES/Airbus DS, USDA, USGS, AeroGRID, IGN, and the GIS User Community

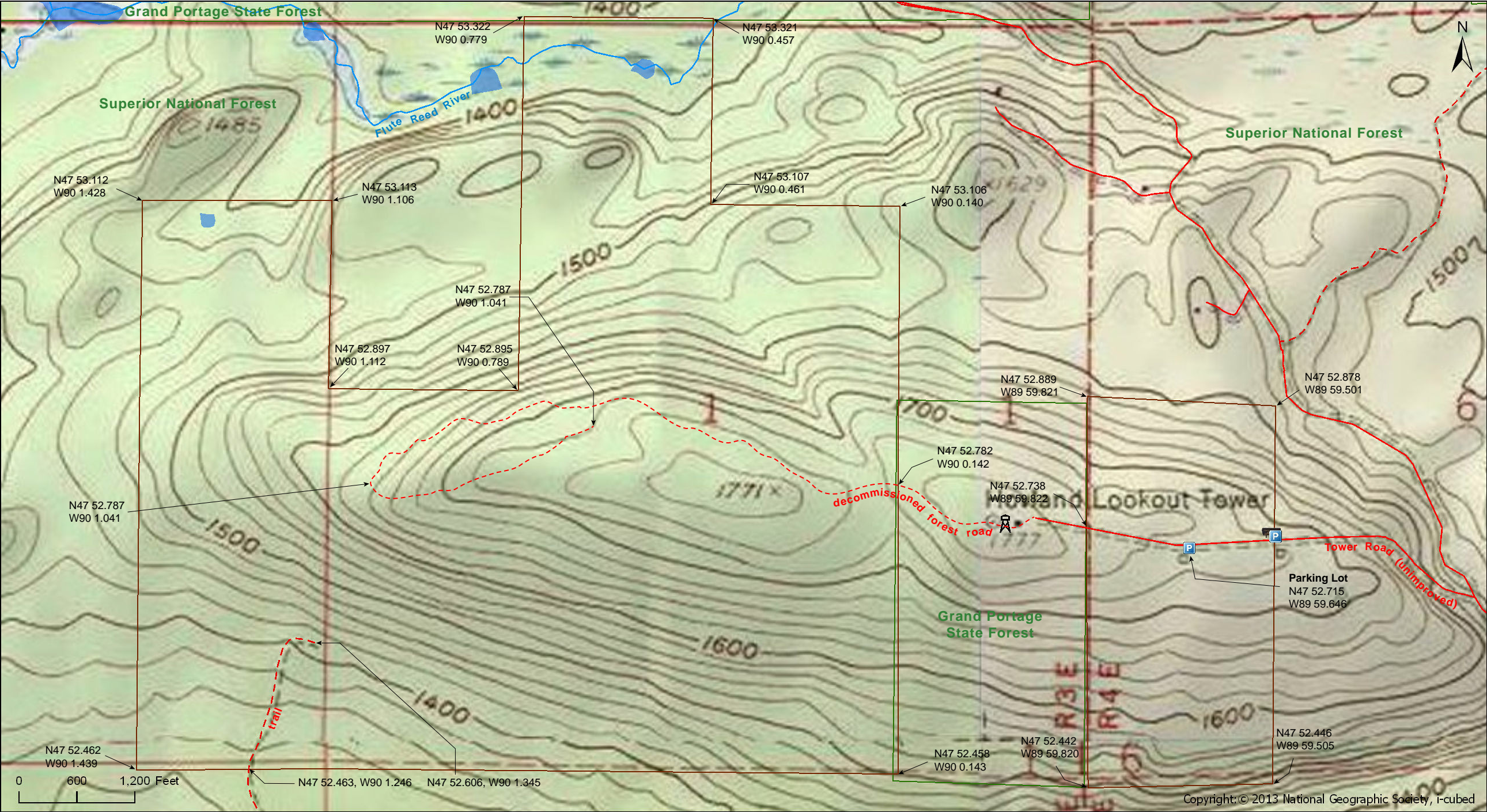
Spring Beauty Northern Hardwoods SNA

Cook County



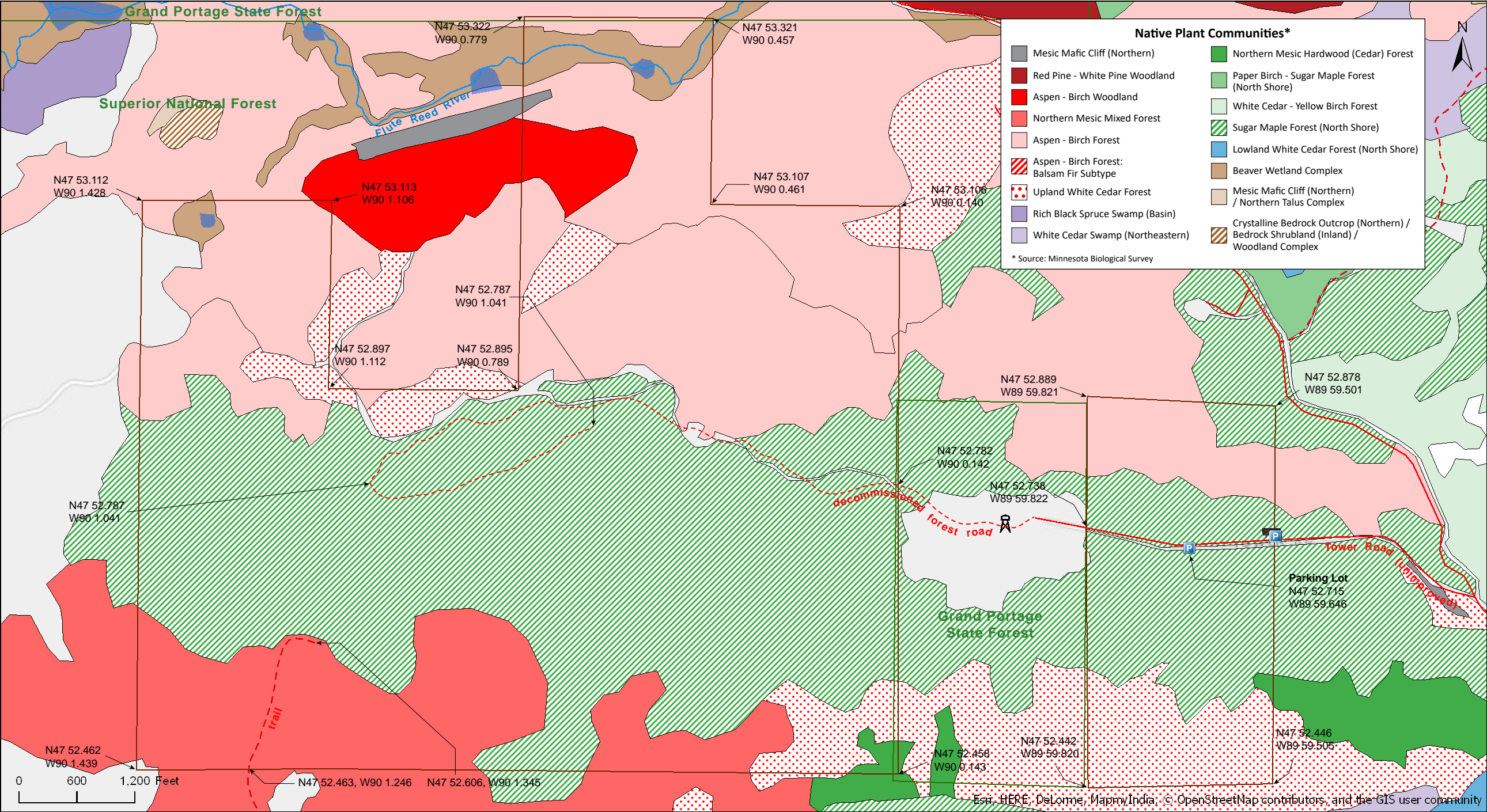
Spring Beauty Northern Hardwoods SNA

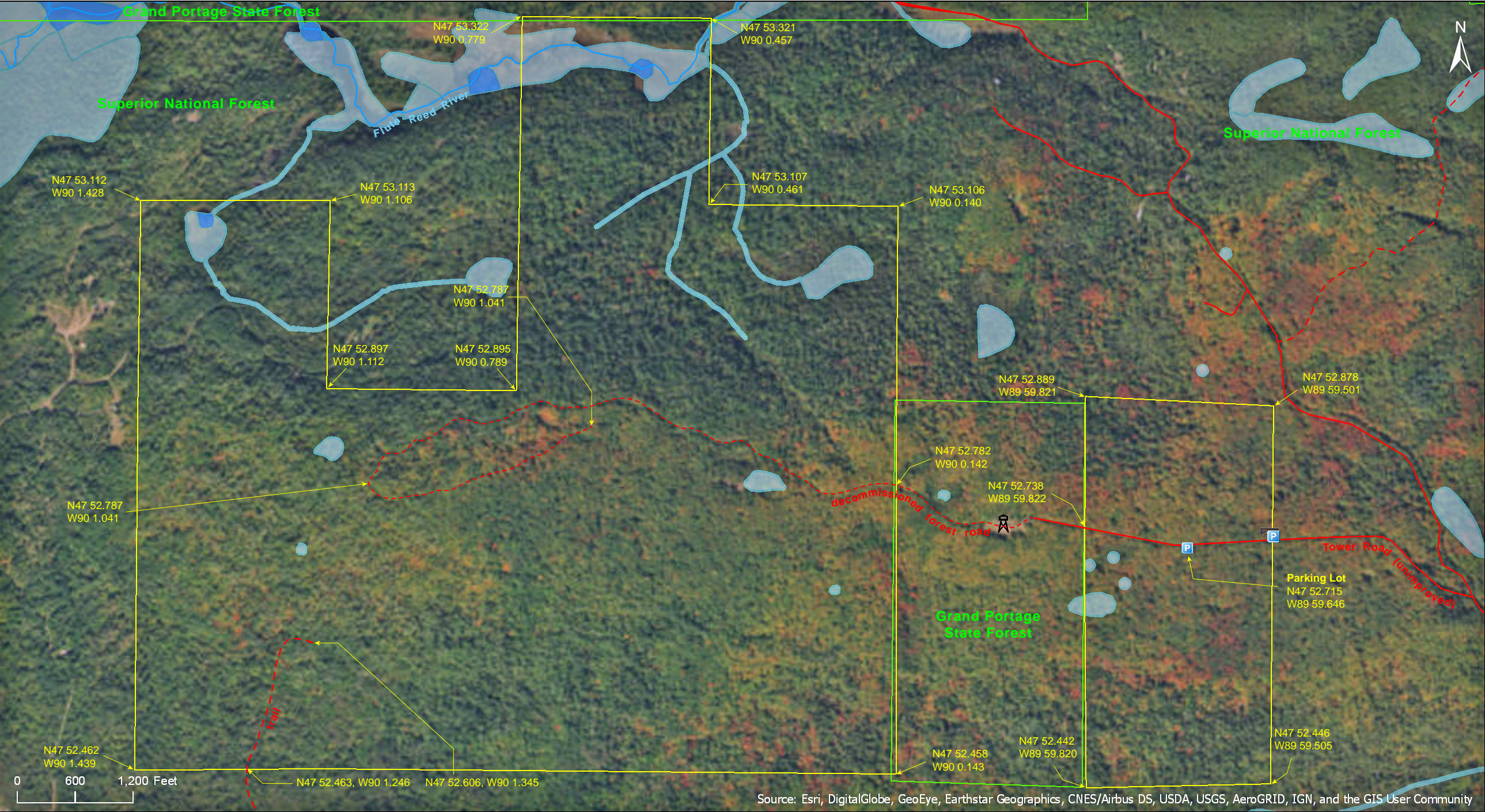
Cook County



Spring Beauty Northern Hardwoods SNA

Cook County





Source: Esri, DigitalGlobe, GeoEye, Earthstar Geographics, CNES/Airbus DS, USDA, USGS, AeroGRID, IGN, and the GIS User Community

Spring Beauty Northern Hardwoods SNA

Directions and Notes from Minnesota DNR

Directions: From Hovland 2.4 miles N Co Rd 16, then 1 mile W on Hovland Tower Rd, then 0.3 mile W (stay left) at Tom Lake Rd junction. Park at gate. Hike W to site.

Lat/Lon: 47.878673, -89.991654

This site has no maintained trails or other recreational facilities. This site is in an Audubon Important Bird Area. This site is within Grand Portage State Forest.

Notes from MinnesotaSeasons.com

The Approach

To get to the parking area for this SNA a four-wheel drive vehicle with high clearance is recommended.

Parking

N47 52.723, W89 59.648

A parking lot for this site is on the south side of Tower Road next to the gate. The directions on the Minnesota DNR Website to this parking area are correct. The map that accompanies those directions is not.

Trails

The forest road continues beyond the gate to the fire Hoveland Lookout Tower. Beyond that, a decommissioned forest road continues west. The old road is is not maintained in any way. It is overgrown, in some areas densely overgrown. In many spots it is blocked by deadfall. However, it makes few sharp turns, and if lost it can be easily reacquired. It appears to come to an end 1¼ miles past the tower after almost completely looping back on itself.

DISCLAIMER OF WARRANTIES AND LIMITATIONS OF LIABILITY

MinnesotaSeasons.com, The Nature Conservancy, U.S. Department of Agriculture, Forest Service, U.S. Fish and Wildlife Service, the state of Minnesota, the Minnesota Department of Natural Resources, and their employees, make no representations or warranties, express or implied, with respect to the use of or reliance on the data provided herewith, regardless of its format or means of transmission. There are no guarantees or representations to the user as to the accuracy, currency, completeness, suitability or reliability of this data for any purpose. THE USER ACCEPTS THE DATA AND/OR SOFTWARE "AS IS" AND ASSUMES ALL RISKS ASSOCIATED WITH ITS USE.

IN NO EVENT SHALL MINNESOTASEASONS.COM, TNC, USDA-FS, USFWS, OR MNDNR BE LIABLE FOR ANY DIRECT, INDIRECT, INCIDENTAL, SPECIAL, EXEMPLARY, OR CONSEQUENTIAL DAMAGES (INCLUDING, BUT NOT LIMITED TO, PROCUREMENT OF SUBSTITUTE GOODS OR SERVICES; LOSS OF USE, DATA, OR PROFITS; OR BUSINESS INTERRUPTION) HOWEVER CAUSED AND ON ANY THEORY OF LIABILITY, WHETHER IN CONTRACT, STRICT LIABILITY, OR TORT (INCLUDING NEGLIGENCE OR OTHERS) ARISING IN ANY WAY OUT OF THE USE OF THIS DATA, EVEN IF ADVISED OF THE POSSIBILITY OF SUCH DAMAGE OR FOR ANY CLAIM BY ANY OTHER PARTY.

Your use of the data is acceptance on your part of the terms and conditions set forth herein.