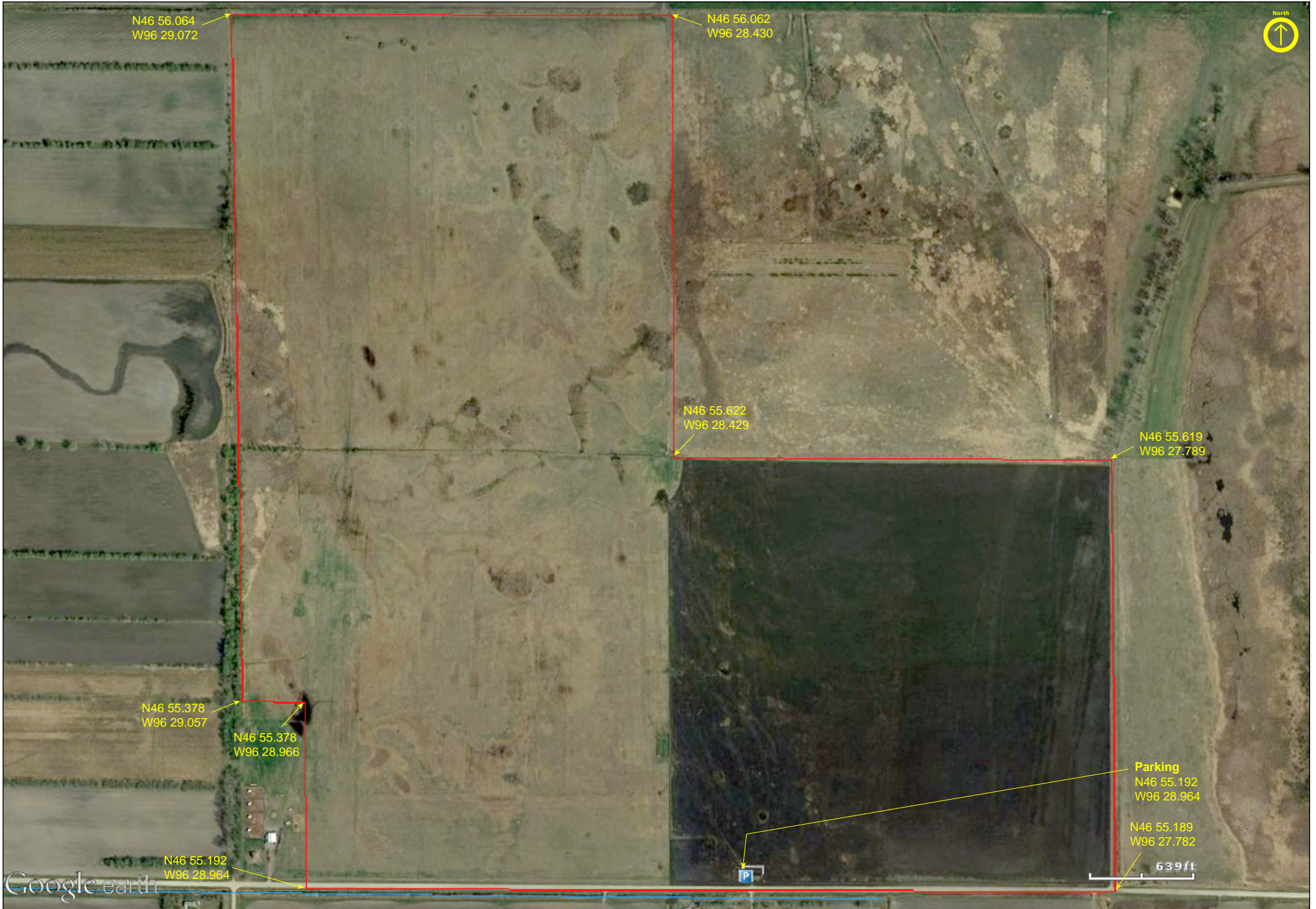


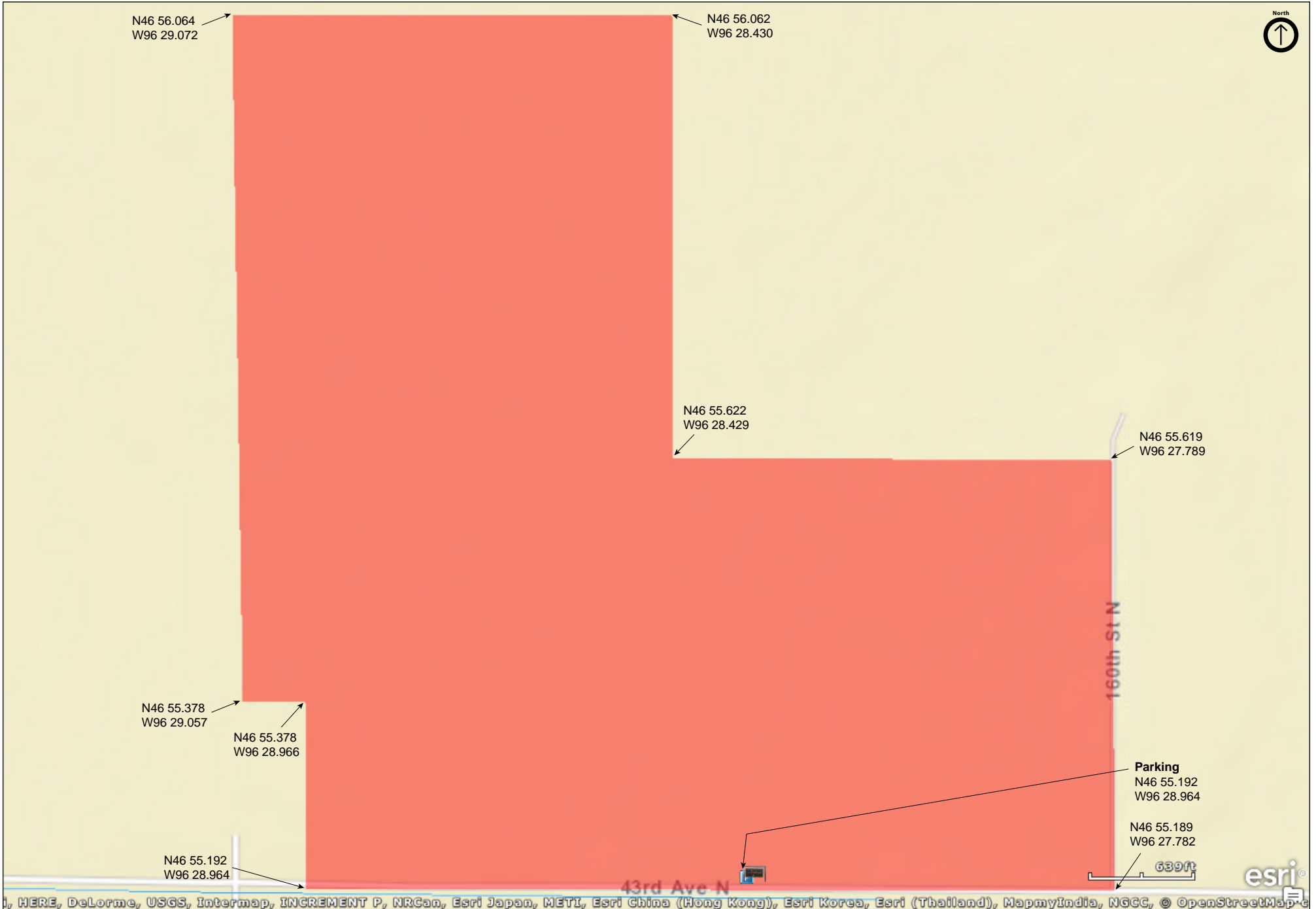
# Spring Prairie Preserve

Clay County



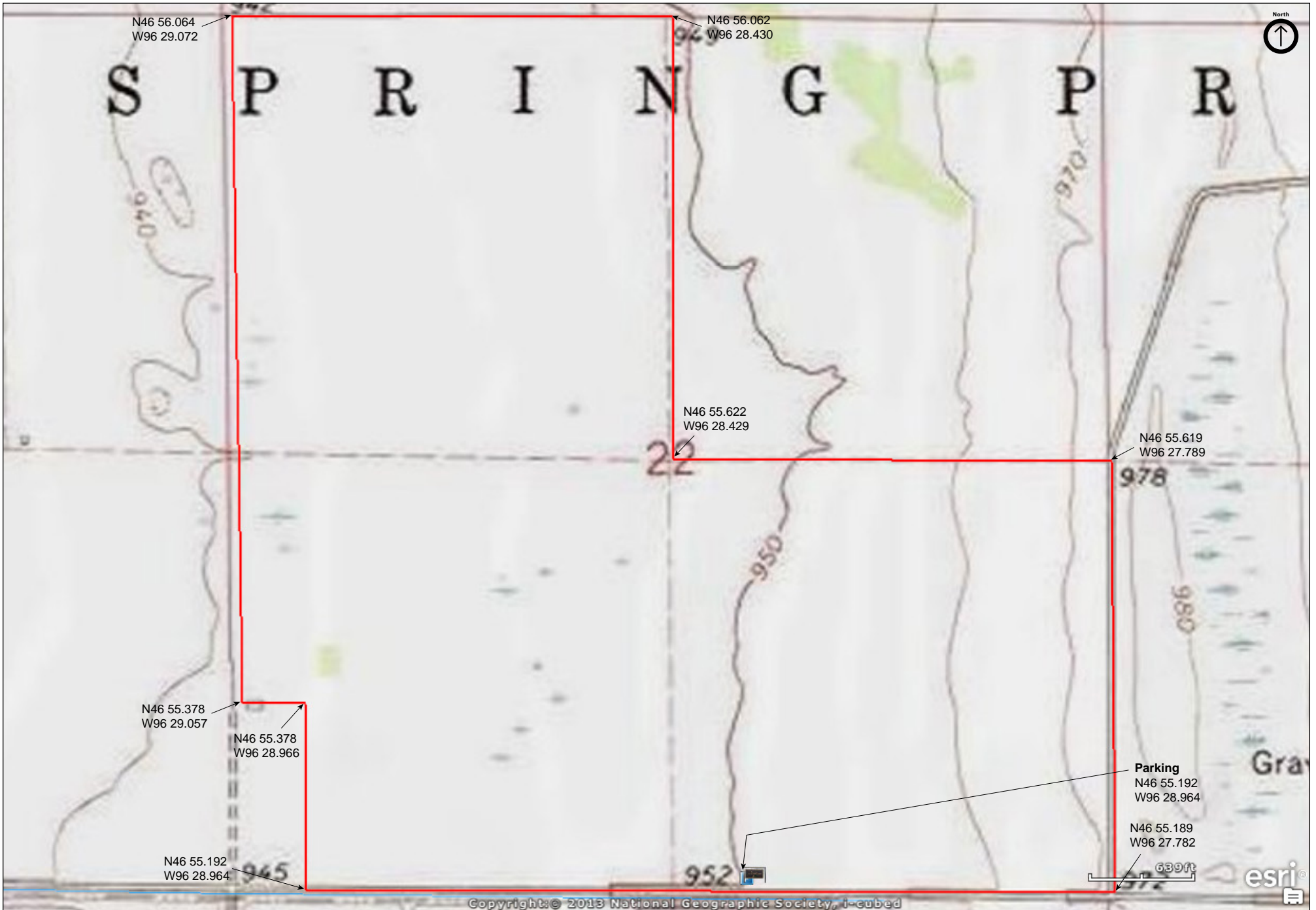
# Spring Prairie Preserve

Clay County



# Spring Prairie Preserve

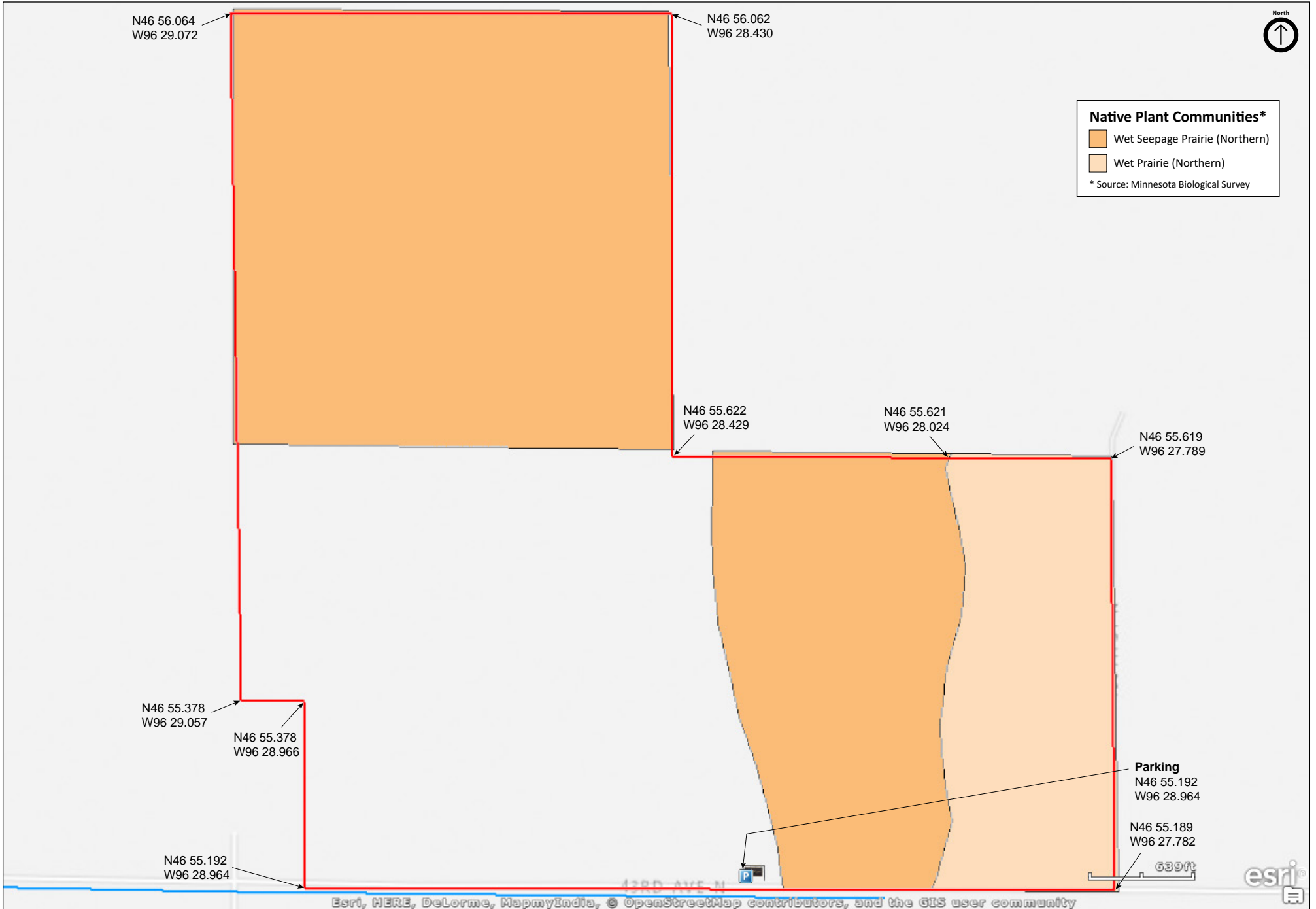
Clay County



Copyright: © 2013 National Geographic Society, i-cubed

# Spring Prairie Preserve

Clay County





# Spring Prairie Preserve

## **Directions and Notes from The Nature Conservancy**

From Hawley

Heading west on MN Hwy 10 from Hawley, MN: go 8 miles west from Hawley to MN Hwy 9.

From Moorhead

Heading east from Moorhead, MN: head 8 miles east from Moorhead to MN Hwy 9. From MN Hwy 10 take MN Hwy 9 north three miles to CR 86. Head east on CR 86 one mile to the SW corner of the Spring Prairie preserve.

## **Notes from MinnesotaSeasons.com**

### **Parking**

N46 55.203, W96 28.320

There is a parking lot for this preserve on the north side of County Road 86 (43rd Ave. N.).

## **DISCLAIMER OF WARRANTIES AND LIMITATIONS OF LIABILITY**

MinnesotaSeasons.com, The Nature Conservancy, U.S. Department of Agriculture, Forest Service, U.S. Fish and Wildlife Service, the state of Minnesota, the Minnesota Department of Natural Resources, and their employees, make no representations or warranties, express or implied, with respect to the use of or reliance on the data provided herewith, regardless of its format or means of transmission. There are no guarantees or representations to the user as to the accuracy, currency, completeness, suitability or reliability of this data for any purpose. THE USER ACCEPTS THE DATA AND/OR SOFTWARE "AS IS" AND ASSUMES ALL RISKS ASSOCIATED WITH ITS USE.

IN NO EVENT SHALL MINNESOTASEASONS.COM, TNC, USDA-FS, USFWS, OR MNDNR BE LIABLE FOR ANY DIRECT, INDIRECT, INCIDENTAL, SPECIAL, EXEMPLARY, OR CONSEQUENTIAL DAMAGES (INCLUDING, BUT NOT LIMITED TO, PROCUREMENT OF SUBSTITUTE GOODS OR SERVICES; LOSS OF USE, DATA, OR PROFITS; OR BUSINESS INTERRUPTION) HOWEVER CAUSED AND ON ANY THEORY OF LIABILITY, WHETHER IN CONTRACT, STRICT LIABILITY, OR TORT (INCLUDING NEGLIGENCE OR OTHERS) ARISING IN ANY WAY OUT OF THE USE OF THIS DATA, EVEN IF ADVISED OF THE POSSIBILITY OF SUCH DAMAGE OR FOR ANY CLAIM BY ANY OTHER PARTY.

Your use of the data is acceptance on your part of the terms and conditions set forth herein.