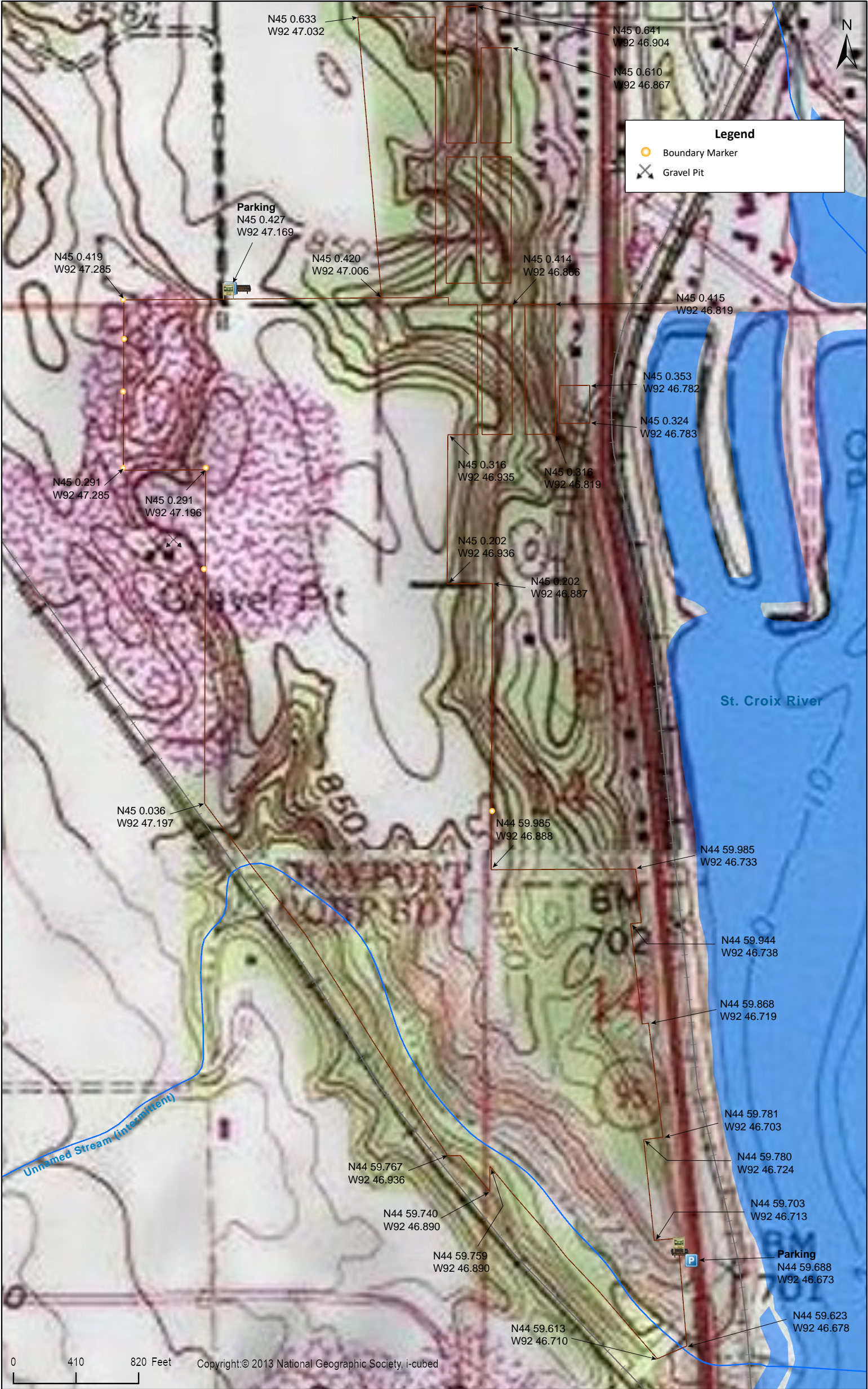


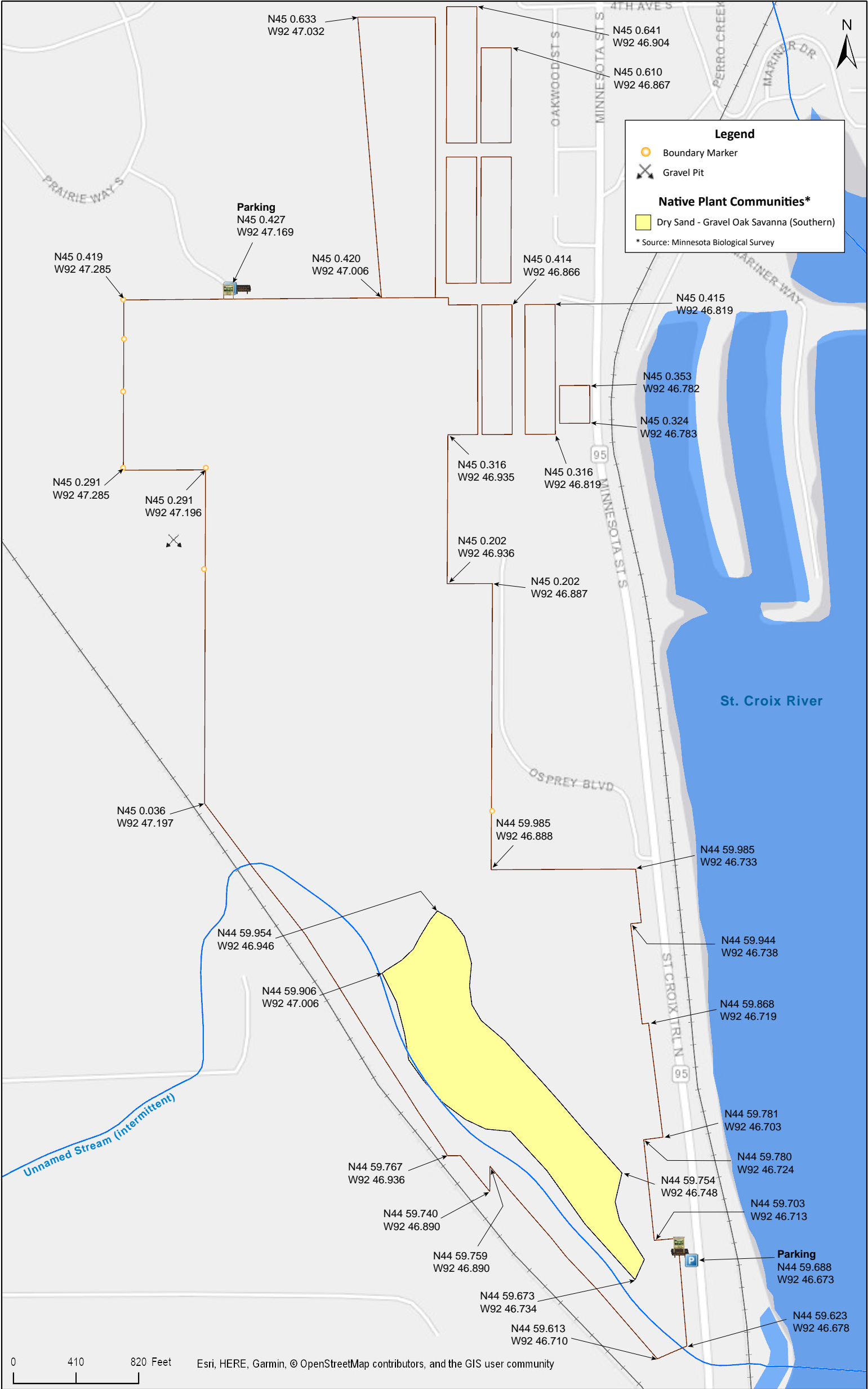


St. Croix Savanna SNA

Washington County









St. Croix Savanna SNA

Directions and Notes from Minnesota DNR

Directions

From Bayport about 0.5 mile S on MN Hwy 95. Park on W road shoulder near guard rail.

Lat/Lon

44.994795, -92.777881

Directions

From Bayport, 0.7 mile W on Co Hwy 14, then 0.8 mile S on Co Hwy 21, then 0.25 mile E on Inspiration Pkwy, then 0.25 mile SE on Prairie Way, then about 0.15 mile E and S to dead end. Park at gate.

Lat/Lon

45.007117, -92.786157

Note

A northern and southern access are available, the later requiring a somewhat steep climb up the face of the bluff. Parking at the northern access is recommended, since there is no dedicated parking at the southern access along busy Highway 95.

This site has no maintained trails or other recreational facilities.

Notes from MinnesotaSeasons.com

Parking

There are two designated parking locations for this SNA. The first is a hard-packed area at the end of Prairie Way S. near the northwest boundary (north parking).

North Parking (Prairie Way S.)

N45 0.427, W92 47.169

The second parking spot is the shoulder of MN Hwy 95 near the southeast boundary (south parking). MN Hwy 95 is a busy highway. The guard rail that had prevented vehicles from pulling off of the pavement has been removed. Nevertheless, parking on MN Hwy 95 is not recommended.

South Parking (paved shoulder of MN Hwy. 95)

N44 59.688, W92 46.673

Hiking Trails

There is an access road, basically two worn tire tracks in the grass, that leads from the north parking area, around the prairie reconstruction (see the Detail map [MN DNR] above), and through the oak woodlands, to the bluff near the southeast corner of the SNA. In June 2020 this road appeared to have been mowed (see photos below). The “road” skirts the west side of the prairie reconstruction, and a well-worn footpath skirts the east side, providing a loop around this part of the SNA.

DISCLAIMER OF WARRANTIES AND LIMITATIONS OF LIABILITY

MinnesotaSeasons.com, The Nature Conservancy, U.S. Department of Agriculture, Forest Service, U.S. Fish and Wildlife Service, the state of Minnesota, the Minnesota Department of Natural Resources, and their employees, make no representations or warranties, express or implied, with respect to the use of or reliance on the data provided herewith, regardless of its format or means of transmission. There are no guarantees or representations to the user as to the accuracy, currency, completeness, suitability or reliability of this data for any purpose. THE USER ACCEPTS THE DATA AND/OR SOFTWARE "AS IS" AND ASSUMES ALL RISKS ASSOCIATED WITH ITS USE.

IN NO EVENT SHALL MINNESOTASEASONS.COM, TNC, USDA-FS, USFWS, OR MNDNR BE LIABLE FOR ANY DIRECT, INDIRECT, INCIDENTAL, SPECIAL, EXEMPLARY, OR CONSEQUENTIAL DAMAGES (INCLUDING, BUT NOT LIMITED TO, PROCUREMENT OF SUBSTITUTE GOODS OR SERVICES; LOSS OF USE, DATA, OR PROFITS; OR BUSINESS INTERRUPTION) HOWEVER CAUSED AND ON ANY THEORY OF LIABILITY, WHETHER IN CONTRACT, STRICT LIABILITY, OR TORT (INCLUDING NEGLIGENCE OR OTHERS) ARISING IN ANY WAY OUT OF THE USE OF THIS DATA, EVEN IF ADVISED OF THE POSSIBILITY OF SUCH DAMAGE OR FOR ANY CLAIM BY ANY OTHER PARTY.

Your use of the data is acceptance on your part of the terms and conditions set forth herein.