

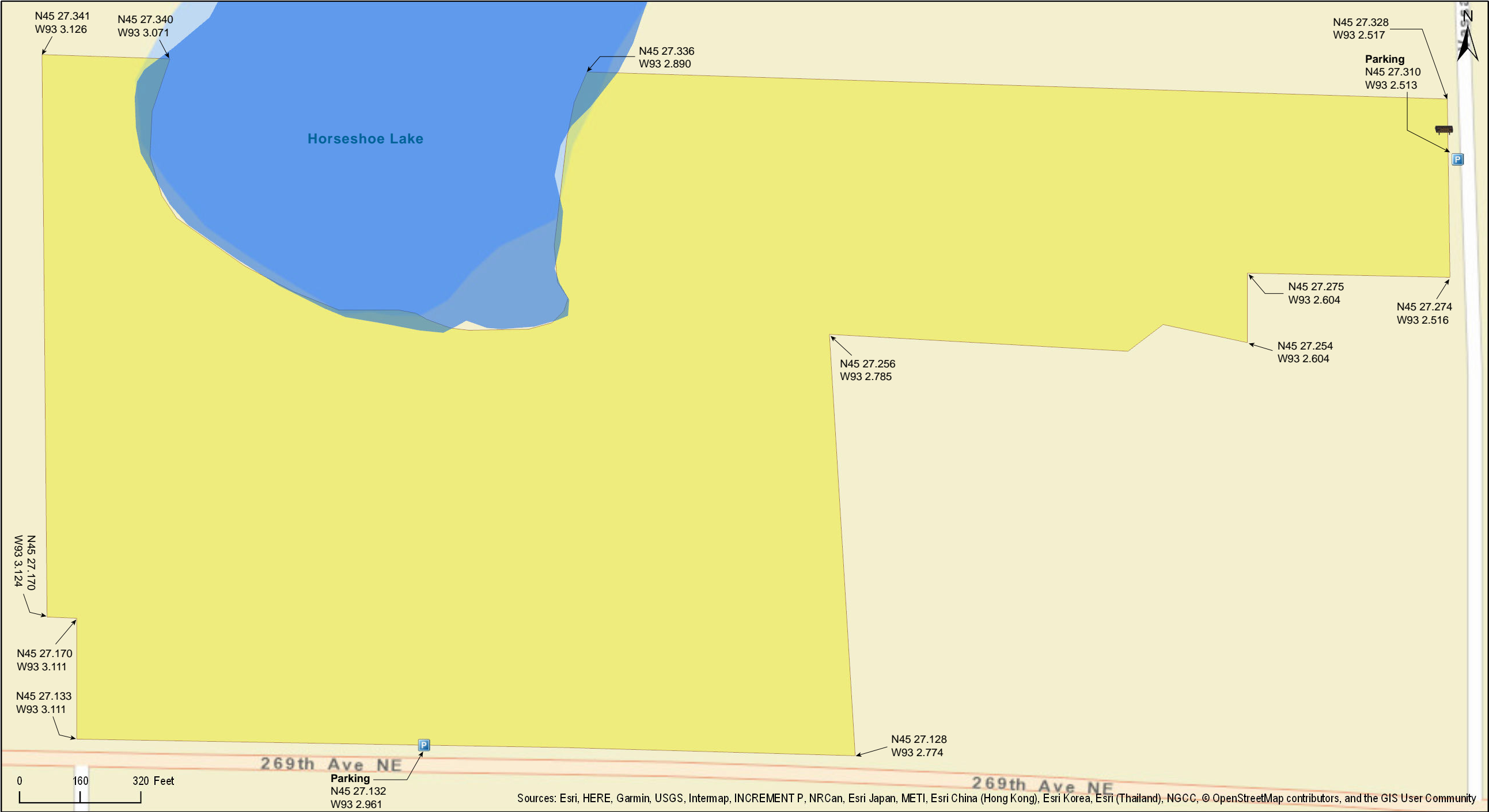
Twin Lakes SNA

Isanti County



Twin Lakes SNA

Isanti County



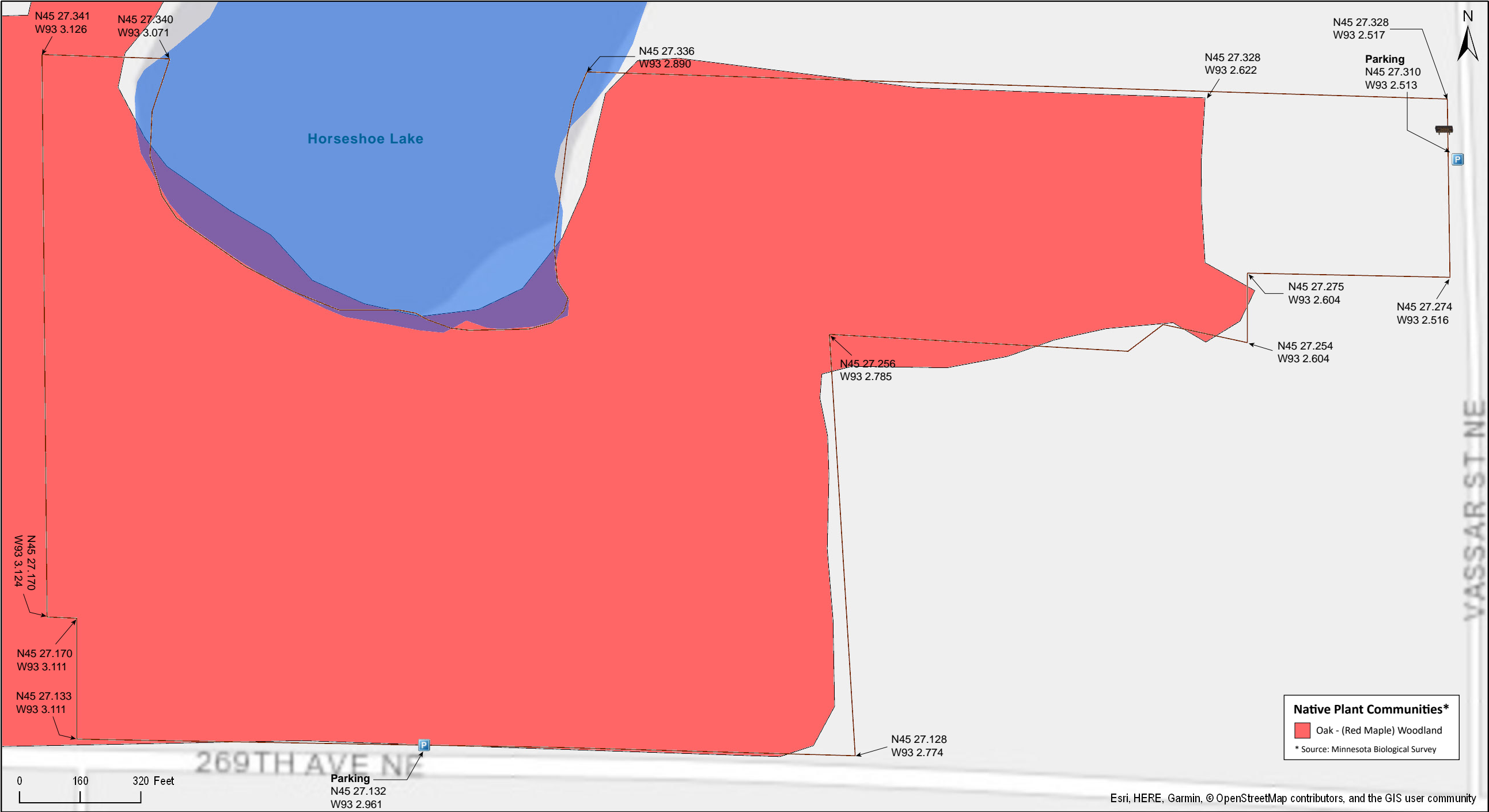
Twin Lakes SNA

Isanti County



Twin Lakes SNA

Isanti County





Twin Lakes SNA

Directions and Notes from Minnesota DNR

Directions: From Stacy 3.75 miles N on I-35, then 2.75 miles W on Co Rd 17 (becomes Co Rd 9). Park on N road shoulder.

Lat/Lon: 45.452191, -93.04934

This site has no maintained trails or other recreational facilities.

Notes from MinnesotaSeasons.com

Parking

County Road 9 (not recommended)
N45 27.132, W93 2.961

Vassar St NE (recommended)
N45 27.310, W93 2.513

The Minnesota DNR recommends parking on the north shoulder of County Road 9. That is a busy road and there is little room to pull completely off the pavement before the shoulder drops off into a ditch. Do not park at the field approach on County Road 9—that is private property. MinnesotaSeasons.com recommends parking on the West shoulder of Vassar St. NE near the site’s wood routed sign. There is little traffic and there is plenty of room for several vehicles to pull completely off the road.

Hiking Trails

There are no hiking trails. There is an old forest road, now barely visible on the ground, that follows at a short distance the south and west shore of Horseshoe Lake.

DISCLAIMER OF WARRANTIES AND LIMITATIONS OF LIABILITY

MinnesotaSeasons.com, The Nature Conservancy, U.S. Department of Agriculture, Forest Service, U.S. Fish and Wildlife Service, the state of Minnesota, the Minnesota Department of Natural Resources, and their employees, make no representations or warranties, express or implied, with respect to the use of or reliance on the data provided herewith, regardless of its format or means of transmission. There are no guarantees or representations to the user as to the accuracy, currency, completeness, suitability or reliability of this data for any purpose. THE USER ACCEPTS THE DATA AND/OR SOFTWARE "AS IS" AND ASSUMES ALL RISKS ASSOCIATED WITH ITS USE.

IN NO EVENT SHALL MINNESOTASEASONS.COM, TNC, USDA-FS, USFWS, OR MNDNR BE LIABLE FOR ANY DIRECT, INDIRECT, INCIDENTAL, SPECIAL, EXEMPLARY, OR CONSEQUENTIAL DAMAGES (INCLUDING, BUT NOT LIMITED TO, PROCUREMENT OF SUBSTITUTE GOODS OR SERVICES; LOSS OF USE, DATA, OR PROFITS; OR BUSINESS INTERRUPTION) HOWEVER CAUSED AND ON ANY THEORY OF LIABILITY, WHETHER IN CONTRACT, STRICT LIABILITY, OR TORT (INCLUDING NEGLIGENCE OR OTHERS) ARISING IN ANY WAY OUT OF THE USE OF THIS DATA, EVEN IF ADVISED OF THE POSSIBILITY OF SUCH DAMAGE OR FOR ANY CLAIM BY ANY OTHER PARTY.

Your use of the data is acceptance on your part of the terms and conditions set forth herein.