

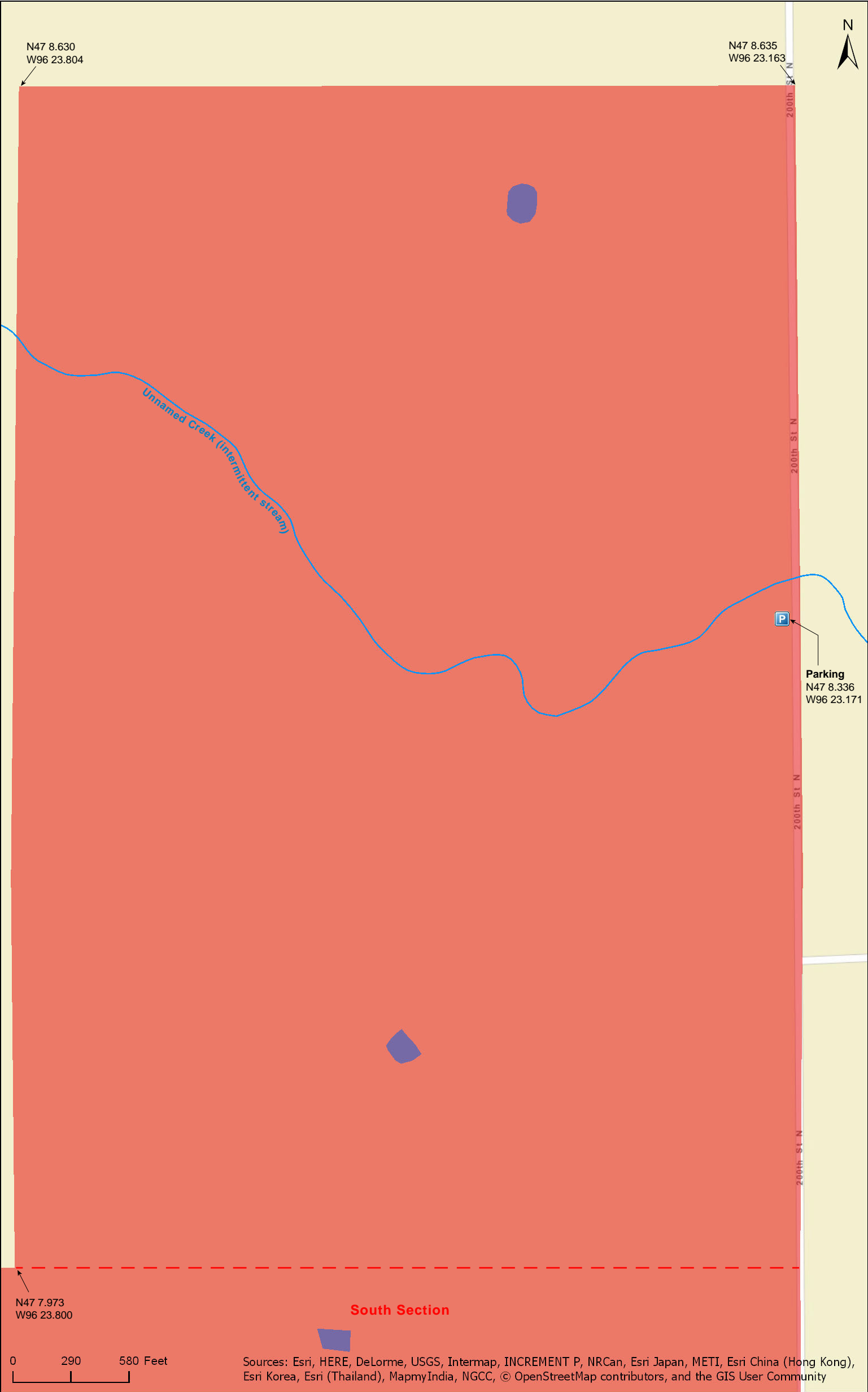
Twin Valley Prairie Addition  
North Section

Clay County



Twin Valley Prairie Addition  
North Section

Clay County





Twin Valley Prairie Addition  
North Section

Clay County



Twin Valley Prairie Addition  
North Section

Clay County

**Native Plant Communities\***

Mesic Prairie (Northern)

\* Source: Minnesota Biological Survey



N47 8.630  
W96 23.804

N47 8.635  
W96 23.163

Unnamed Creek (intermittent stream)

200TH ST N

200TH ST N

200TH ST N



**Parking**  
N47 8.336  
W96 23.171

**South Section**

N47 7.973  
W96 23.800

0 290 580 Feet

Esri, HERE, DeLorme, MapmyIndia, © OpenStreetMap contributors, and the GIS user community



Twin Valley Prairie Addition  
North Section

National Wetlands Inventory

Clay County



# Twin Valley Prairie Addition North Section

## **Directions and Notes from The Nature Conservancy**

**Location:** SE 1/4 of Section 4, and the NE 1/4, and the S 1/2 of the NW 1/4 of Section 9, Hagen Township, Clay County; 96°23'10"W 47°8'20"N (47.138931 -96.386183)

## **Notes from MinnesotaSeasons.com**

### **Parking**

N47 8.336, W96 23.171

## **DISCLAIMER OF WARRANTIES AND LIMITATIONS OF LIABILITY**

MinnesotaSeasons.com, The Nature Conservancy, U.S. Department of Agriculture, Forest Service, U.S. Fish and Wildlife Service, the state of Minnesota, the Minnesota Department of Natural Resources, and their employees, make no representations or warranties, express or implied, with respect to the use of or reliance on the data provided herewith, regardless of its format or means of transmission. There are no guarantees or representations to the user as to the accuracy, currency, completeness, suitability or reliability of this data for any purpose. THE USER ACCEPTS THE DATA AND/OR SOFTWARE "AS IS" AND ASSUMES ALL RISKS ASSOCIATED WITH ITS USE.

IN NO EVENT SHALL MINNESOTASEASONS.COM, TNC, USDA-FS, USFWS, OR MNDNR BE LIABLE FOR ANY DIRECT, INDIRECT, INCIDENTAL, SPECIAL, EXEMPLARY, OR CONSEQUENTIAL DAMAGES (INCLUDING, BUT NOT LIMITED TO, PROCUREMENT OF SUBSTITUTE GOODS OR SERVICES; LOSS OF USE, DATA, OR PROFITS; OR BUSINESS INTERRUPTION) HOWEVER CAUSED AND ON ANY THEORY OF LIABILITY, WHETHER IN CONTRACT, STRICT LIABILITY, OR TORT (INCLUDING NEGLIGENCE OR OTHERS) ARISING IN ANY WAY OUT OF THE USE OF THIS DATA, EVEN IF ADVISED OF THE POSSIBILITY OF SUCH DAMAGE OR FOR ANY CLAIM BY ANY OTHER PARTY.

Your use of the data is acceptance on your part of the terms and conditions set forth herein.