

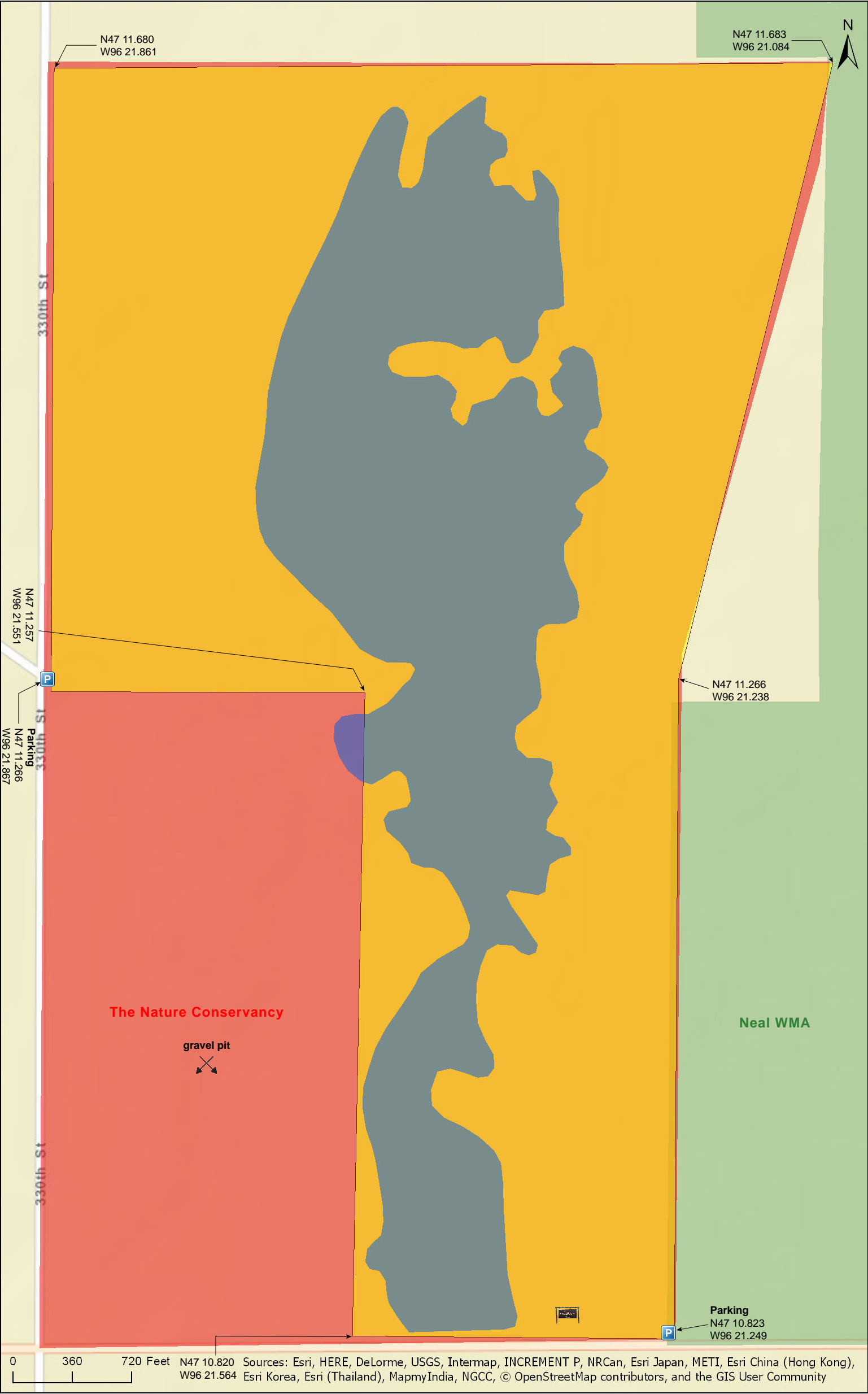
Twin Valley Prairie SNA

Norman County



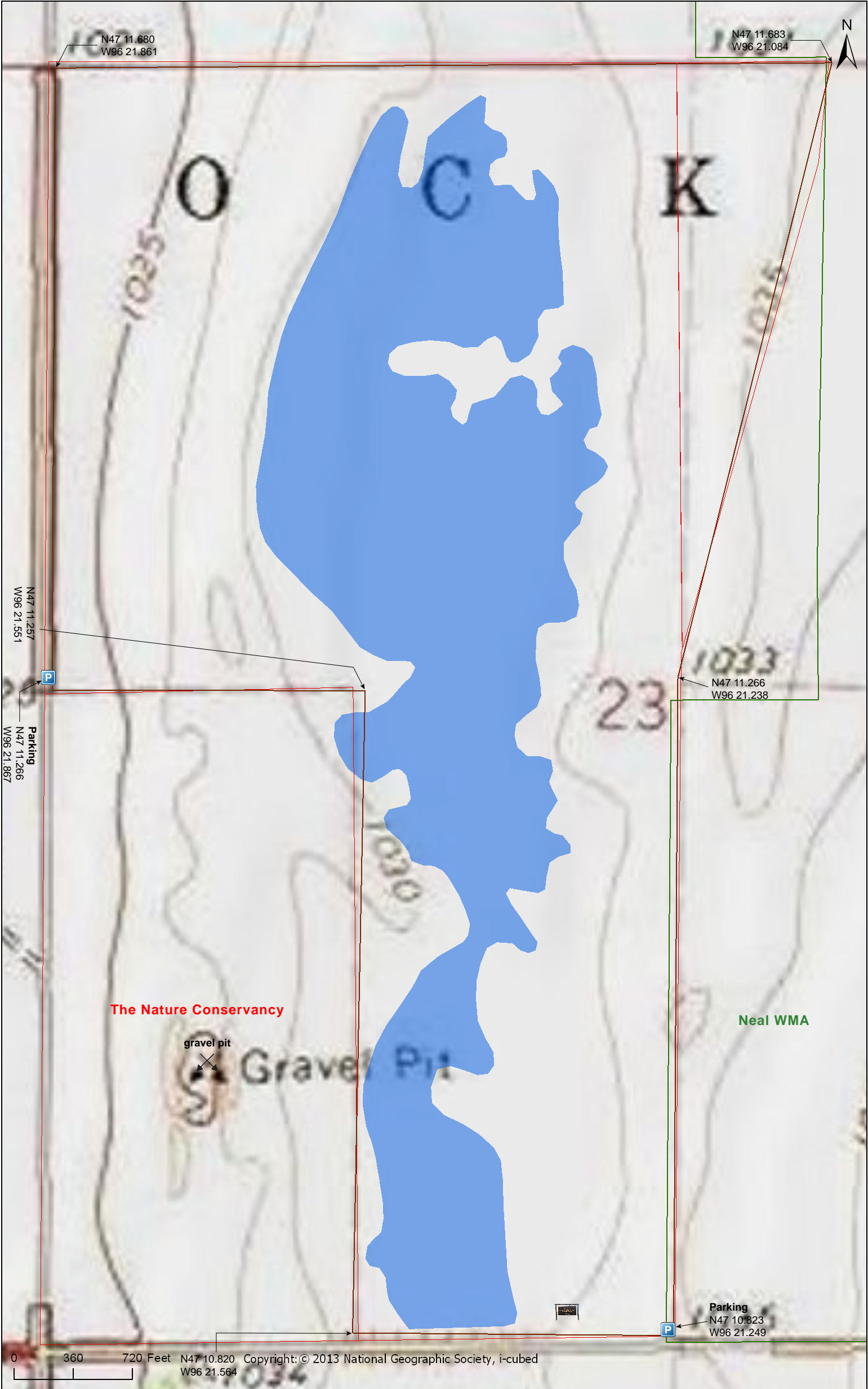
Twin Valley Prairie SNA

Norman County



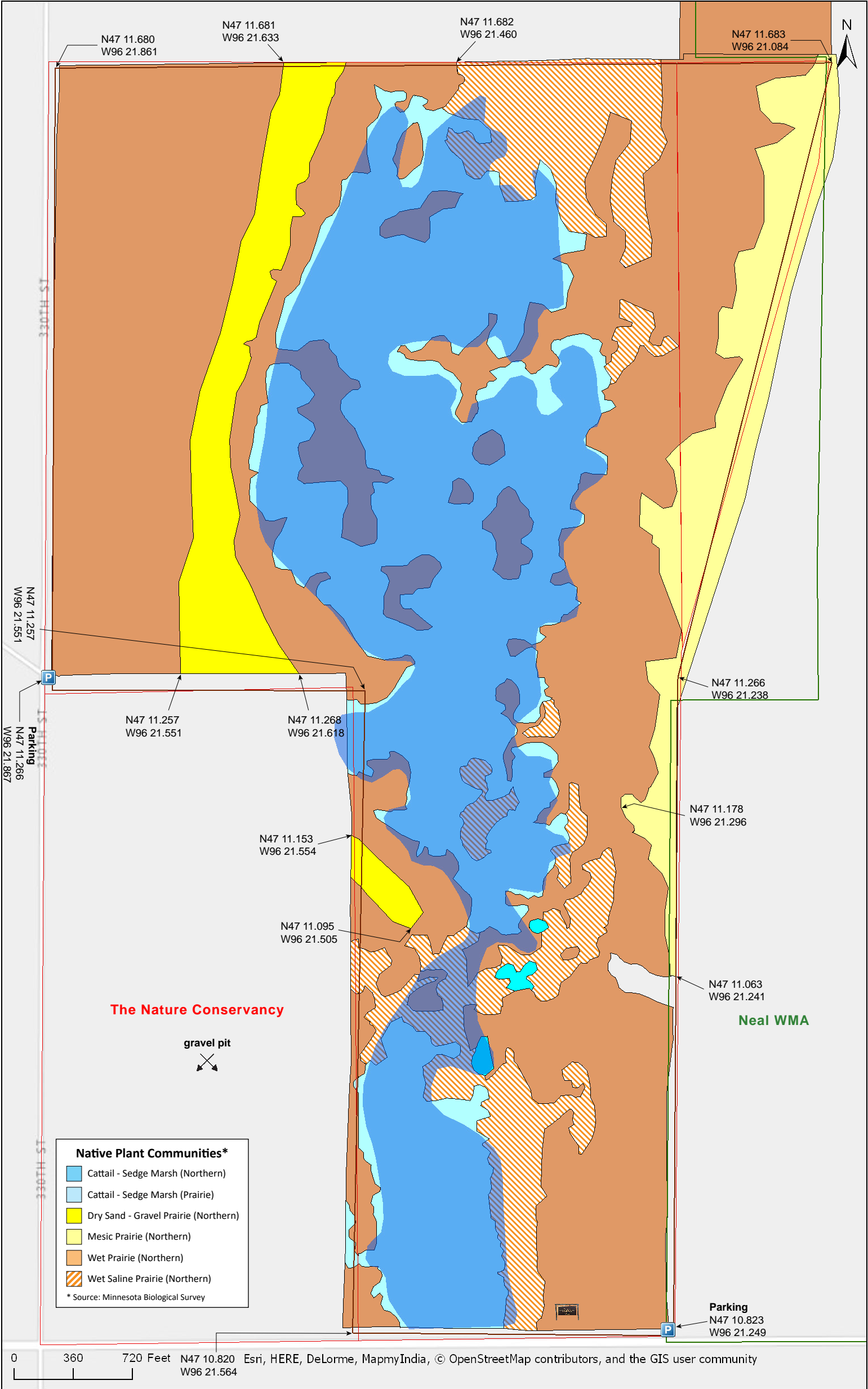
Twin Valley Prairie SNA

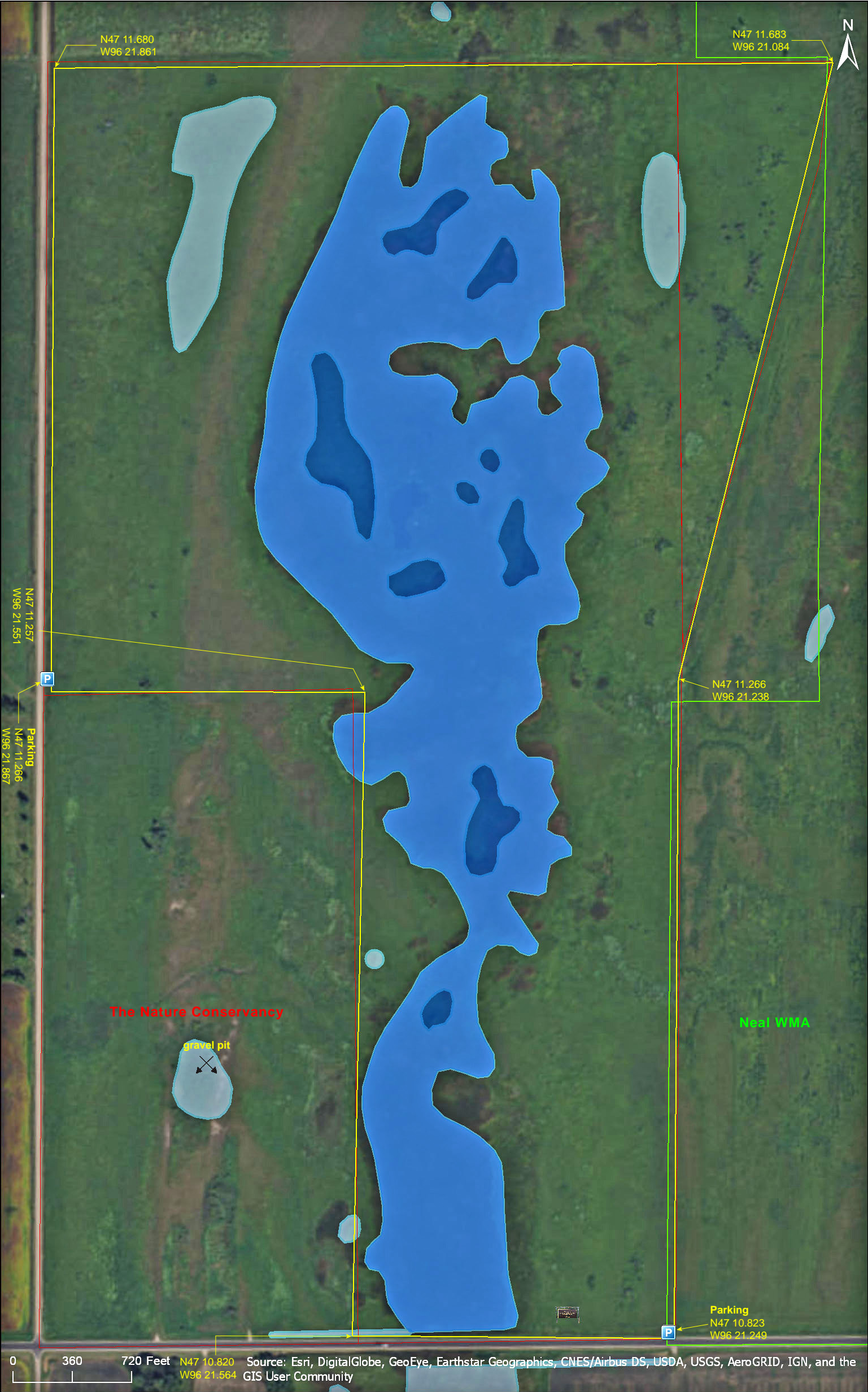
Norman County



Twin Valley Prairie SNA

Norman County





Twin Valley Prairie SNA

Directions and Notes from Minnesota DNR

Directions: From Twin Valley 5 miles S on MN Hwy 32, then 4.5 miles W on Co Hwy 39, then 0.5 mile N on Co Rd 28. Park in pull-off on E.

Lat/Lon: 47.187761, -96.364468

This site has no maintained trails or other recreational facilities. This site is in an Audubon Important Bird Area. Neal WMA is adjacent to this site.

This site is owned by The Nature Conservancy.

Directions and Notes from The Nature Conservancy

From Twin Valley, take State Highway 32 about five miles south to the intersection with county roads 39 and 113. Turn west and travel four-and-a-half miles. The preserve is on the north side of the highway and is marked with The Nature Conservancy signs.

Over the last five years, the Conservancy has reclaimed a former gravel pit, reseeded a portion of the preserve that was formerly farmed to native prairie species and removed numerous mature trees.

Notes from MinnesotaSeasons.com

Parking

West Parking (County Road 28)
N47 11.266, W96 21.867

South Parking (County Road 39)
N47 10.823, W96 21.249

This SNA is part of the larger The Nature Conservancy preserve, which goes by the same name. It is bordered on the east by Neal WMA.

DISCLAIMER OF WARRANTIES AND LIMITATIONS OF LIABILITY

MinnesotaSeasons.com, The Nature Conservancy, U.S. Department of Agriculture, Forest Service, U.S. Fish and Wildlife Service, the state of Minnesota, the Minnesota Department of Natural Resources, and their employees, make no representations or warranties, express or implied, with respect to the use of or reliance on the data provided herewith, regardless of its format or means of transmission. There are no guarantees or representations to the user as to the accuracy, currency, completeness, suitability or reliability of this data for any purpose. THE USER ACCEPTS THE DATA AND/OR SOFTWARE "AS IS" AND ASSUMES ALL RISKS ASSOCIATED WITH ITS USE.

IN NO EVENT SHALL MINNESOTASEASONS.COM, TNC, USDA-FS, USFWS, OR MNDNR BE LIABLE FOR ANY DIRECT, INDIRECT, INCIDENTAL, SPECIAL, EXEMPLARY, OR CONSEQUENTIAL DAMAGES (INCLUDING, BUT NOT LIMITED TO, PROCUREMENT OF SUBSTITUTE GOODS OR SERVICES; LOSS OF USE, DATA, OR PROFITS; OR BUSINESS INTERRUPTION) HOWEVER CAUSED AND ON ANY THEORY OF LIABILITY, WHETHER IN CONTRACT, STRICT LIABILITY, OR TORT (INCLUDING NEGLIGENCE OR OTHERS) ARISING IN ANY WAY OUT OF THE USE OF THIS DATA, EVEN IF ADVISED OF THE POSSIBILITY OF SUCH DAMAGE OR FOR ANY CLAIM BY ANY OTHER PARTY.

Your use of the data is acceptance on your part of the terms and conditions set forth herein.