

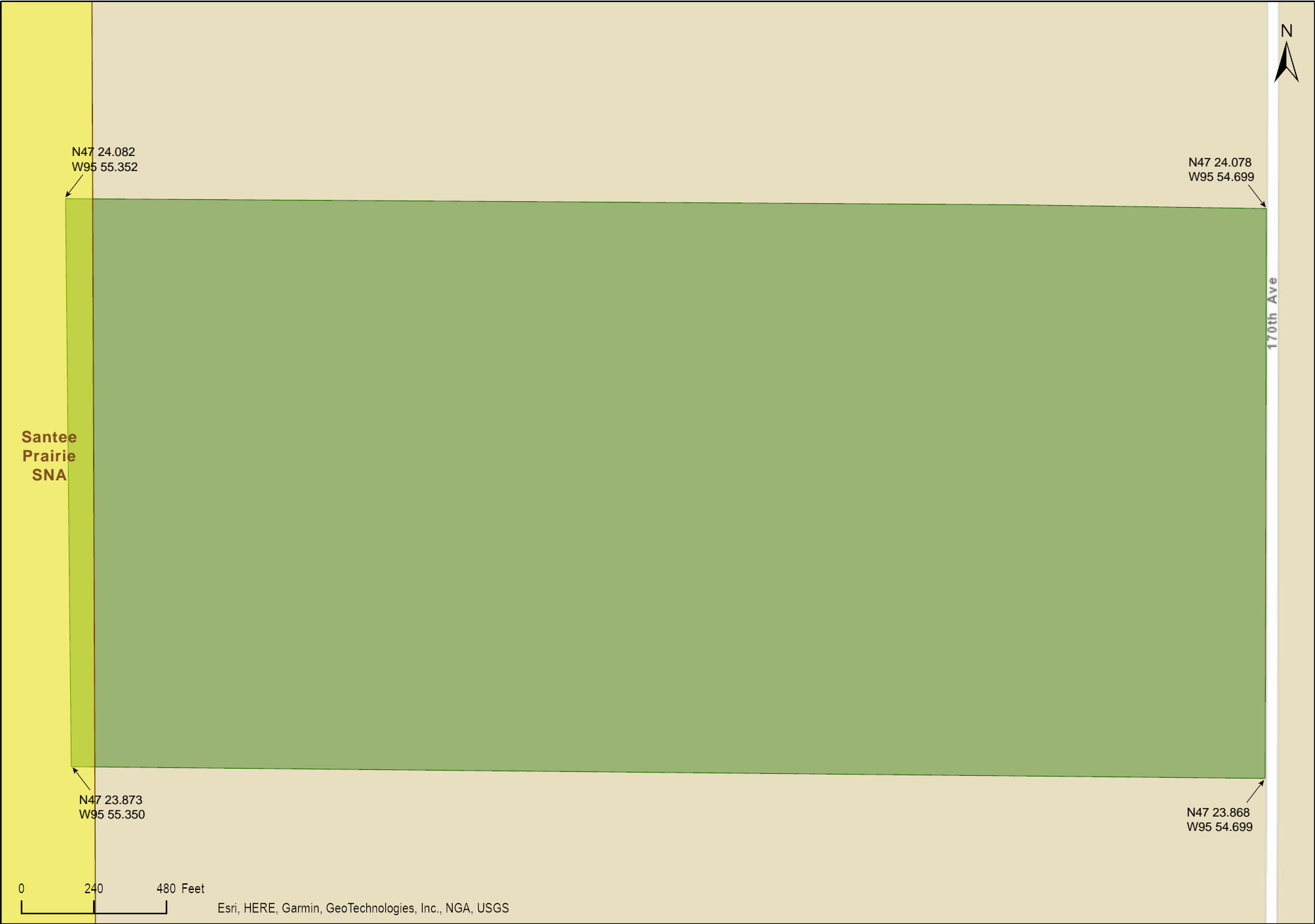
Wambach WMA
East Unit

Mahnomen County



Wambach WMA
East Unit

Mahnomen County



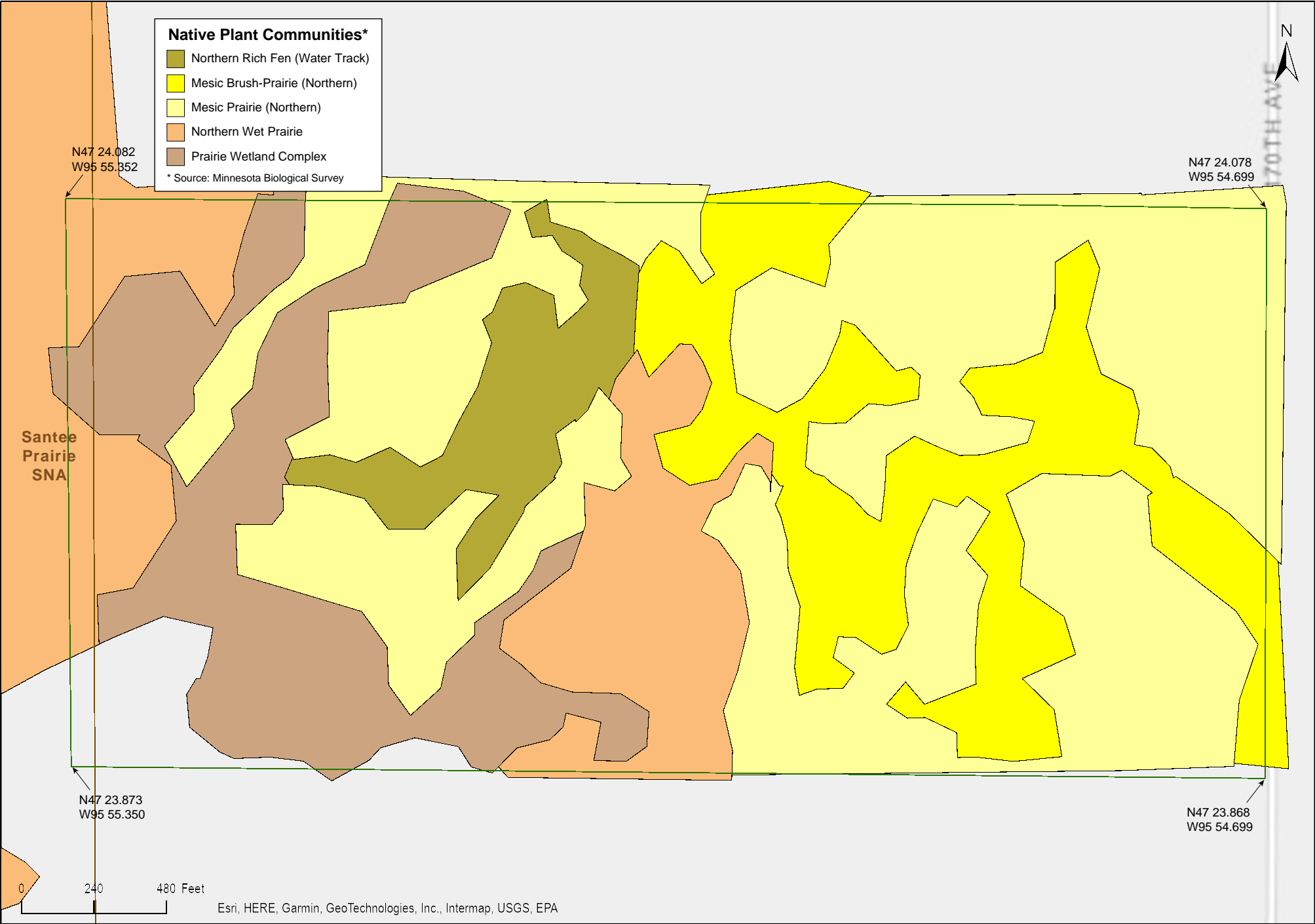
Wambach WMA
East Unit

Mahnomen County



Wambach WMA
East Unit

Mahnomen County



Wambach WMA East Unit



Wambach WMA
East Unit

Mahnomen County

Landcover

Landcover

1

Mesic prairie

2

Mixed emergent marsh

3

Aspen forest

4

Wet brush-prairie

5

Cultivated herbaceous vegetation



Wambach WMA East Unit

Directions and Notes from Minnesota DNR

From Mahanomen, go 5 miles N on US 59 then 1 1/2 miles E on TWP RD.

Notes from MinnesotaSeasons.com

There is a gate near the intersection of Township Road 184 (170th St.) and Township Road 45 (150th Ave.) that blocks access to the DNR public road and the WMA parking lot. On visits in August and September of 2011 the gate was locked. On visits in August 2013 and August 2016 the gate was unlocked. If the gate is locked, park on the south side of the DNR road near the gate, being careful to avoid blocking the gate.

Parking

To access the East Unit park on the west shoulder of 170th Ave. (Township Road 37).

Gate

N47 23.882, W95 57.287

Parking Lots

N47 23.881, W95 56.569

N47 23.516, W95 56.383

DISCLAIMER OF WARRANTIES AND LIMITATIONS OF LIABILITY

MinnesotaSeasons.com, The Nature Conservancy, U.S. Department of Agriculture, Forest Service, U.S. Fish and Wildlife Service, the state of Minnesota, the Minnesota Department of Natural Resources, and their employees, make no representations or warranties, express or implied, with respect to the use of or reliance on the data provided herewith, regardless of its format or means of transmission. There are no guarantees or representations to the user as to the accuracy, currency, completeness, suitability or reliability of this data for any purpose. THE USER ACCEPTS THE DATA AND/OR SOFTWARE "AS IS" AND ASSUMES ALL RISKS ASSOCIATED WITH ITS USE.

IN NO EVENT SHALL MINNESOTASEASONS.COM, TNC, USDA-FS, USFWS, OR MNDNR BE LIABLE FOR ANY DIRECT, INDIRECT, INCIDENTAL, SPECIAL, EXEMPLARY, OR CONSEQUENTIAL DAMAGES (INCLUDING, BUT NOT LIMITED TO, PROCUREMENT OF SUBSTITUTE GOODS OR SERVICES; LOSS OF USE, DATA, OR PROFITS; OR BUSINESS INTERRUPTION) HOWEVER CAUSED AND ON ANY THEORY OF LIABILITY, WHETHER IN CONTRACT, STRICT LIABILITY, OR TORT (INCLUDING NEGLIGENCE OR OTHERWISE) ARISING IN ANY WAY OUT OF THE USE OF THIS DATA, EVEN IF ADVISED OF THE POSSIBILITY OF SUCH DAMAGE OR FOR ANY CLAIM BY ANY OTHER PARTY.

Your use of the data is acceptance on your part of the terms and conditions set forth herein.