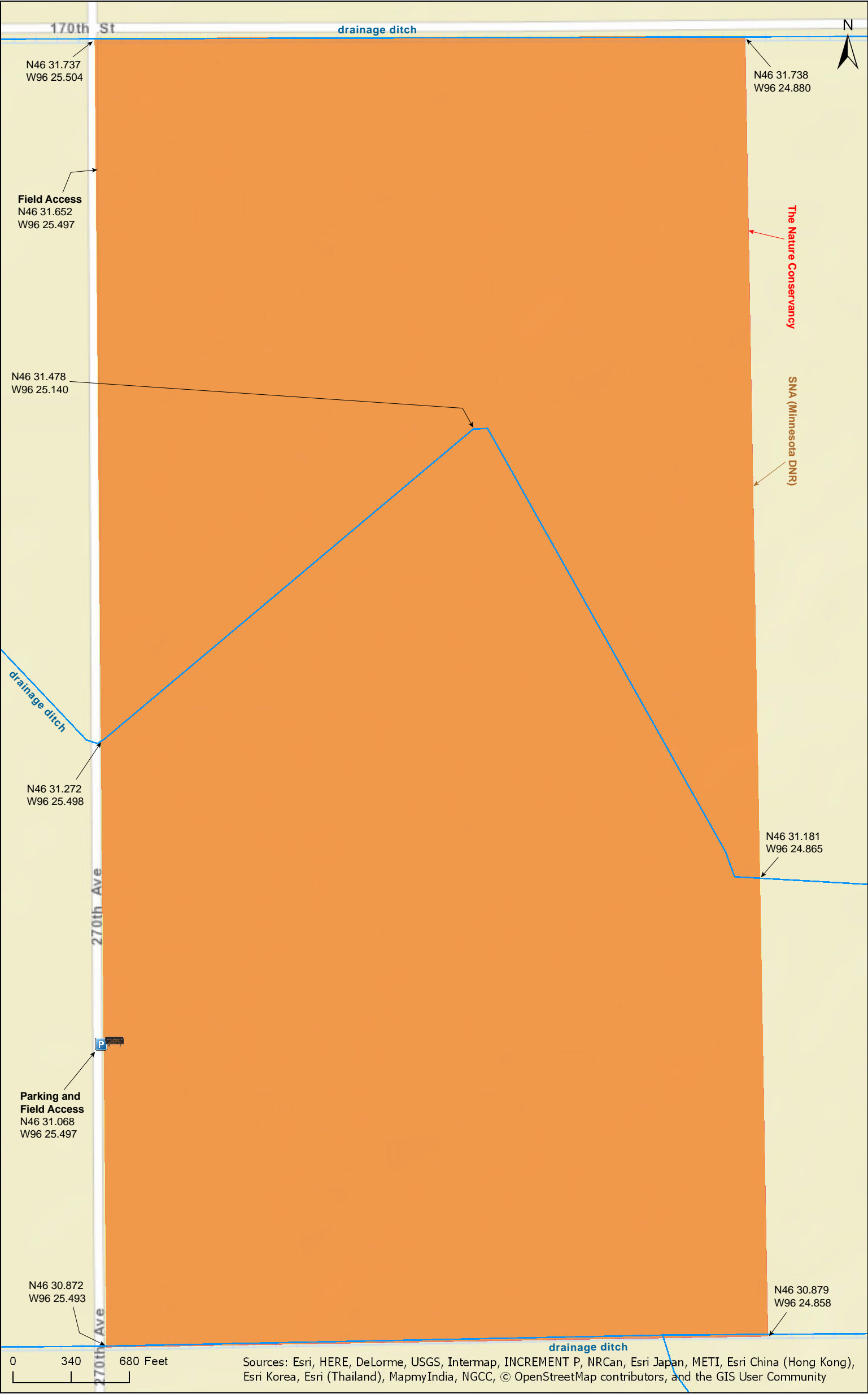
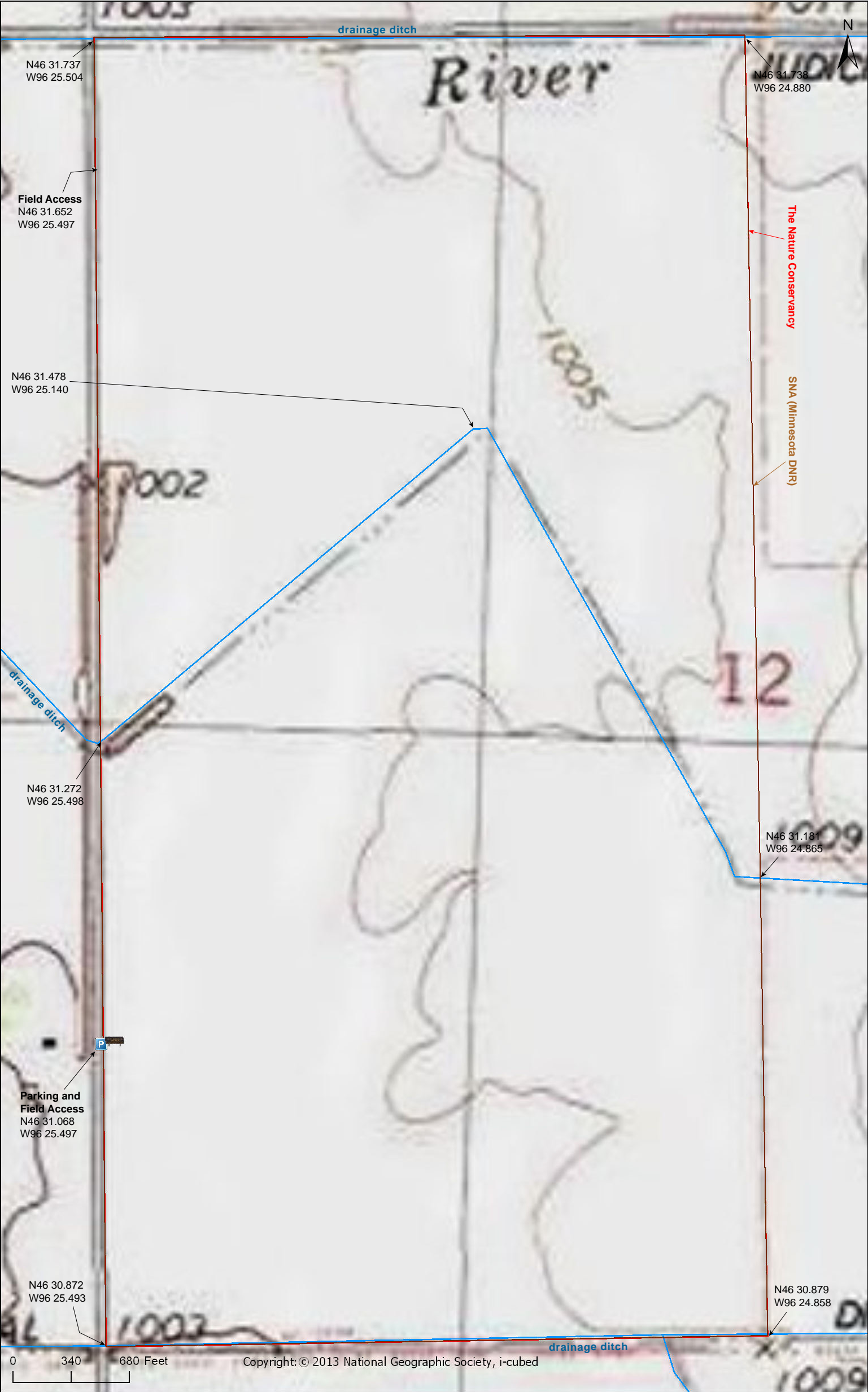




Western Prairie SNA

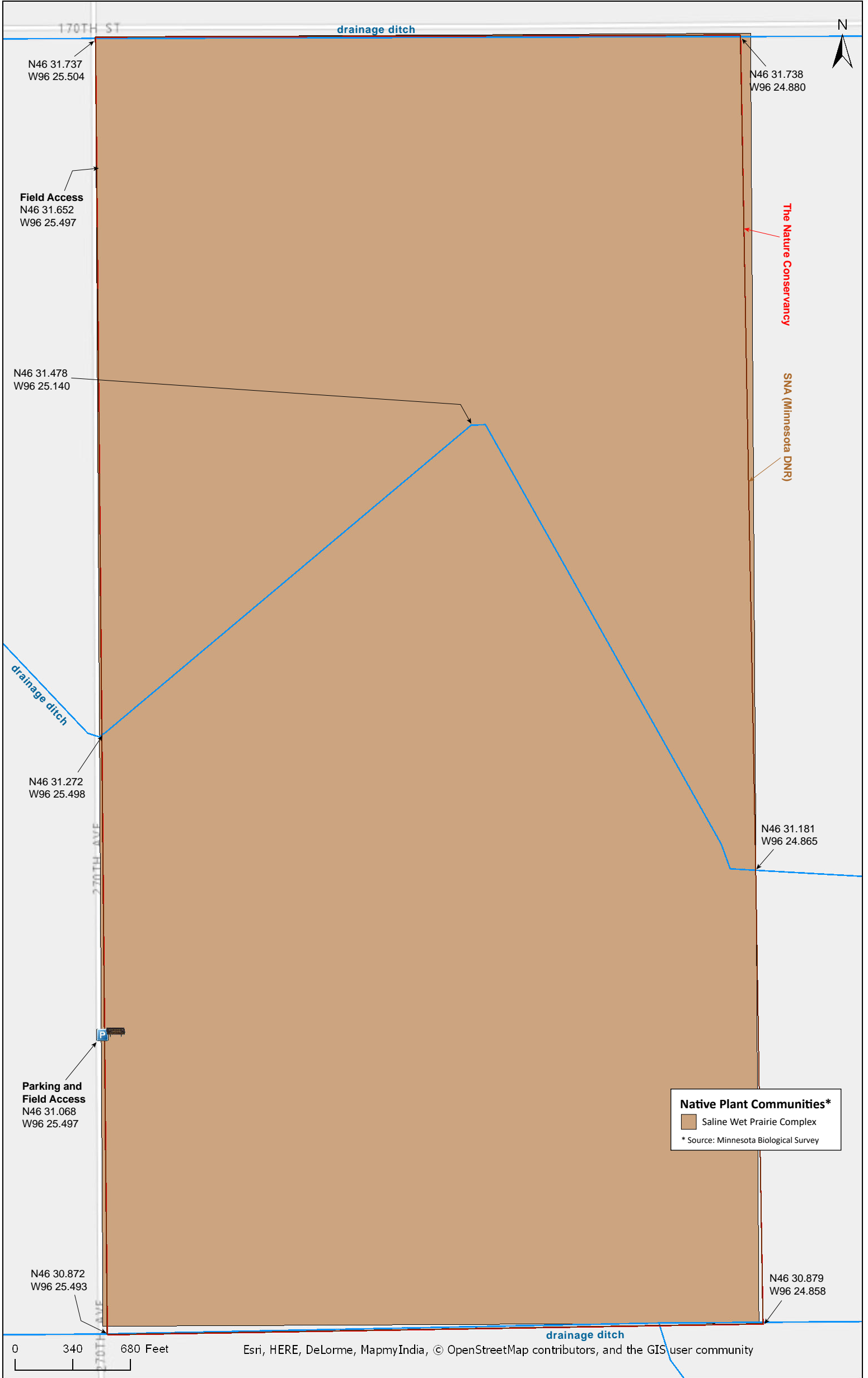
Wilkin County





Western Prairie SNA

Wilkin County





Western Prairie SNA

Directions and Notes from Minnesota DNR

Directions: From Rothsay 7 miles W on Co Hwy 26, then 2.5 miles N on Co Rd 165. Park in pull-off on E.

Lat/Lon: 46.517792, -96.424964

This site has no maintained trails or other recreational facilities. This site is in an Audubon Important Bird Area.

Directions and Notes from The Nature Conservancy

From Lawndale, go west three miles on County Road 30. Travel south on County Road 167 for two miles to the northwest corner of the preserve. The preserve is posted with Scientific and Natural Areas signs. To park, proceed a half-mile south to a pull-in on your left by the preserve sign.

Notes from MinnesotaSeasons.com

Parking

Parking and field access to south section
N46 31.068, W96 25.497

Field access to north section
N46 31.652, W96 25.497

Ditch Crossings

A stream divides the prairie from east to west into two sections and drainage ditches border the north, west, and south edges. Dry access to the south section is possible from the parking area. Dry access to the north section is available from a narrow field access on the same road near the northwest corner of the prairie.

DISCLAIMER OF WARRANTIES AND LIMITATIONS OF LIABILITY

MinnesotaSeasons.com, The Nature Conservancy, U.S. Department of Agriculture, Forest Service, U.S. Fish and Wildlife Service, the state of Minnesota, the Minnesota Department of Natural Resources, and their employees, make no representations or warranties, express or implied, with respect to the use of or reliance on the data provided herewith, regardless of its format or means of transmission. There are no guarantees or representations to the user as to the accuracy, currency, completeness, suitability or reliability of this data for any purpose. THE USER ACCEPTS THE DATA AND/OR SOFTWARE "AS IS" AND ASSUMES ALL RISKS ASSOCIATED WITH ITS USE.

IN NO EVENT SHALL MINNESOTASEASONS.COM, TNC, USDA-FS, USFWS, OR MNDNR BE LIABLE FOR ANY DIRECT, INDIRECT, INCIDENTAL, SPECIAL, EXEMPLARY, OR CONSEQUENTIAL DAMAGES (INCLUDING, BUT NOT LIMITED TO, PROCUREMENT OF SUBSTITUTE GOODS OR SERVICES; LOSS OF USE, DATA, OR PROFITS; OR BUSINESS INTERRUPTION) HOWEVER CAUSED AND ON ANY THEORY OF LIABILITY, WHETHER IN CONTRACT, STRICT LIABILITY, OR TORT (INCLUDING NEGLIGENCE OR OTHERS) ARISING IN ANY WAY OUT OF THE USE OF THIS DATA, EVEN IF ADVISED OF THE POSSIBILITY OF SUCH DAMAGE OR FOR ANY CLAIM BY ANY OTHER PARTY.

Your use of the data is acceptance on your part of the terms and conditions set forth herein.