

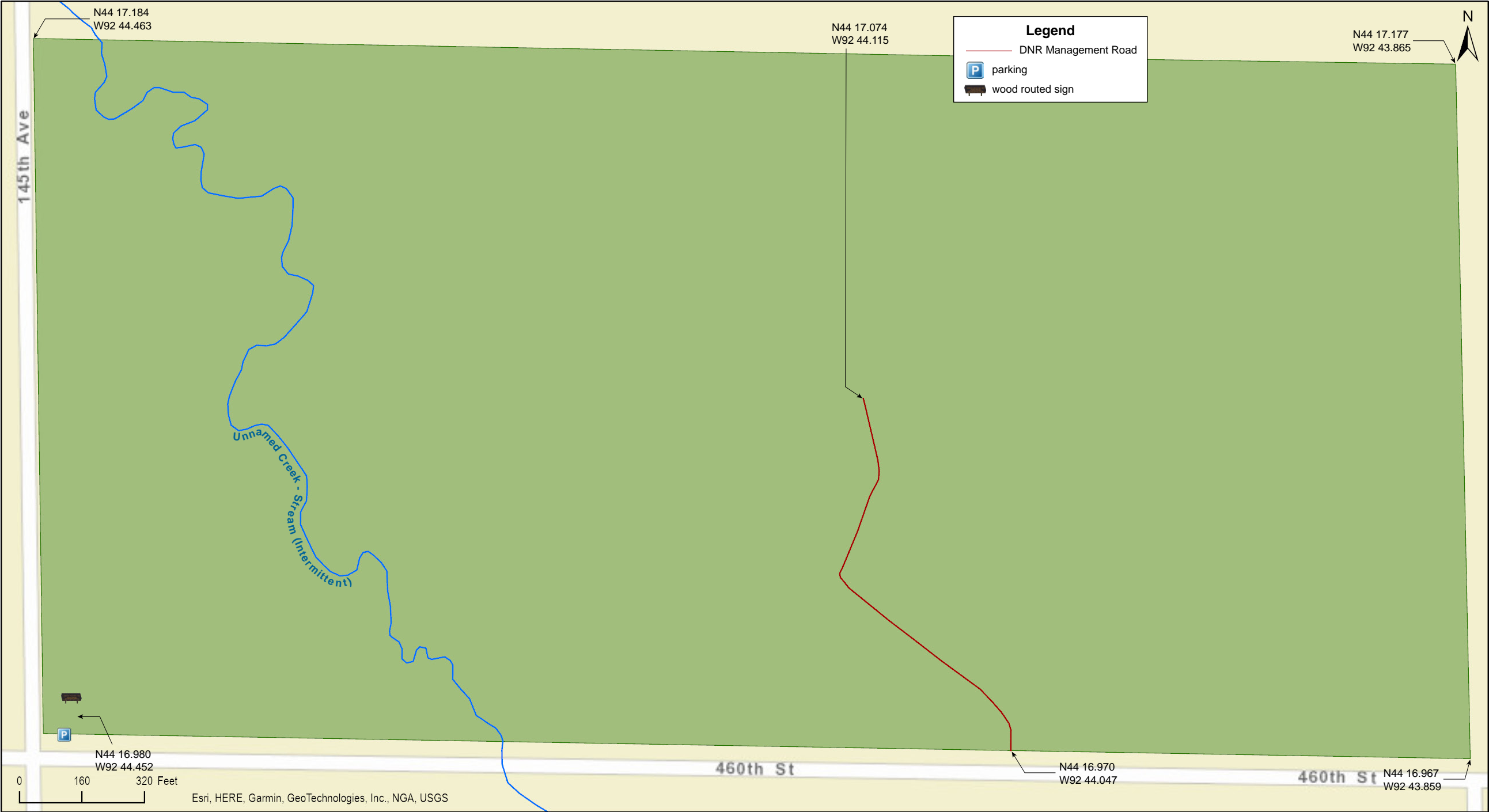
Woodbury WMA

Goodhue County



Woodbury WMA

Goodhue County



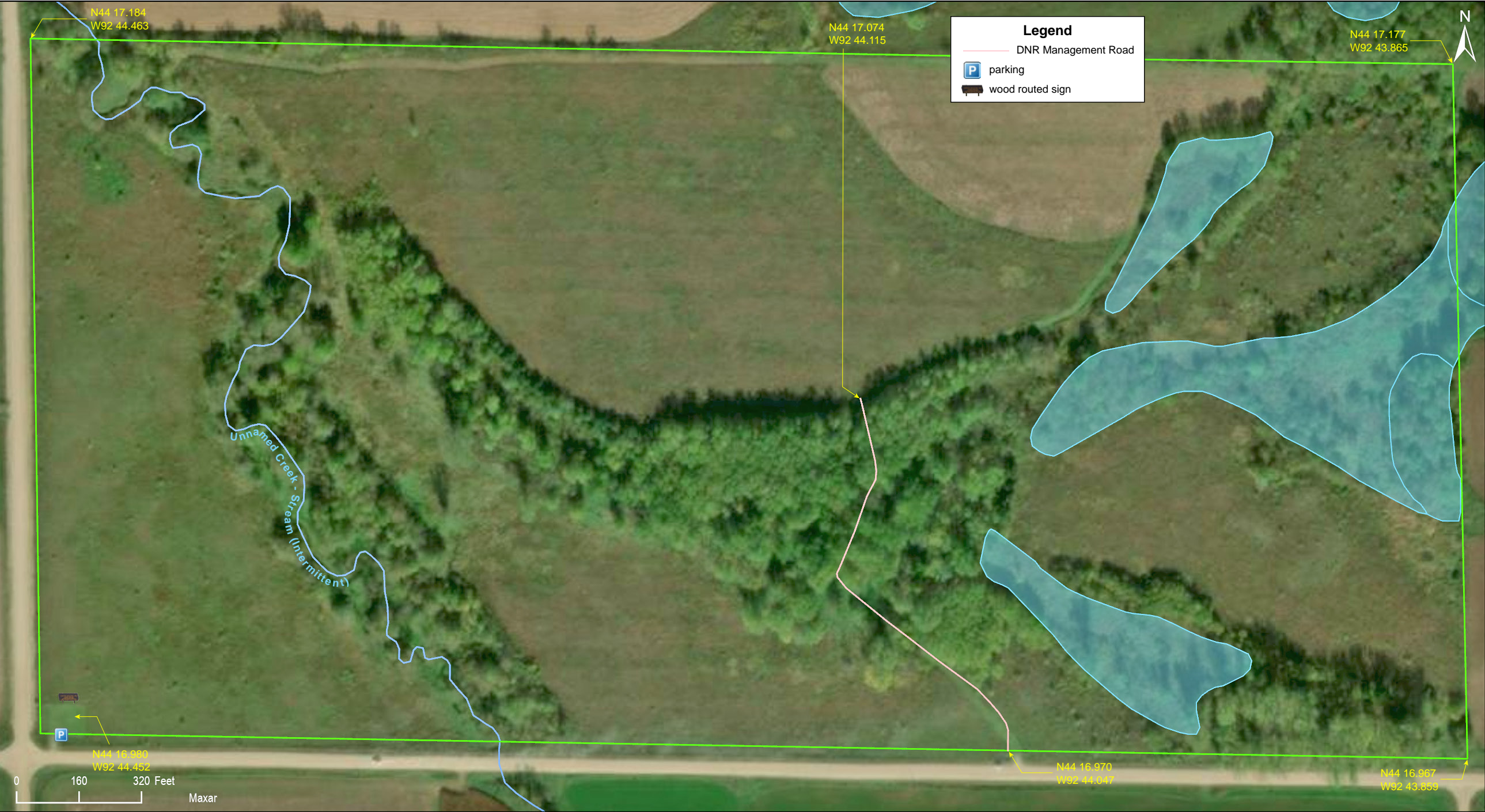


Woodbury WMA

Goodhue County











Landcover

- 1 Tall grassland - planted non-local genotype native grasses with forbs
- 2 Medium-tall non-native dominated grassland
- 3 Crop Rotation Involving Tillage by DNR (non-CFA/Lease)
- 4 Fruit trees (Apple, cherry, plum, etc) on upland soils
- 5 Saturated non-native dominated graminoid vegetation
- 6 Lowland hardwood forest
- 7 Spruce/Fir trees on upland soils
- 8 Eastern red cedar trees on upland soils
- 9 Wet brush-prairie

# Woodbury WMA

## Directions and Notes from Minnesota DNR

### Directions

2 miles west of Zumbrota on 460th St.

## Notes from MinnesotaSeasons.com

### Parking

There is a parking lot with a natural grass surface on the north side of 460th St. at the southwest corner of the WMA.

N44 16.980, W92 44.452

## DISCLAIMER OF WARRANTIES AND LIMITATIONS OF LIABILITY

MinnesotaSeasons.com, The Nature Conservancy, U.S. Department of Agriculture, Forest Service, U.S. Fish and Wildlife Service, the state of Minnesota, the Minnesota Department of Natural Resources, and their employees, make no representations or warranties, express or implied, with respect to the use of or reliance on the data provided herewith, regardless of its format or means of transmission. There are no guarantees or representations to the user as to the accuracy, currency, completeness, suitability or reliability of this data for any purpose. THE USER ACCEPTS THE DATA AND/OR SOFTWARE "AS IS" AND ASSUMES ALL RISKS ASSOCIATED WITH ITS USE.

IN NO EVENT SHALL MINNESOTASEASONS.COM, TNC, USDA-FS, USFWS, OR MNDNR BE LIABLE FOR ANY DIRECT, INDIRECT, INCIDENTAL, SPECIAL, EXEMPLARY, OR CONSEQUENTIAL DAMAGES (INCLUDING, BUT NOT LIMITED TO, PROCUREMENT OF SUBSTITUTE GOODS OR SERVICES; LOSS OF USE, DATA, OR PROFITS; OR BUSINESS INTERRUPTION) HOWEVER CAUSED AND ON ANY THEORY OF LIABILITY, WHETHER IN CONTRACT, STRICT LIABILITY, OR TORT (INCLUDING NEGLIGENCE OR OTHERS) ARISING IN ANY WAY OUT OF THE USE OF THIS DATA, EVEN IF ADVISED OF THE POSSIBILITY OF SUCH DAMAGE OR FOR ANY CLAIM BY ANY OTHER PARTY.

Your use of the data is acceptance on your part of the terms and conditions set forth herein.