

Bald Eagle Bluff SNA

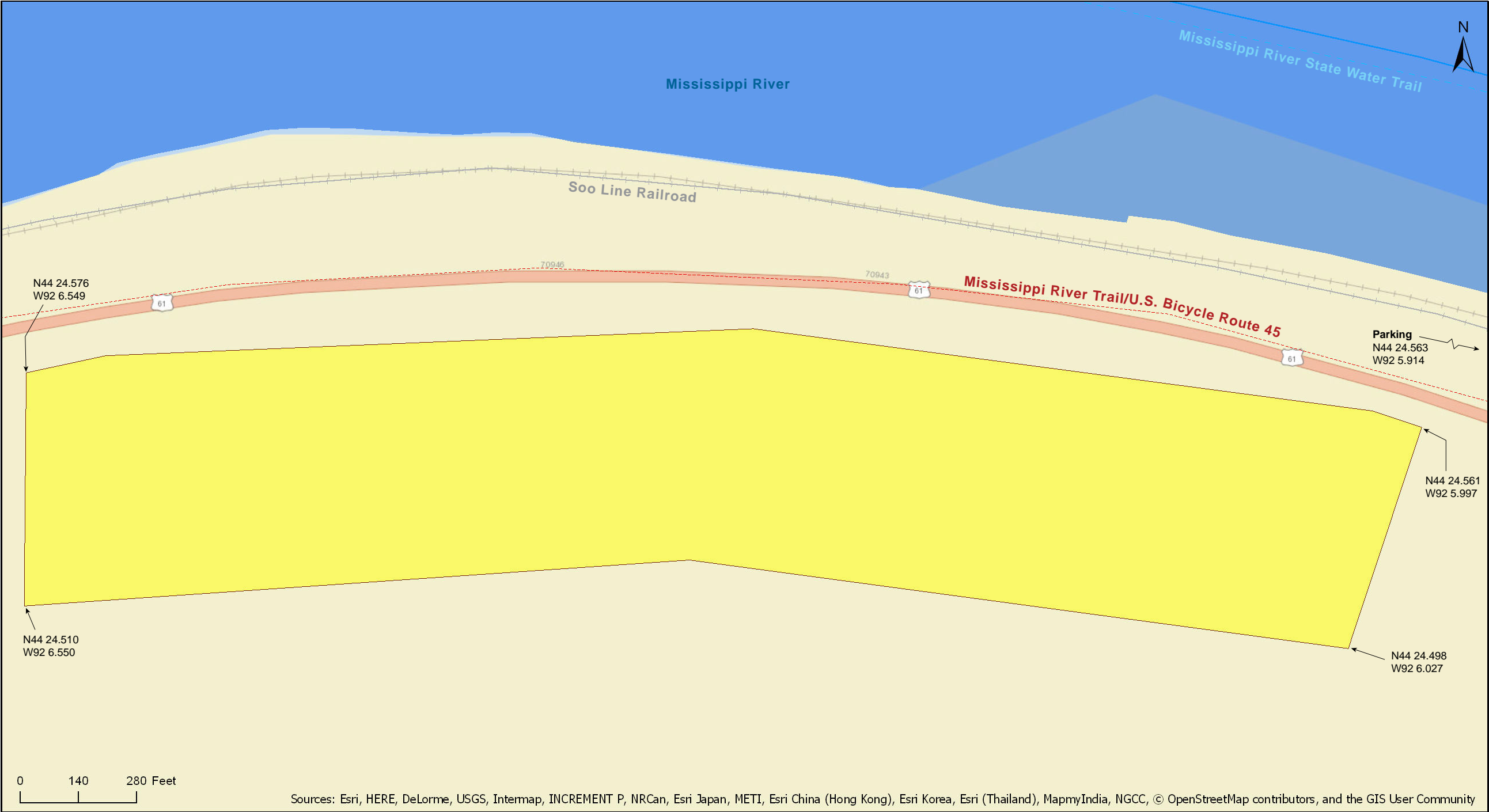
Wabasha County



Source: Esri, DigitalGlobe, GeoEye, Earthstar Geographics, CNES/Airbus DS, USDA, USGS, AeroGRID, IGN, and the GIS User Community

# Bald Eagle Bluff SNA

Wabasha County



Sources: Esri, HERE, DeLorme, USGS, Intermap, INCREMENT P, NRCan, Esri Japan, METI, Esri China (Hong Kong), Esri Korea, Esri (Thailand), MapmyIndia, NGCC, © OpenStreetMap contributors, and the GIS User Community

Bald Eagle Bluff SNA

Wabasha County



CHICAGO

MILWAUKEE

Mississippi River

Mississippi River State Water Trail

Soo Line Railroad

Mississippi River Trail/U.S. Bicycle Route 45

Scenic Overlook

Parking

N44 24.576  
W92 6.549

N44 24.563  
W92 5.914

N44 24.561  
W92 5.997

N44 24.510  
W92 6.550

N44 24.498  
W92 6.027

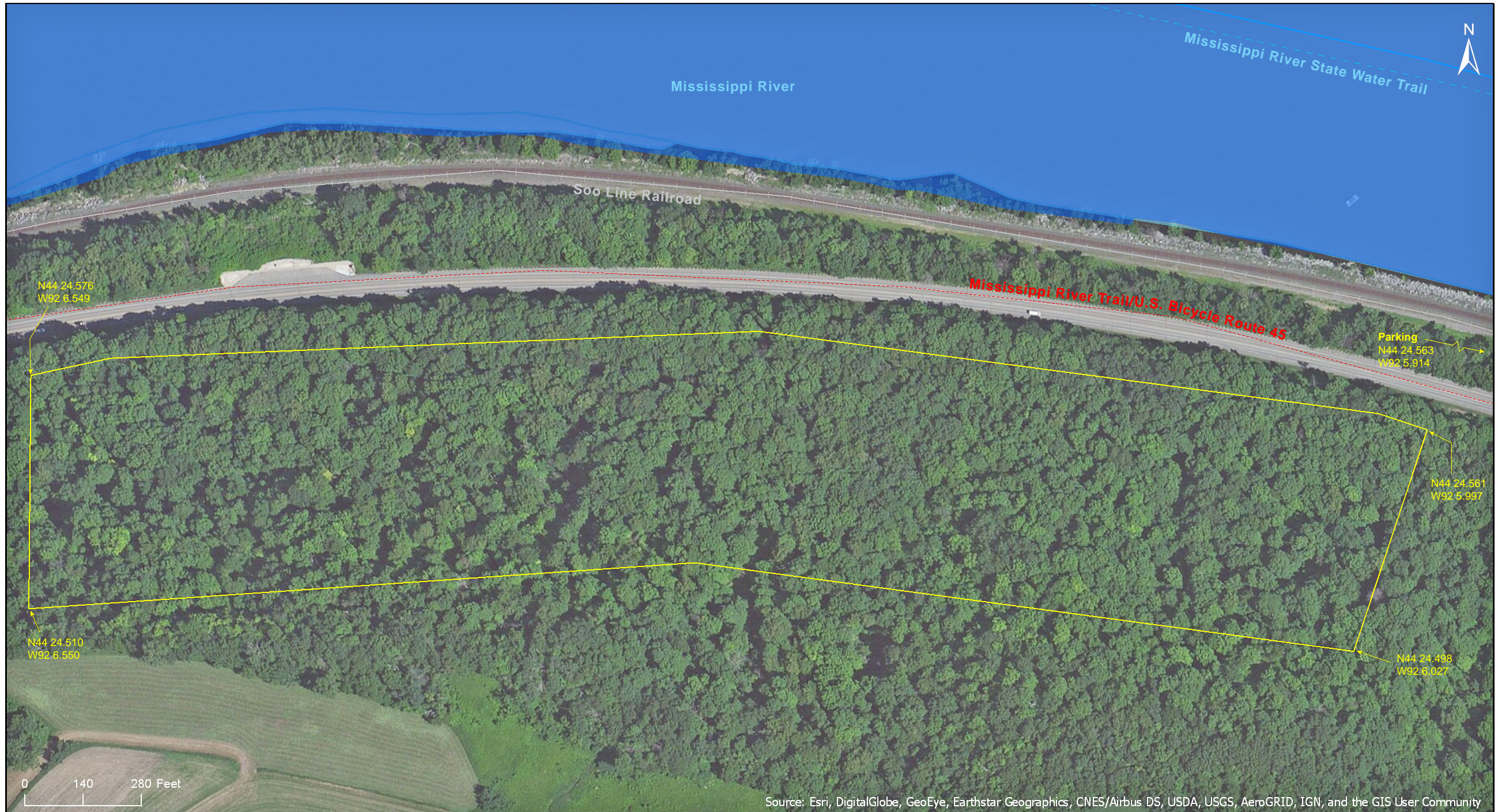
0 140 280 Feet

Copyright: © 2013 National Geographic Society, i-cubed

# Bald Eagle Bluff SNA

Wabasha County





Source: Esri, DigitalGlobe, GeoEye, Earthstar Geographics, CNES/Airbus DS, USDA, USGS, AeroGRID, IGN, and the GIS User Community

# Bald Eagle Bluff SNA

## **Directions and Notes from Minnesota DNR**

**Directions:** From Read's Landing 1 mile NW on US Hwy 61. Park in pull-off on N. Hike about 400 feet W, then across Hwy 61 S and into site.

**Lat/Lon:** 44.409382, -92.098574

This site has no maintained trails or other recreational facilities. The Mississippi River Water Trail is adjacent to this site. This site is an Audubon Important Bird Area.

## **Notes from MinnesotaSeasons.com**

### **Parking**

N44 24.563, W92 5.914

## **DISCLAIMER OF WARRANTIES AND LIMITATIONS OF LIABILITY**

MinnesotaSeasons.com, The Nature Conservancy, U.S. Department of Agriculture, Forest Service, U.S. Fish and Wildlife Service, the state of Minnesota, the Minnesota Department of Natural Resources, and their employees, make no representations or warranties, express or implied, with respect to the use of or reliance on the data provided herewith, regardless of its format or means of transmission. There are no guarantees or representations to the user as to the accuracy, currency, completeness, suitability or reliability of this data for any purpose. THE USER ACCEPTS THE DATA AND/OR SOFTWARE "AS IS" AND ASSUMES ALL RISKS ASSOCIATED WITH ITS USE.

IN NO EVENT SHALL MINNESOTASEASONS.COM, TNC, USDA-FS, USFWS, OR MNDNR BE LIABLE FOR ANY DIRECT, INDIRECT, INCIDENTAL, SPECIAL, EXEMPLARY, OR CONSEQUENTIAL DAMAGES (INCLUDING, BUT NOT LIMITED TO, PROCUREMENT OF SUBSTITUTE GOODS OR SERVICES; LOSS OF USE, DATA, OR PROFITS; OR BUSINESS INTERRUPTION) HOWEVER CAUSED AND ON ANY THEORY OF LIABILITY, WHETHER IN CONTRACT, STRICT LIABILITY, OR TORT (INCLUDING NEGLIGENCE OR OTHERS) ARISING IN ANY WAY OUT OF THE USE OF THIS DATA, EVEN IF ADVISED OF THE POSSIBILITY OF SUCH DAMAGE OR FOR ANY CLAIM BY ANY OTHER PARTY.

Your use of the data is acceptance on your part of the terms and conditions set forth herein.