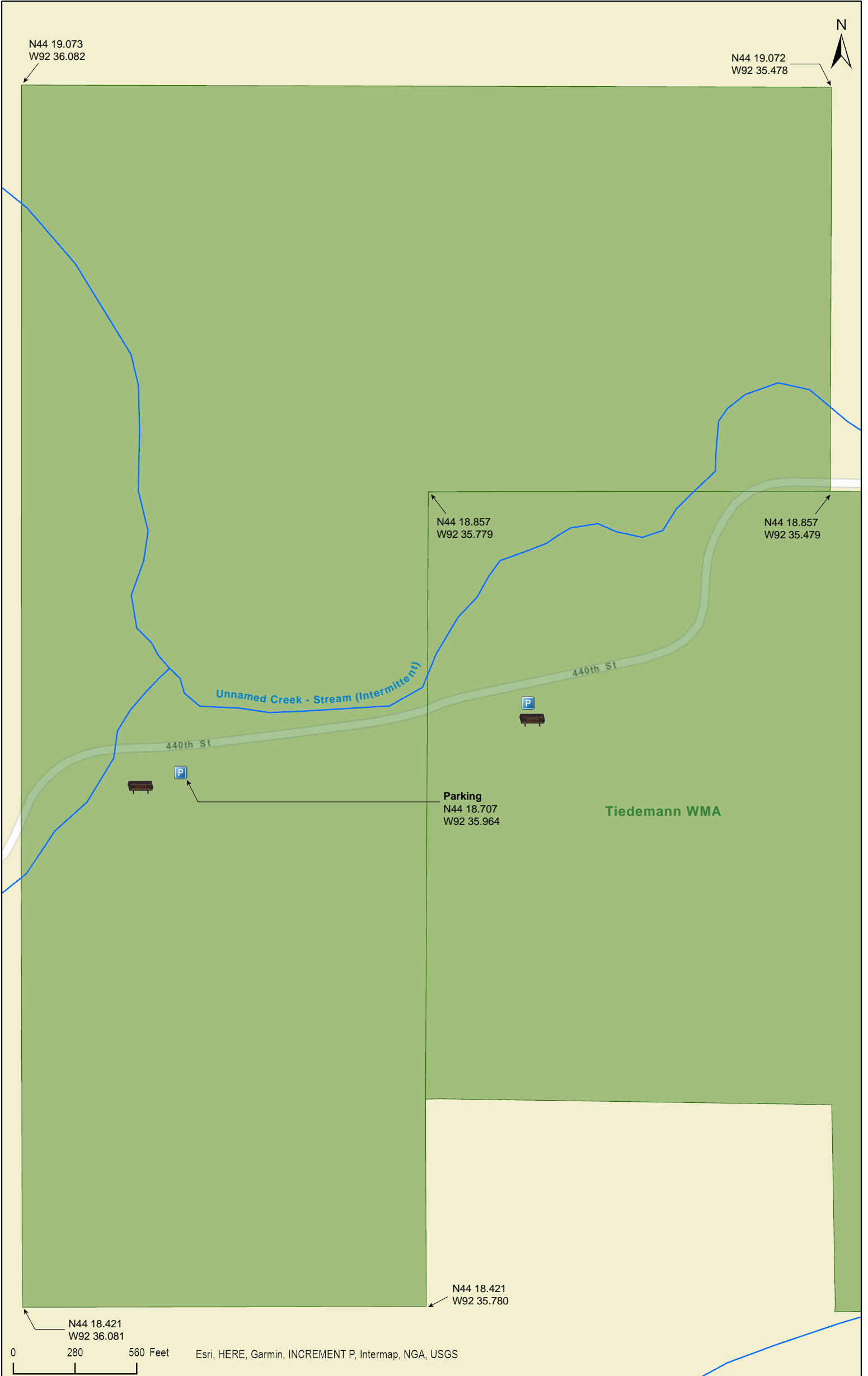
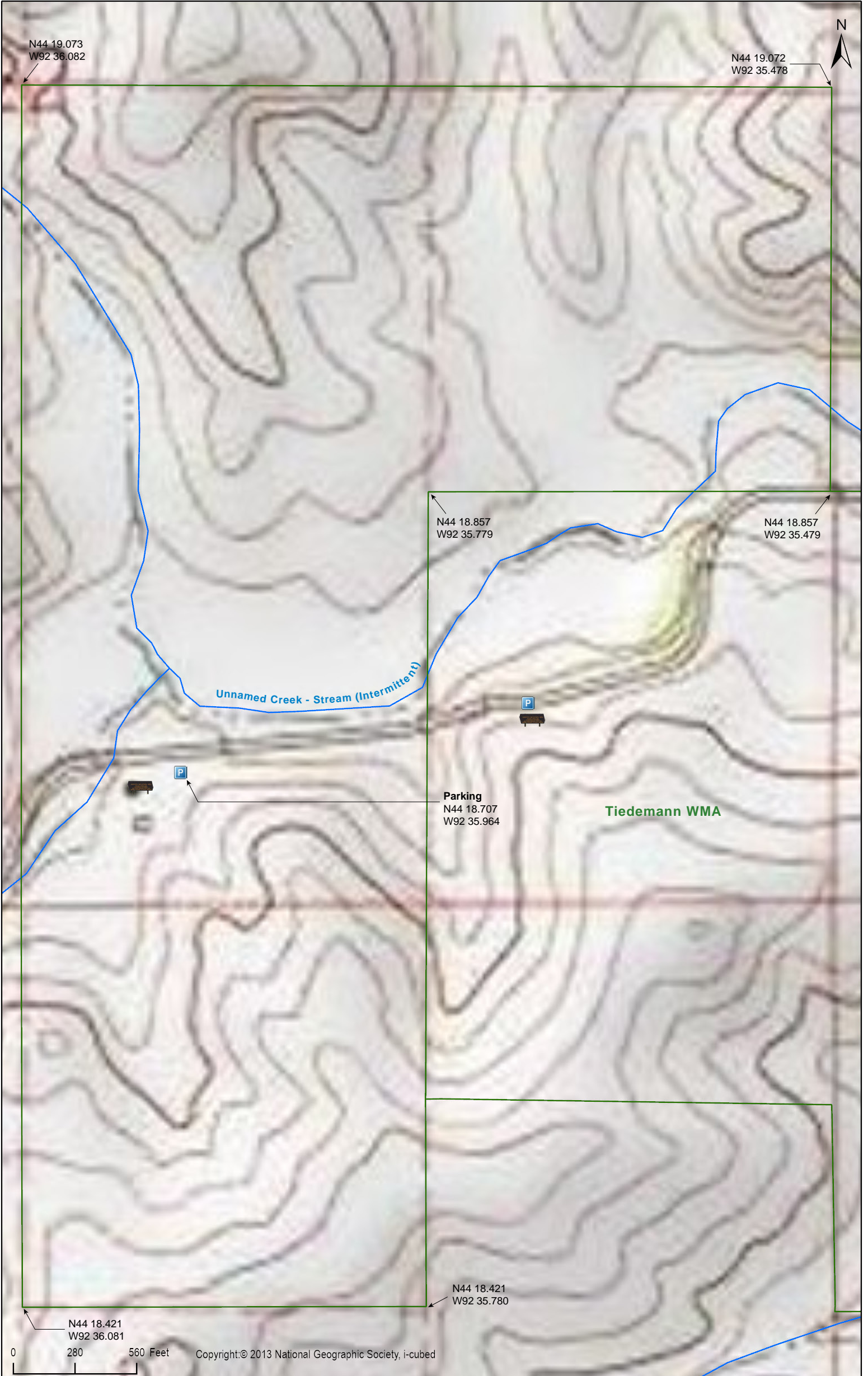
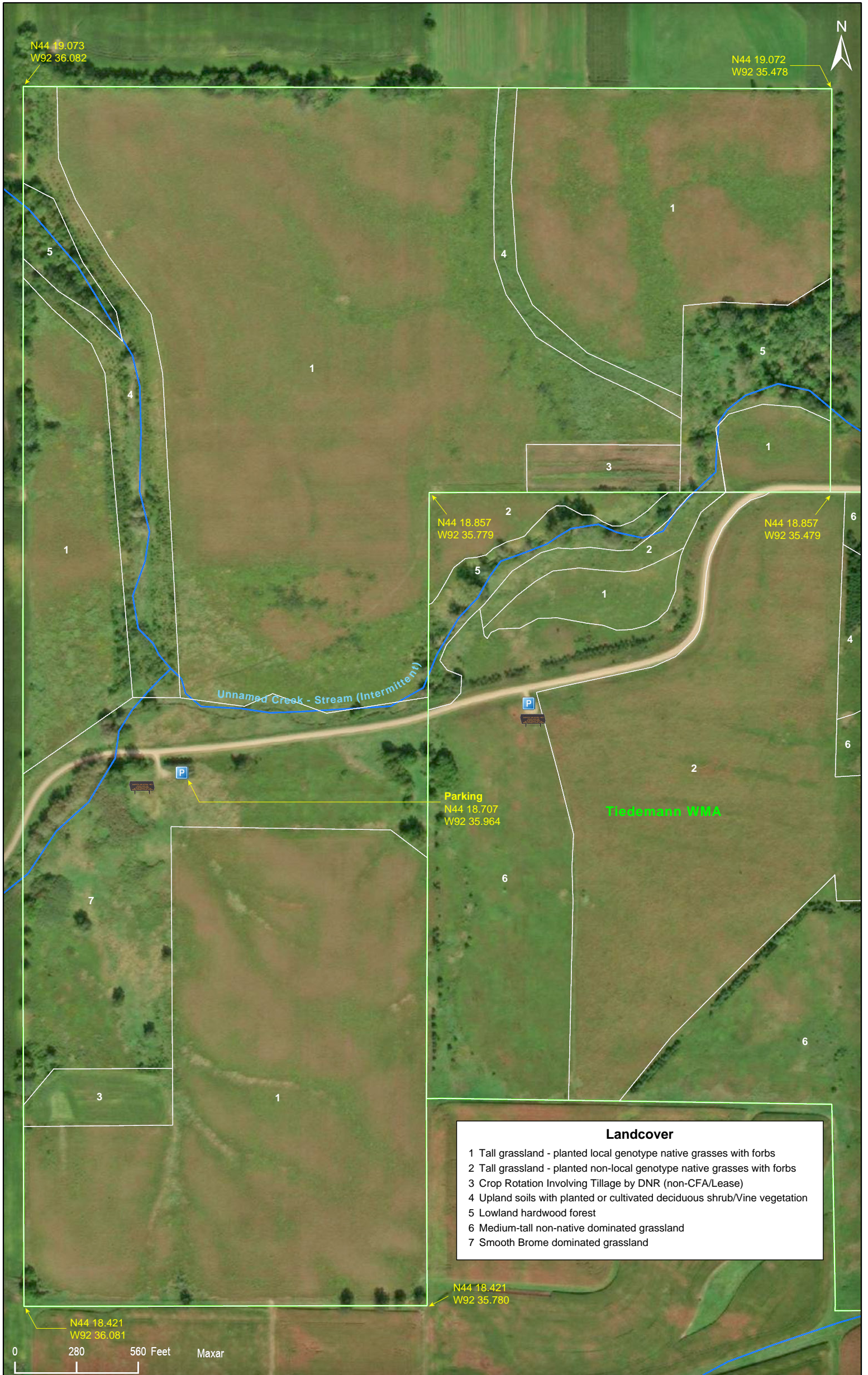


# Buck Family Memorial WMA

Goodhue County

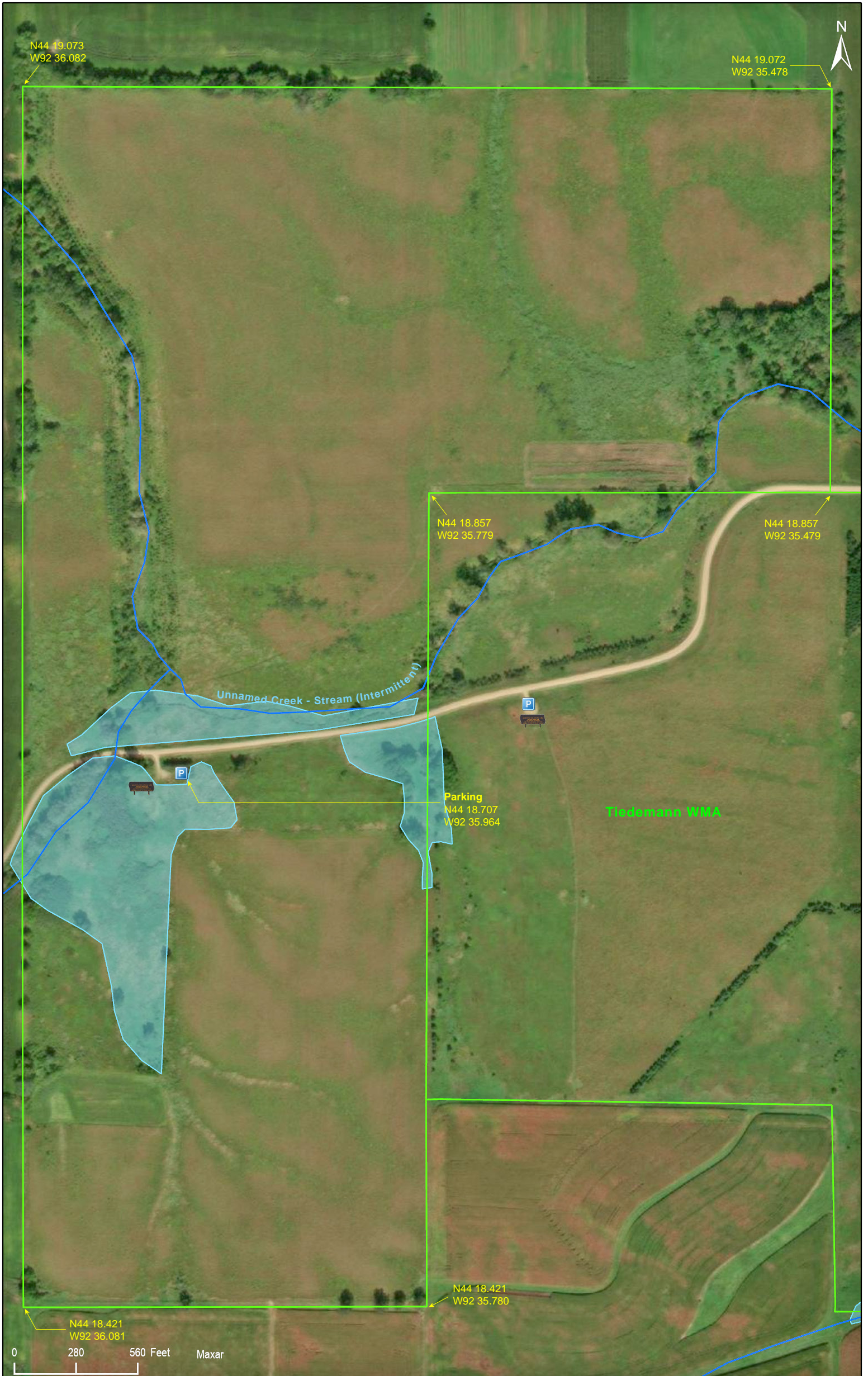






**Landcover**

- 1 Tall grassland - planted local genotype native grasses with forbs
- 2 Tall grassland - planted non-local genotype native grasses with forbs
- 3 Crop Rotation Involving Tillage by DNR (non-CFA/Lease)
- 4 Upland soils with planted or cultivated deciduous shrub/Vine vegetation
- 5 Lowland hardwood forest
- 6 Medium-tall non-native dominated grassland
- 7 Smooth Brome dominated grassland



# Buck Family Memorial WMA

## **Directions and Notes from Minnesota DNR**

### **Directions**

From Zumbrota, go 3 miles east on Goodhue County Rd. 10, then 1/2 mile left on 210th Ave., and then 1/2 mile right on 440th St.

## **Notes from MinnesotaSeasons.com**

### **Parking**

There is a parking lot with a gravel surface on the south side of 440th St.  
N44 18.707, W92 35.964

## **DISCLAIMER OF WARRANTIES AND LIMITATIONS OF LIABILITY**

MinnesotaSeasons.com, The Nature Conservancy, U.S. Department of Agriculture, Forest Service, U.S. Fish and Wildlife Service, the state of Minnesota, the Minnesota Department of Natural Resources, and their employees, make no representations or warranties, express or implied, with respect to the use of or reliance on the data provided herewith, regardless of its format or means of transmission. There are no guarantees or representations to the user as to the accuracy, currency, completeness, suitability or reliability of this data for any purpose. THE USER ACCEPTS THE DATA AND/OR SOFTWARE "AS IS" AND ASSUMES ALL RISKS ASSOCIATED WITH ITS USE.

IN NO EVENT SHALL MINNESOTASEASONS.COM, TNC, USDA-FS, USFWS, OR MNDNR BE LIABLE FOR ANY DIRECT, INDIRECT, INCIDENTAL, SPECIAL, EXEMPLARY, OR CONSEQUENTIAL DAMAGES (INCLUDING, BUT NOT LIMITED TO, PROCUREMENT OF SUBSTITUTE GOODS OR SERVICES; LOSS OF USE, DATA, OR PROFITS; OR BUSINESS INTERRUPTION) HOWEVER CAUSED AND ON ANY THEORY OF LIABILITY, WHETHER IN CONTRACT, STRICT LIABILITY, OR TORT (INCLUDING NEGLIGENCE OR OTHERS) ARISING IN ANY WAY OUT OF THE USE OF THIS DATA, EVEN IF ADVISED OF THE POSSIBILITY OF SUCH DAMAGE OR FOR ANY CLAIM BY ANY OTHER PARTY.

Your use of the data is acceptance on your part of the terms and conditions set forth herein.