

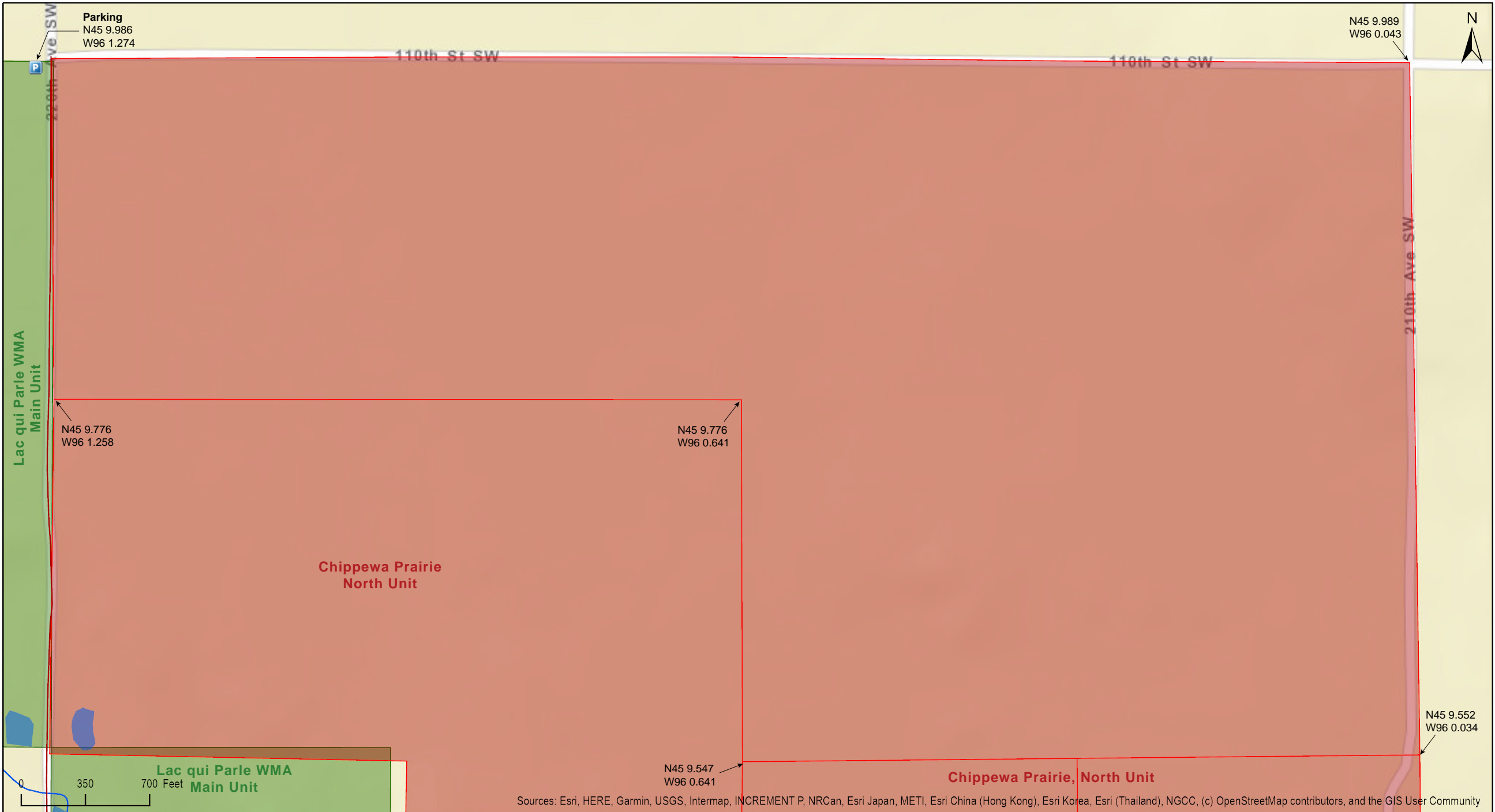
Chippewa Prairie Addition

Swift County



Chippewa Prairie Addition

Swift County



Chippewa Prairie Addition

Swift County





Chippewa Prairie Addition

Directions and Notes from The Nature Conservancy

Location

NE 1/4 and the N 1/2 of the NW 1/4 of Section 35, Appleton Township, Swift County; 96°0'2"W 45°9'58"N (45.1661111°, -096.0005556°)

Notes from MinnesotaSeasons.com

Parking

110th St. SW

There is a natural/grass surface parking lot at 110th St. SW and 220th Ave. SW. Lac qui Parle WMA, Main Unit, is to the southwest of this intersection, Chippewa Prairie Addition is to the southeast, private property is to the north. N45 9.986, W96 1.274

Chippewa Swift St. NW

The best parking in this area is a large natural surface parking lot at Chippewa Swift St. NW and 210th Ave. SW. Lac qui Parle WMA, Main Unit, is to the southwest of this intersection, Chippewa Prairie is to the northwest and southeast, and private property is to the northeast. Walk north on Chippewa Prairie one half mile to the southeast corner of Chippewa Prairie Addition. N45 9.115, W96 0.046

DISCLAIMER OF WARRANTIES AND LIMITATIONS OF LIABILITY

MinnesotaSeasons.com, The Nature Conservancy, U.S. Department of Agriculture, Forest Service, U.S. Fish and Wildlife Service, the state of Minnesota, the Minnesota Department of Natural Resources, and their employees, make no representations or warranties, express or implied, with respect to the use of or reliance on the data provided herewith, regardless of its format or means of transmission. There are no guarantees or representations to the user as to the accuracy, currency, completeness, suitability or reliability of this data for any purpose. THE USER ACCEPTS THE DATA AND/OR SOFTWARE "AS IS" AND ASSUMES ALL RISKS ASSOCIATED WITH ITS USE.

IN NO EVENT SHALL MINNESOTASEASONS.COM, TNC, USDA-FS, USFWS, OR MNDNR BE LIABLE FOR ANY DIRECT, INDIRECT, INCIDENTAL, SPECIAL, EXEMPLARY, OR CONSEQUENTIAL DAMAGES (INCLUDING, BUT NOT LIMITED TO, PROCUREMENT OF SUBSTITUTE GOODS OR SERVICES; LOSS OF USE, DATA, OR PROFITS; OR BUSINESS INTERRUPTION) HOWEVER CAUSED AND ON ANY THEORY OF LIABILITY, WHETHER IN CONTRACT, STRICT LIABILITY, OR TORT (INCLUDING NEGLIGENCE OR OTHERS) ARISING IN ANY WAY OUT OF THE USE OF THIS DATA, EVEN IF ADVISED OF THE POSSIBILITY OF SUCH DAMAGE OR FOR ANY CLAIM BY ANY OTHER PARTY.

Your use of the data is acceptance on your part of the terms and conditions set forth herein.