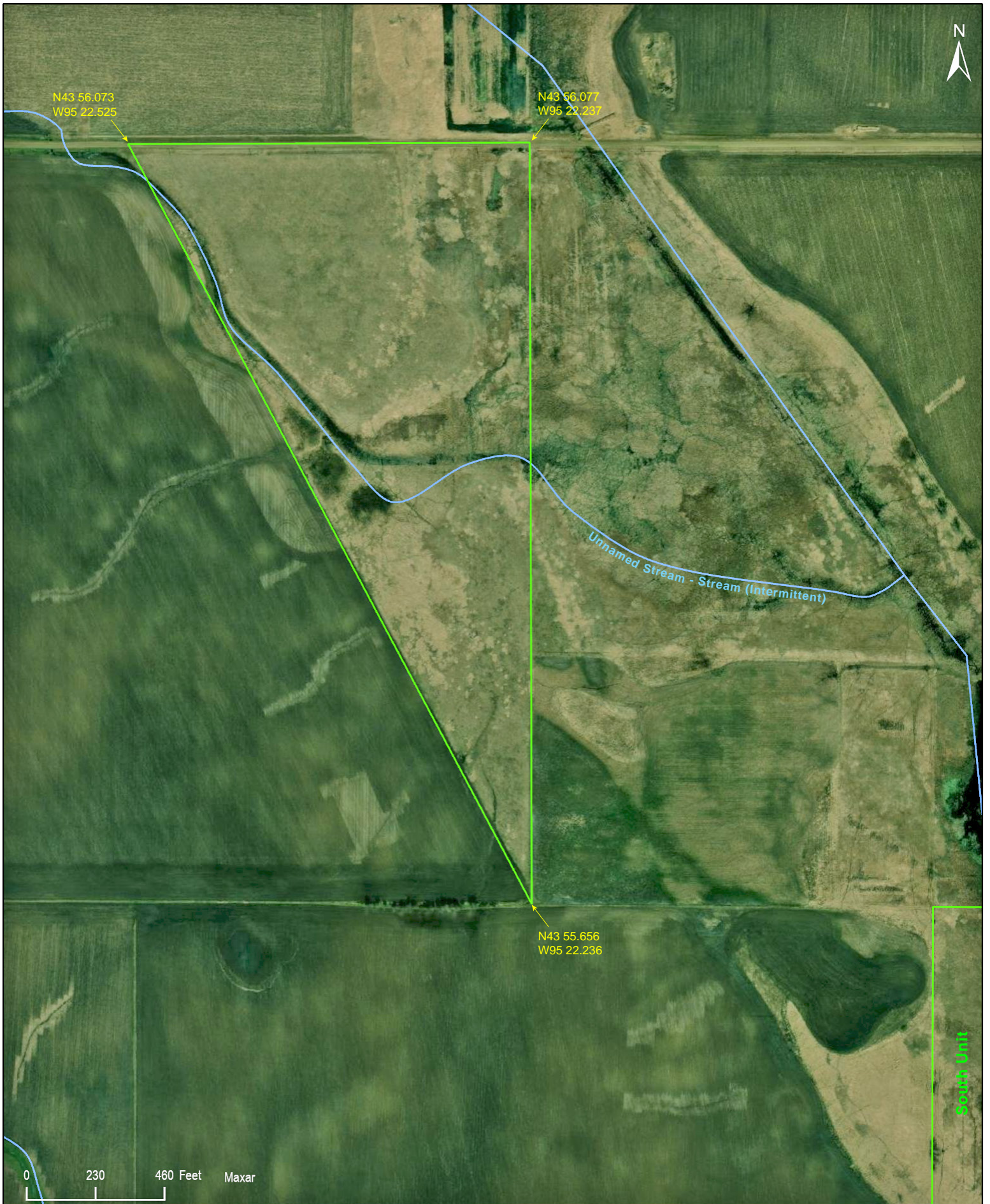


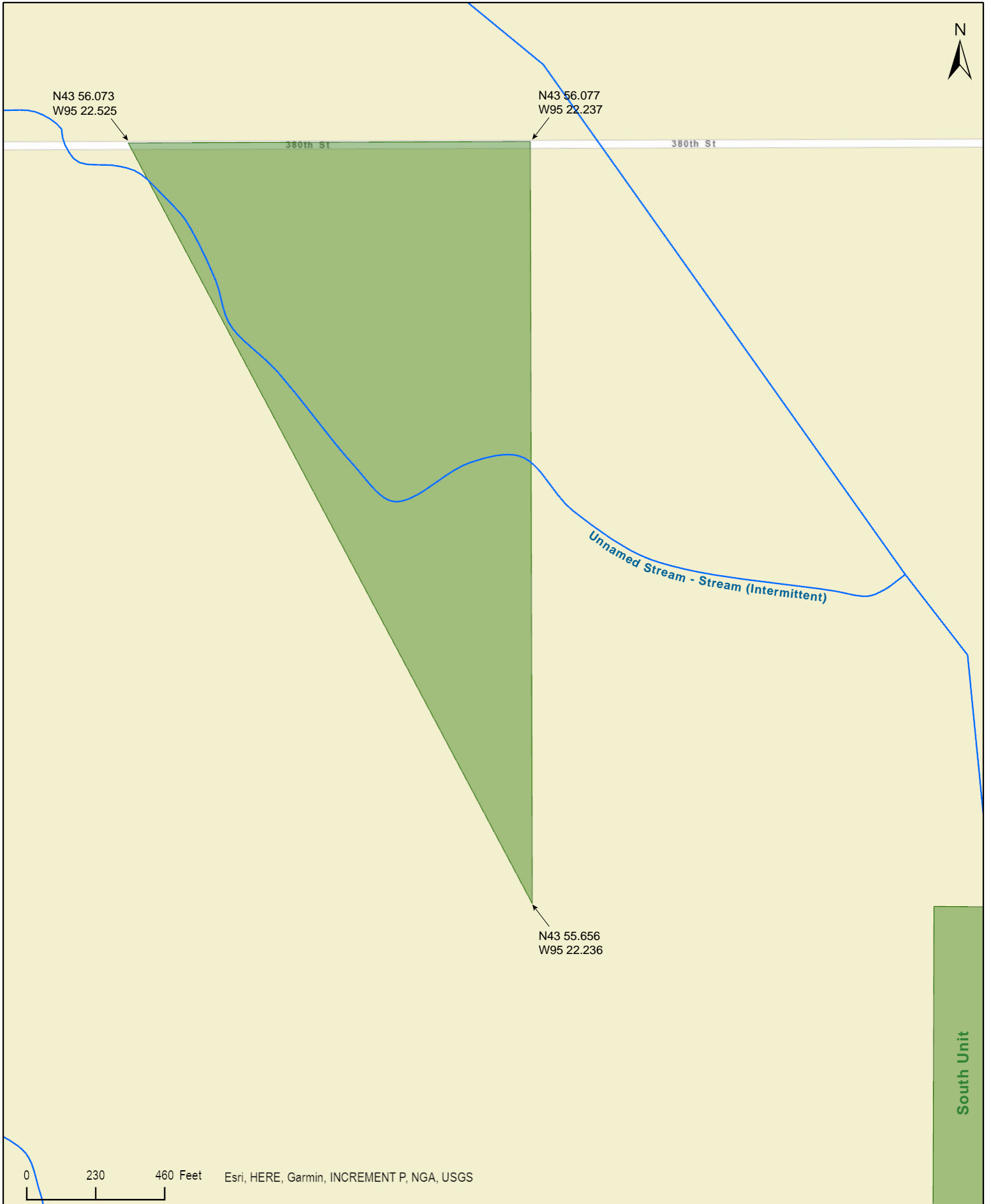
# Expandere WMA North Unit

Cottonwood County



# Expandere WMA North Unit

Cottonwood County



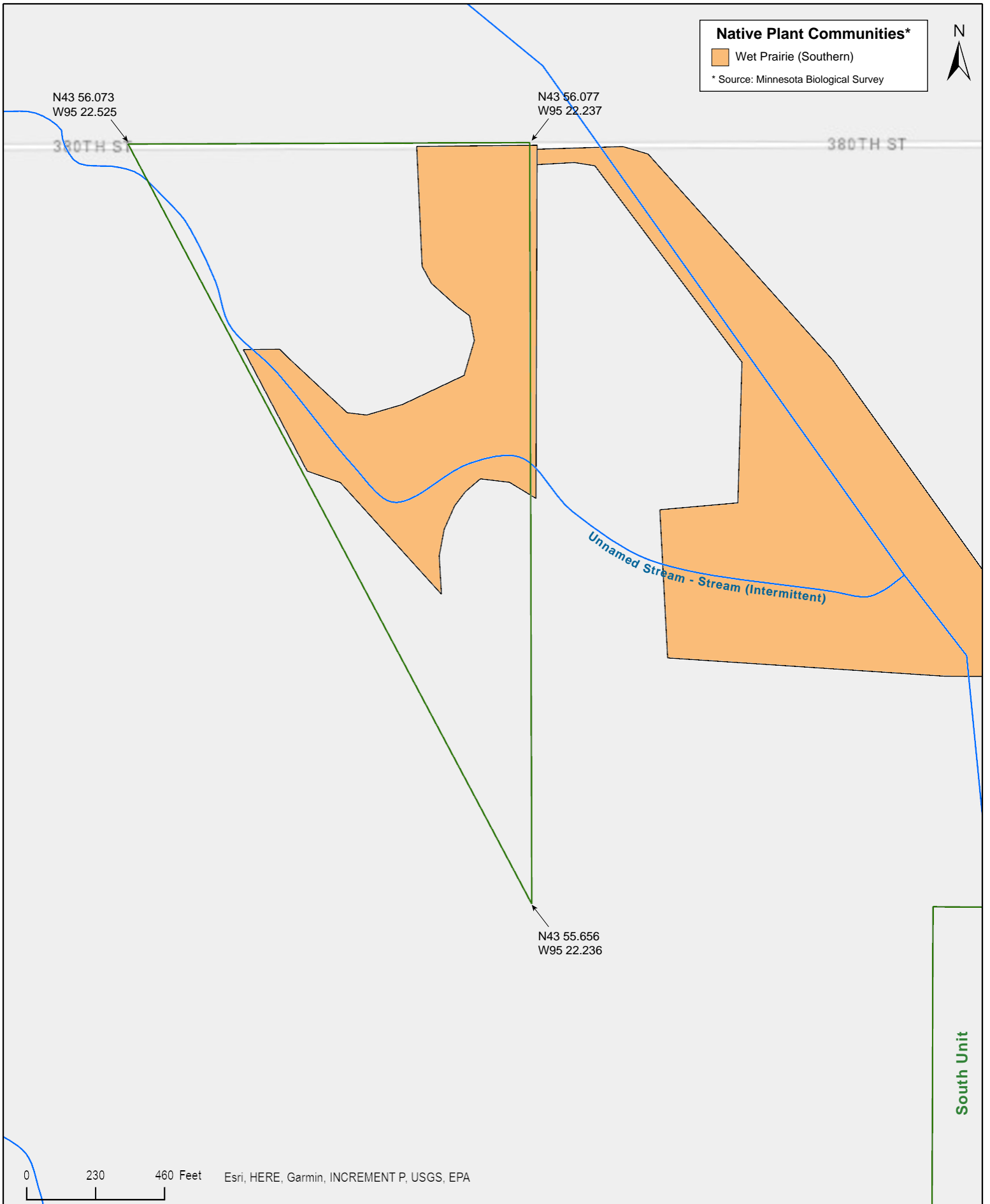
# Expandere WMA North Unit

Cottonwood County



# Expandere WMA North Unit

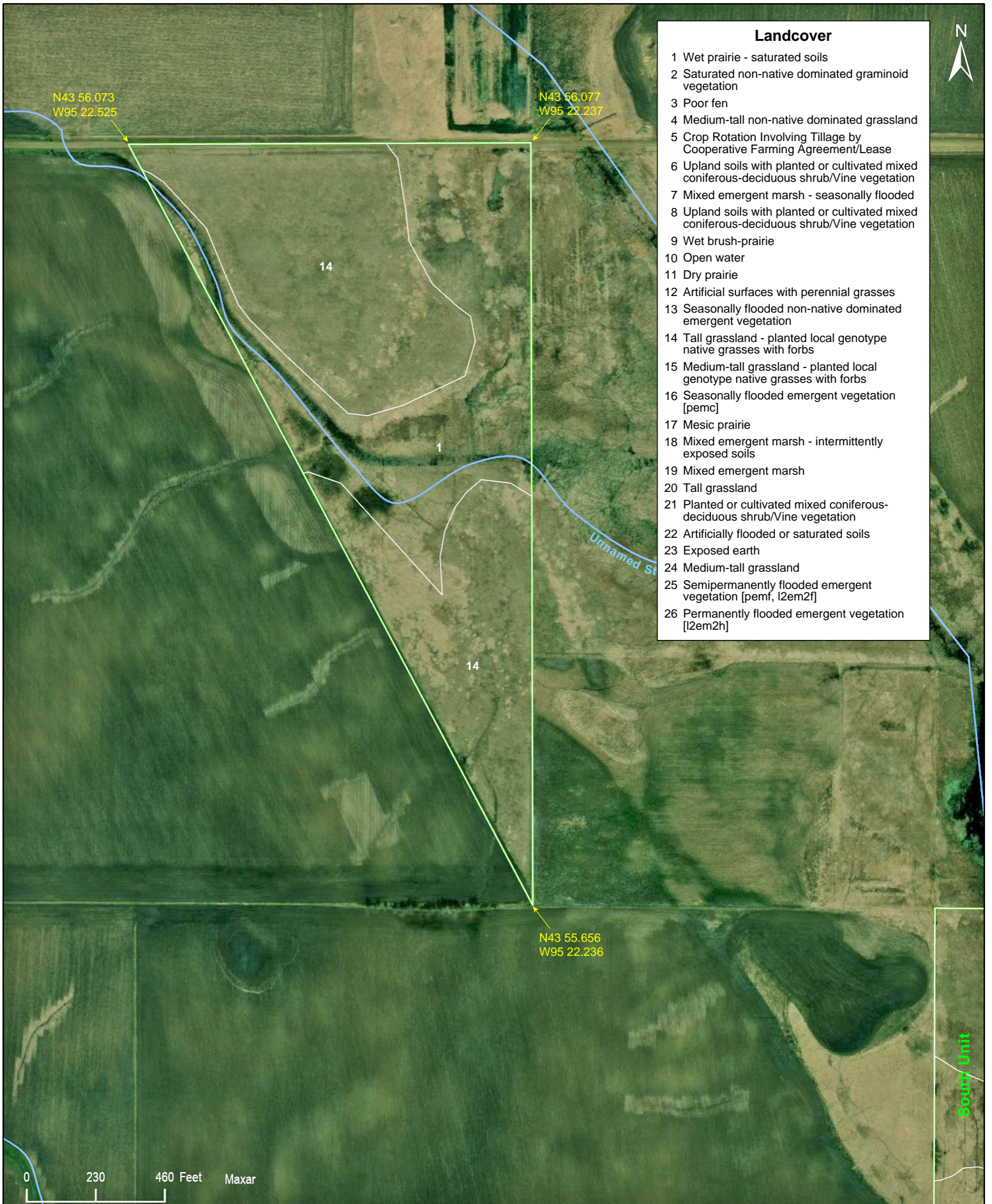
Cottonwood County



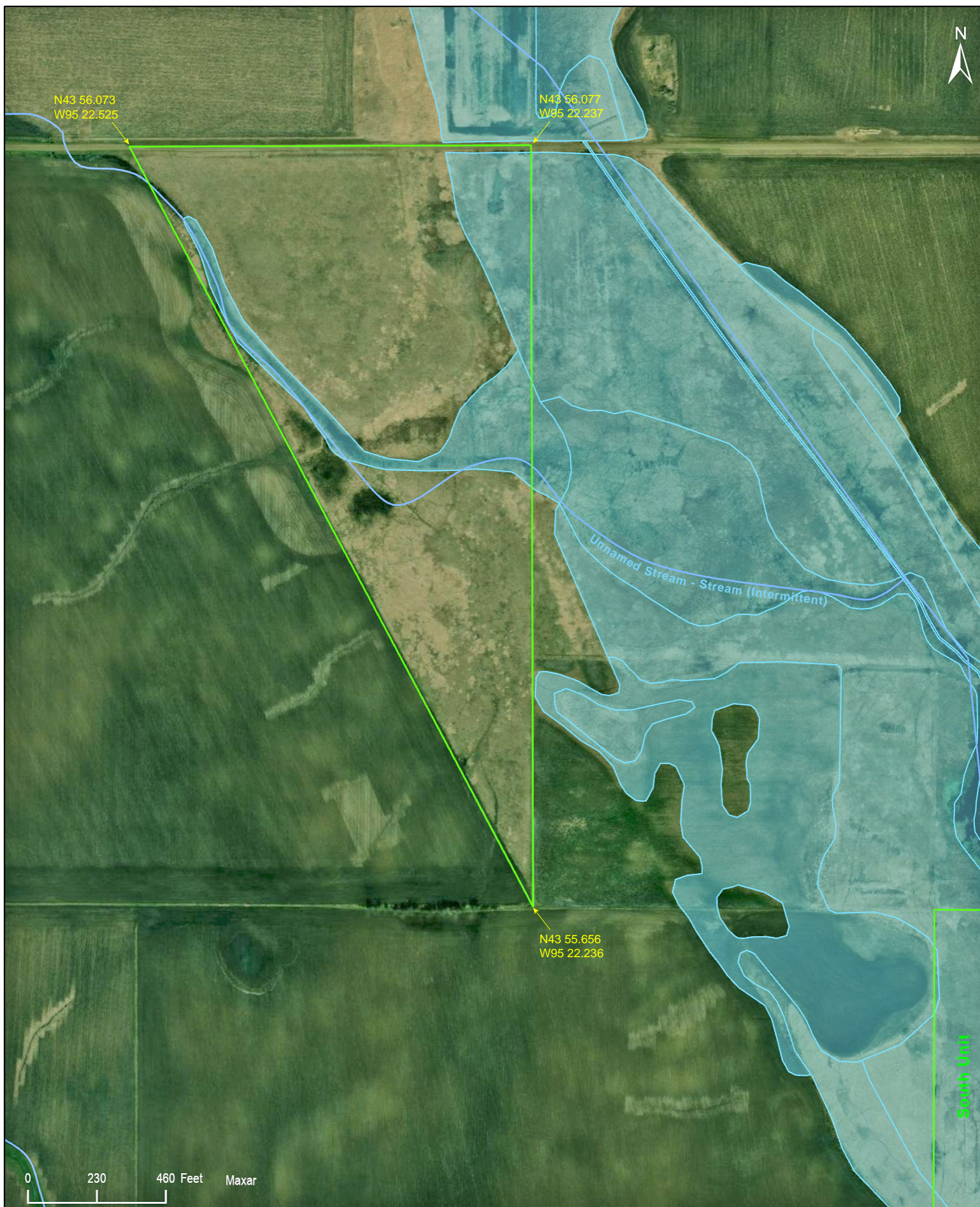
# Expandere WMA North Unit

Cottonwood County

Landcover



- Landcover**
- 1 Wet prairie - saturated soils
  - 2 Saturated non-native dominated graminoid vegetation
  - 3 Poor fen
  - 4 Medium-tall non-native dominated grassland
  - 5 Crop Rotation Involving Tillage by Cooperative Farming Agreement/Lease
  - 6 Upland soils with planted or cultivated mixed coniferous-deciduous shrub/Vine vegetation
  - 7 Mixed emergent marsh - seasonally flooded
  - 8 Upland soils with planted or cultivated mixed coniferous-deciduous shrub/Vine vegetation
  - 9 Wet brush-prairie
  - 10 Open water
  - 11 Dry prairie
  - 12 Artificial surfaces with perennial grasses
  - 13 Seasonally flooded non-native dominated emergent vegetation
  - 14 Tall grassland - planted local genotype native grasses with forbs
  - 15 Medium-tall grassland - planted local genotype native grasses with forbs
  - 16 Seasonally flooded emergent vegetation [pemc]
  - 17 Mesic prairie
  - 18 Mixed emergent marsh - intermittently exposed soils
  - 19 Mixed emergent marsh
  - 20 Tall grassland
  - 21 Planted or cultivated mixed coniferous-deciduous shrub/Vine vegetation
  - 22 Artificially flooded or saturated soils
  - 23 Exposed earth
  - 24 Medium-tall grassland
  - 25 Semipermanently flooded emergent vegetation [pemf, l2em2f]
  - 26 Permanently flooded emergent vegetation [l2em2h]



# Expandere WMA North Unit

## **Directions and Notes from Minnesota DNR**

From Storden, go 8 miles S on CSAH 5 then 1 mile W on TWN RD.

## **Notes from MinnesotaSeasons.com**

### **Parking**

There is no parking lot or designated parking area for this WMA. Directions on the DNR Website lead to these coordinates on 390th St.

390th St.  
N43 55.222, W95 20.423

There is a 100-yard "DNR Management Road open to Public Foot Travel" on 390th St. just west of 360th Ave.

DNR Management Road  
N43 55.222, W95 21.713

## **DISCLAIMER OF WARRANTIES AND LIMITATIONS OF LIABILITY**

MinnesotaSeasons.com, The Nature Conservancy, U.S. Department of Agriculture, Forest Service, U.S. Fish and Wildlife Service, the state of Minnesota, the Minnesota Department of Natural Resources, and their employees, make no representations or warranties, express or implied, with respect to the use of or reliance on the data provided herewith, regardless of its format or means of transmission. There are no guarantees or representations to the user as to the accuracy, currency, completeness, suitability or reliability of this data for any purpose. THE USER ACCEPTS THE DATA AND/OR SOFTWARE "AS IS" AND ASSUMES ALL RISKS ASSOCIATED WITH ITS USE.

IN NO EVENT SHALL MINNESOTASEASONS.COM, TNC, USDA-FS, USFWS, OR MNDNR BE LIABLE FOR ANY DIRECT, INDIRECT, INCIDENTAL, SPECIAL, EXEMPLARY, OR CONSEQUENTIAL DAMAGES (INCLUDING, BUT NOT LIMITED TO, PROCUREMENT OF SUBSTITUTE GOODS OR SERVICES; LOSS OF USE, DATA, OR PROFITS; OR BUSINESS INTERRUPTION) HOWEVER CAUSED AND ON ANY THEORY OF LIABILITY, WHETHER IN CONTRACT, STRICT LIABILITY, OR TORT (INCLUDING NEGLIGENCE OR OTHERS) ARISING IN ANY WAY OUT OF THE USE OF THIS DATA, EVEN IF ADVISED OF THE POSSIBILITY OF SUCH DAMAGE OR FOR ANY CLAIM BY ANY OTHER PARTY.

Your use of the data is acceptance on your part of the terms and conditions set forth herein.