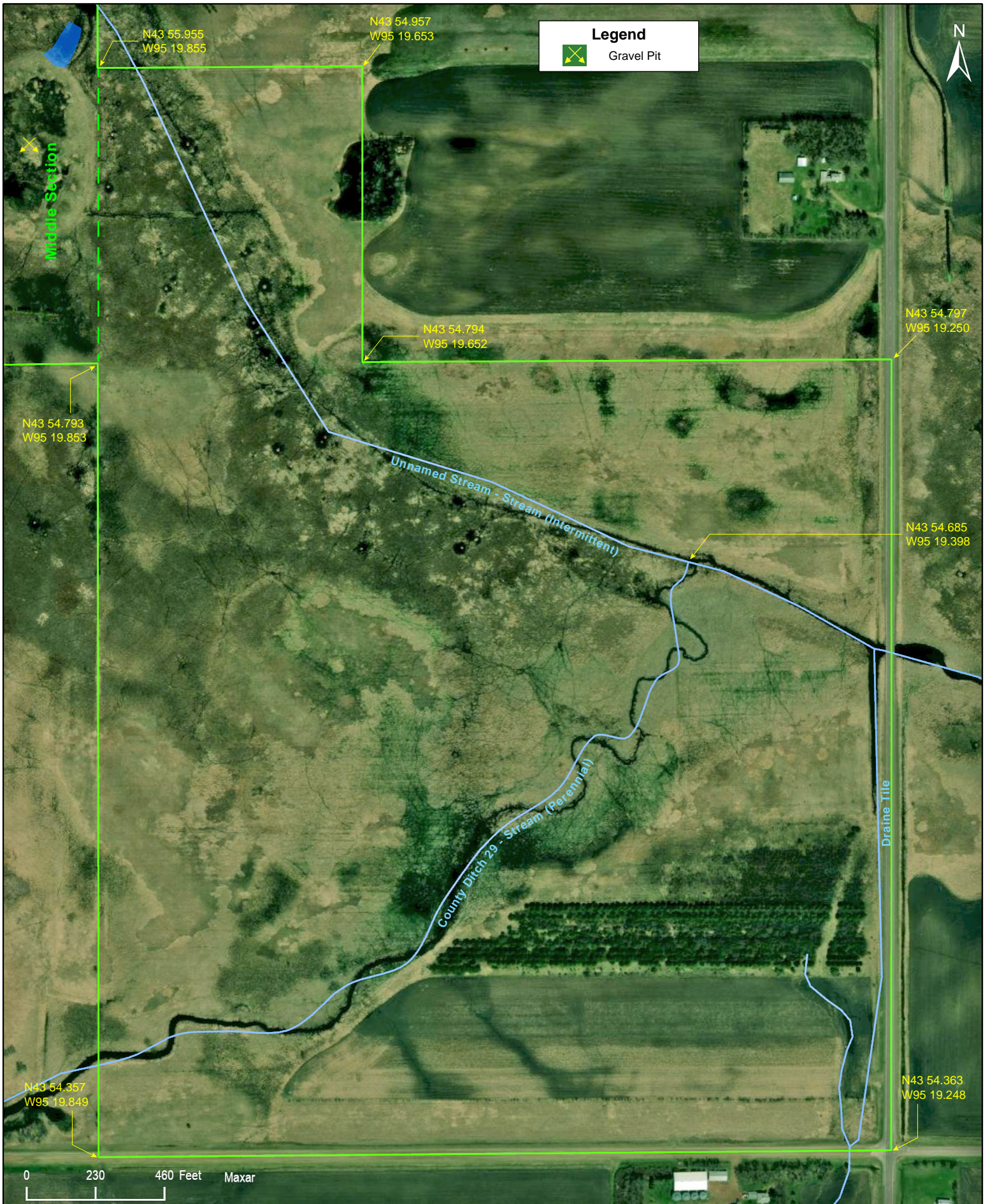


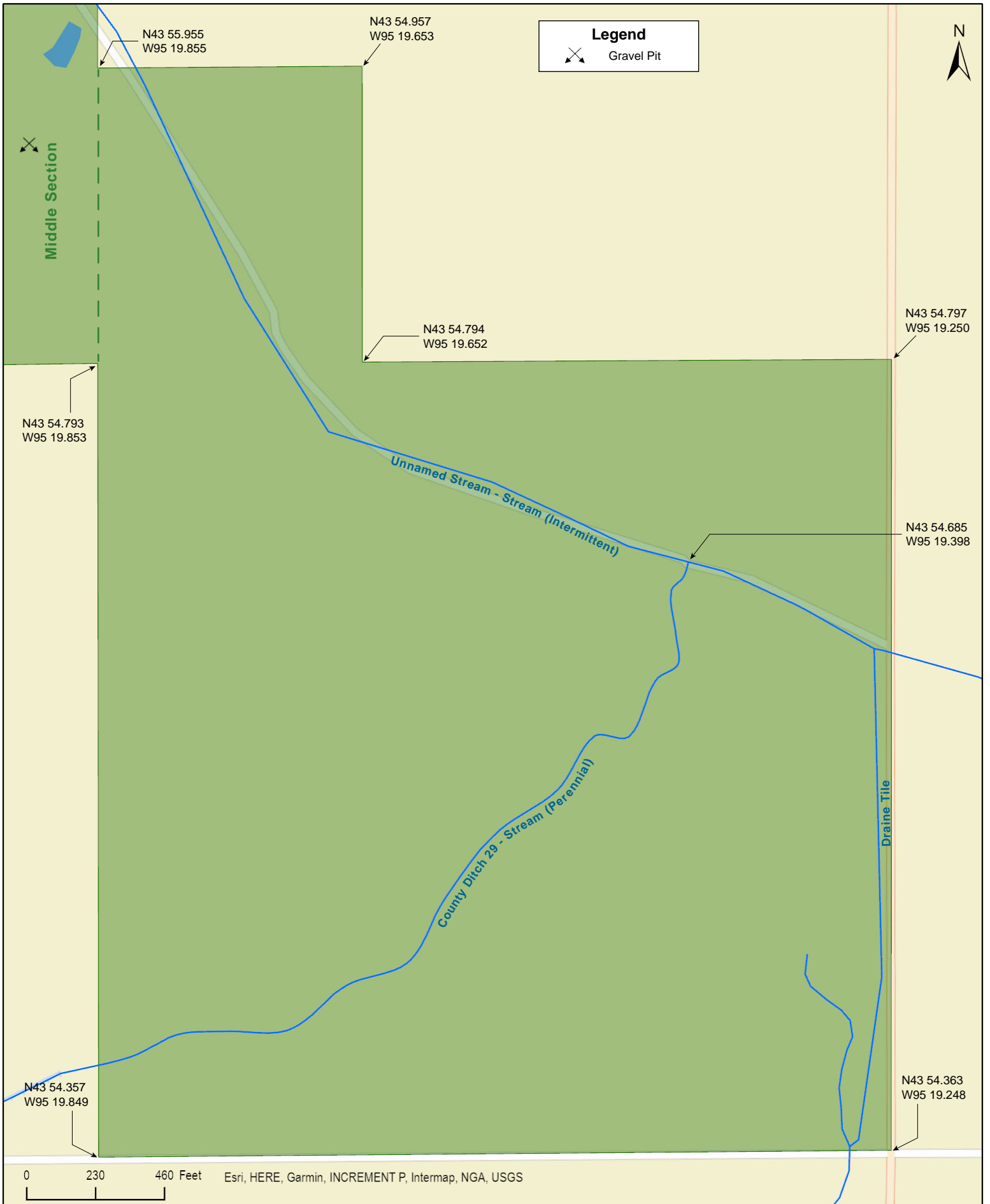
Expandere WMA South Unit, South Section

Cottonwood County



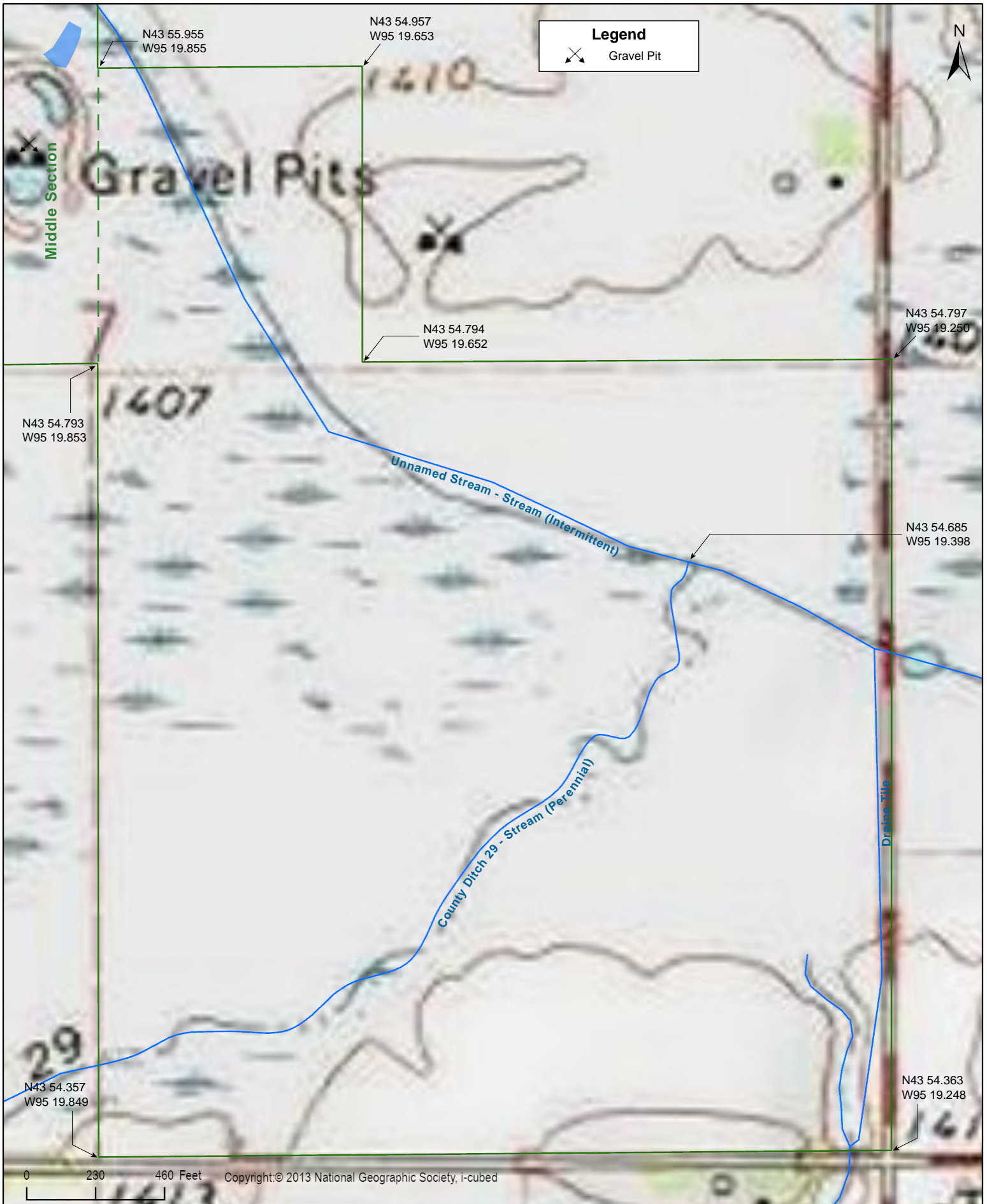
Expandere WMA South Unit, South Section

Cottonwood County

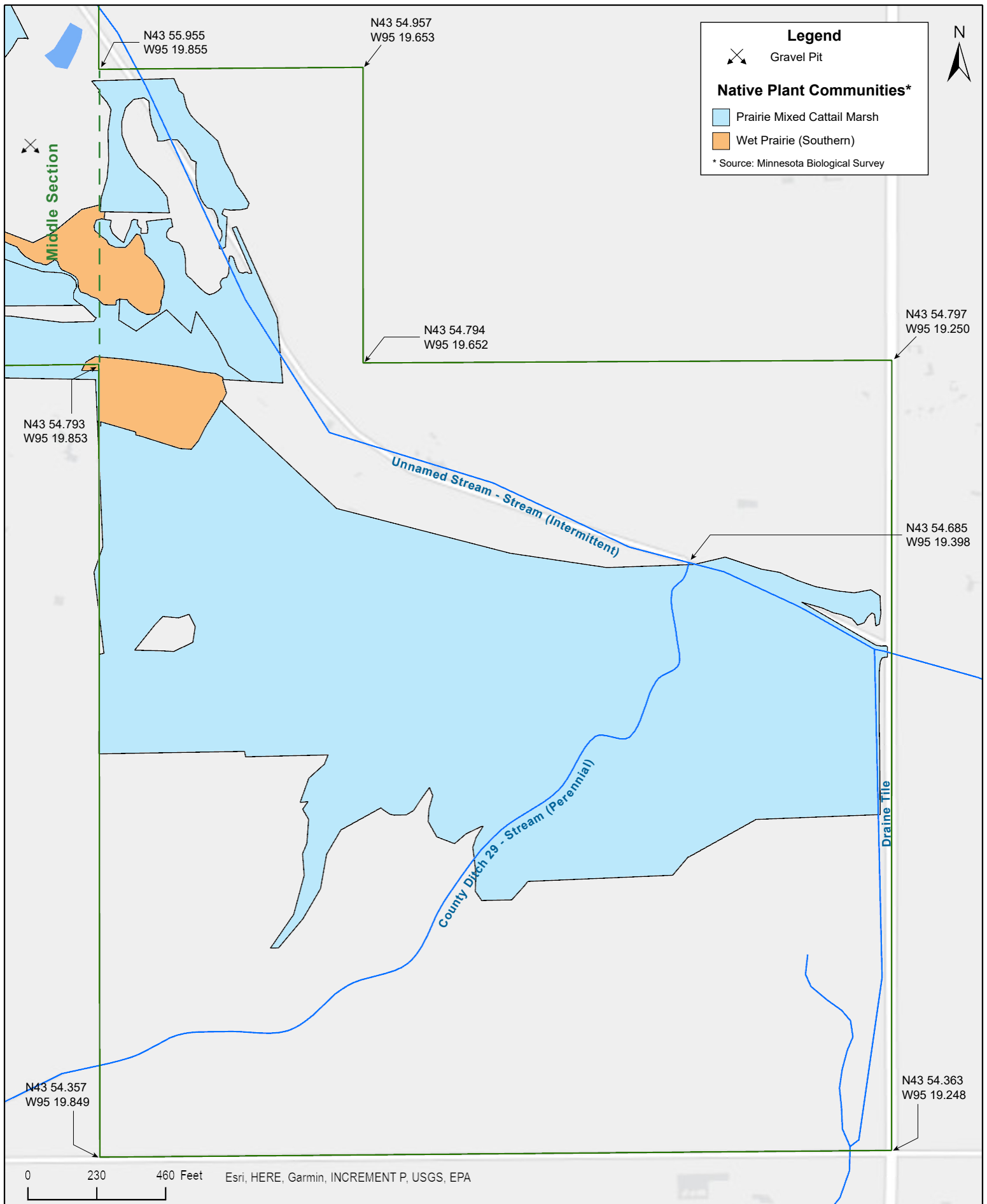


Expandere WMA South Unit, South Section

Cottonwood County



0 230 460 Feet Copyright: © 2013 National Geographic Society, I-cubed



Legend

X Gravel Pit

Native Plant Communities*

- Prairie Mixed Cattail Marsh
- Wet Prairie (Southern)

* Source: Minnesota Biological Survey



N43 54.357
W95 19.849

N43 55.955
W95 19.855

N43 54.957
W95 19.653

N43 54.794
W95 19.652

N43 54.797
W95 19.250

N43 54.793
W95 19.853

N43 54.685
W95 19.398

N43 54.363
W95 19.248

0 230 460 Feet Esri, HERE, Garmin, INCREMENT P, USGS, EPA

Middle Section

Unnamed Stream - Stream (Intermittent)

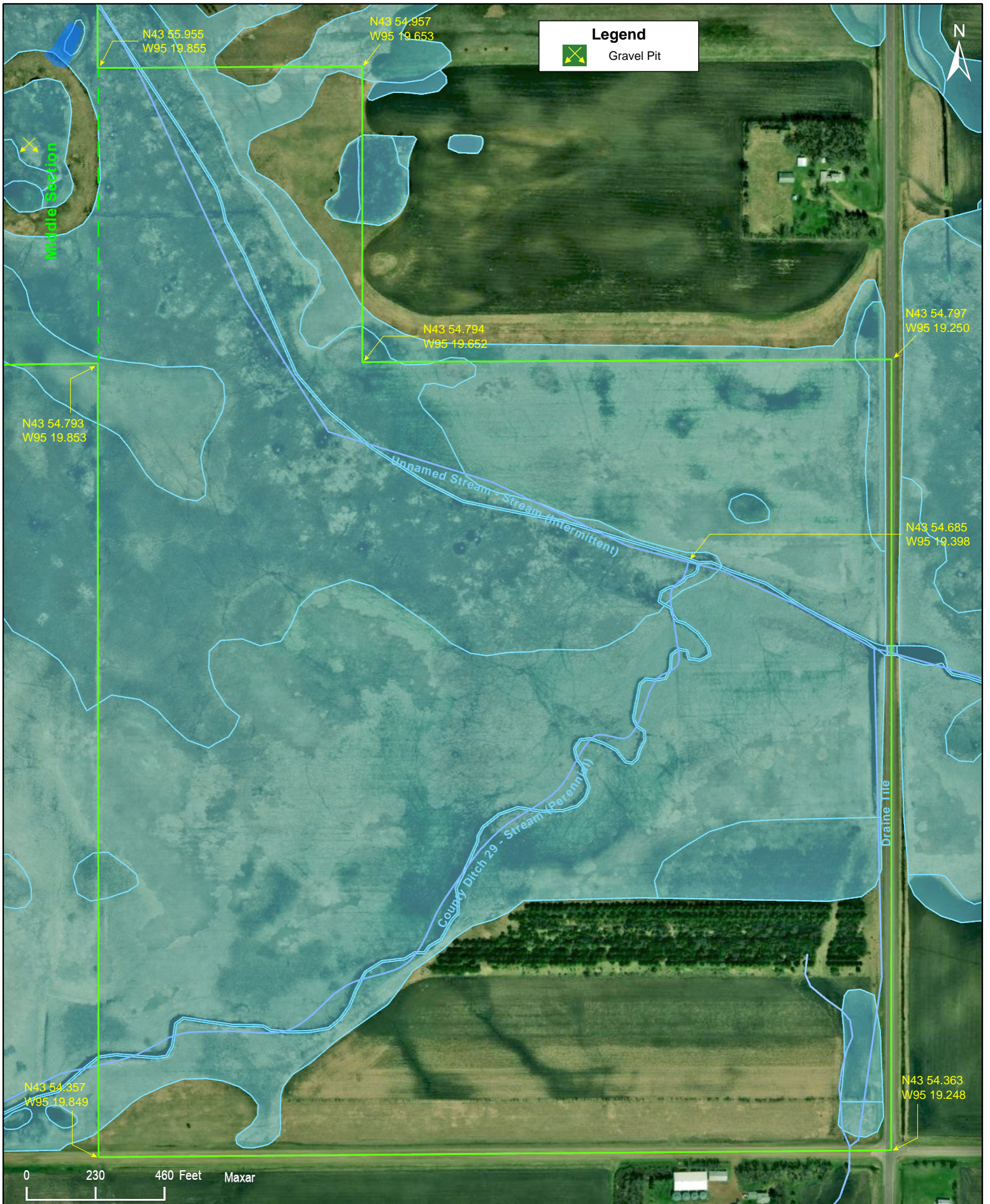
County Ditch 29 - Stream (Perennial)

Drainage Tile

Expandere WMA South Unit, South Section

National Wetlands Inventory

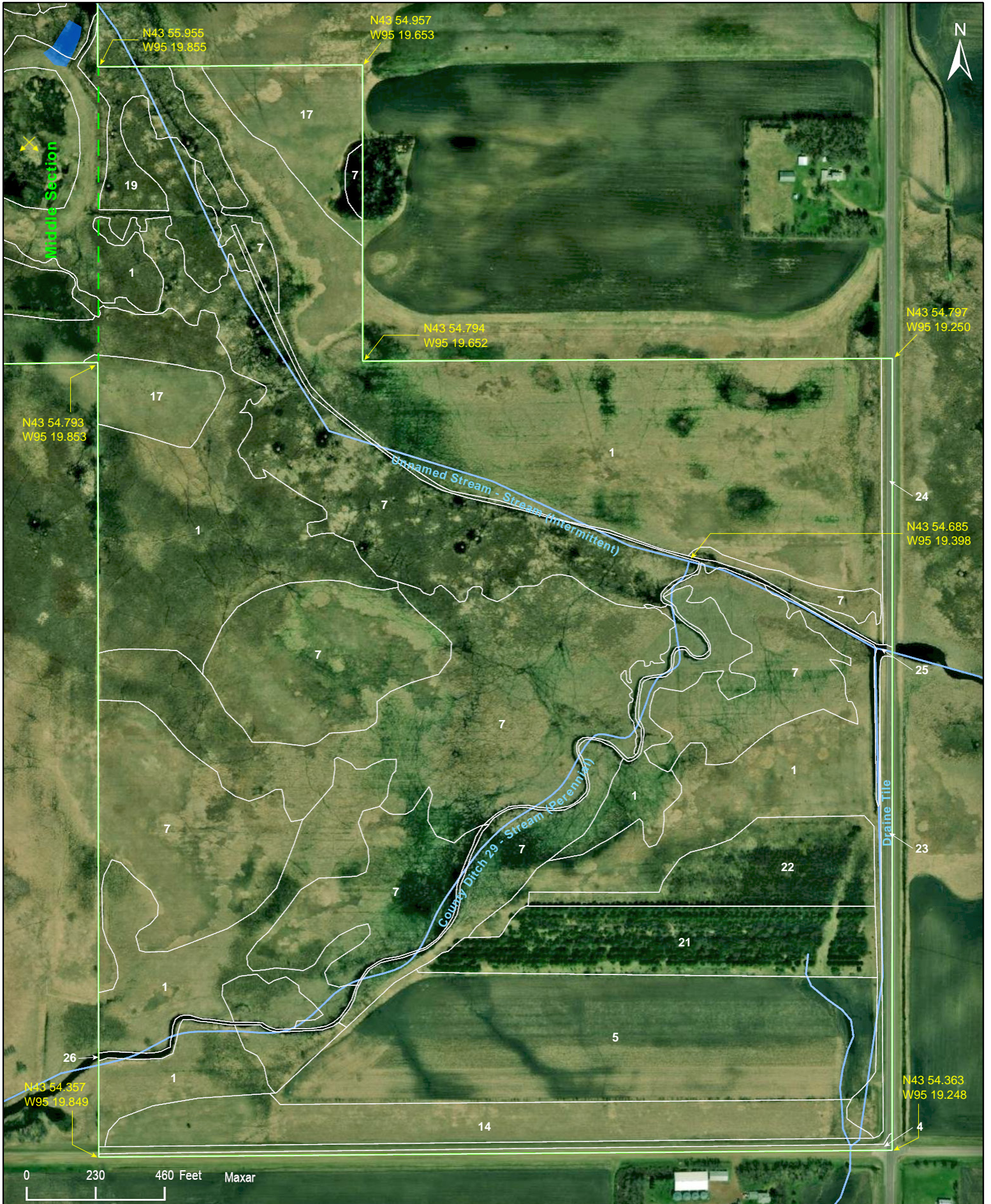
Cottonwood County



Expandere WMA South Unit, South Section


Landcover

Cottonwood County



Expandere WMA South Unit, South Section

Cottonwood County

Legend	
	Gravel Pit
Landcover	
1 Wet prairie - saturated soils	14 Tall grassland - planted local genotype native grasses with forbs
2 Saturated non-native dominated graminoid vegetation	15 Medium-tall grassland - planted local genotype native grasses with forbs
3 Poor fen	16 Seasonally flooded emergent vegetation [pemc]
4 Medium-tall non-native dominated grassland	17 Mesic prairie
5 Crop Rotation Involving Tillage by Cooperative Farming Agreement/Lease	18 Mixed emergent marsh - intermittently exposed soils
6 Upland soils with planted or cultivated mixed coniferous-deciduous shrub/Vine vegetation	19 Mixed emergent marsh
7 Mixed emergent marsh - seasonally flooded	20 Tall grassland
8 Upland soils with planted or cultivated mixed coniferous-deciduous shrub/Vine vegetation	21 Planted or cultivated mixed coniferous-deciduous shrub/Vine vegetation
9 Wet brush-prairie	22 Artificially flooded or saturated soils
10 Open water	23 Exposed earth
11 Dry prairie	24 Medium-tall grassland
12 Artificial surfaces with perennial grasses	25 Semipermanently flooded emergent vegetation [pemf, l2em2f]
13 Seasonally flooded non-native dominated emergent vegetation	26 Permanently flooded emergent vegetation [l2em2h]

Expandere WMA South Unit, South Section

Directions and Notes from Minnesota DNR

From Storden, go 8 miles S on CSAH 5 then 1 mile W on TWN RD.

Notes from MinnesotaSeasons.com

Parking

There is no parking lot or designated parking area for this WMA. Directions on the DNR Website lead to these coordinates on 390th St.

390th St.
N43 55.222, W95 20.423

There is a 100-yard "DNR Management Road open to Public Foot Travel" on 390th St. just west of 360th Ave.

DNR Management Road
N43 55.222, W95 21.713

DISCLAIMER OF WARRANTIES AND LIMITATIONS OF LIABILITY

MinnesotaSeasons.com, The Nature Conservancy, U.S. Department of Agriculture, Forest Service, U.S. Fish and Wildlife Service, the state of Minnesota, the Minnesota Department of Natural Resources, and their employees, make no representations or warranties, express or implied, with respect to the use of or reliance on the data provided herewith, regardless of its format or means of transmission. There are no guarantees or representations to the user as to the accuracy, currency, completeness, suitability or reliability of this data for any purpose. THE USER ACCEPTS THE DATA AND/OR SOFTWARE "AS IS" AND ASSUMES ALL RISKS ASSOCIATED WITH ITS USE.

IN NO EVENT SHALL MINNESOTASEASONS.COM, TNC, USDA-FS, USFWS, OR MNDNR BE LIABLE FOR ANY DIRECT, INDIRECT, INCIDENTAL, SPECIAL, EXEMPLARY, OR CONSEQUENTIAL DAMAGES (INCLUDING, BUT NOT LIMITED TO, PROCUREMENT OF SUBSTITUTE GOODS OR SERVICES; LOSS OF USE, DATA, OR PROFITS; OR BUSINESS INTERRUPTION) HOWEVER CAUSED AND ON ANY THEORY OF LIABILITY, WHETHER IN CONTRACT, STRICT LIABILITY, OR TORT (INCLUDING NEGLIGENCE OR OTHERS) ARISING IN ANY WAY OUT OF THE USE OF THIS DATA, EVEN IF ADVISED OF THE POSSIBILITY OF SUCH DAMAGE OR FOR ANY CLAIM BY ANY OTHER PARTY.

Your use of the data is acceptance on your part of the terms and conditions set forth herein.