

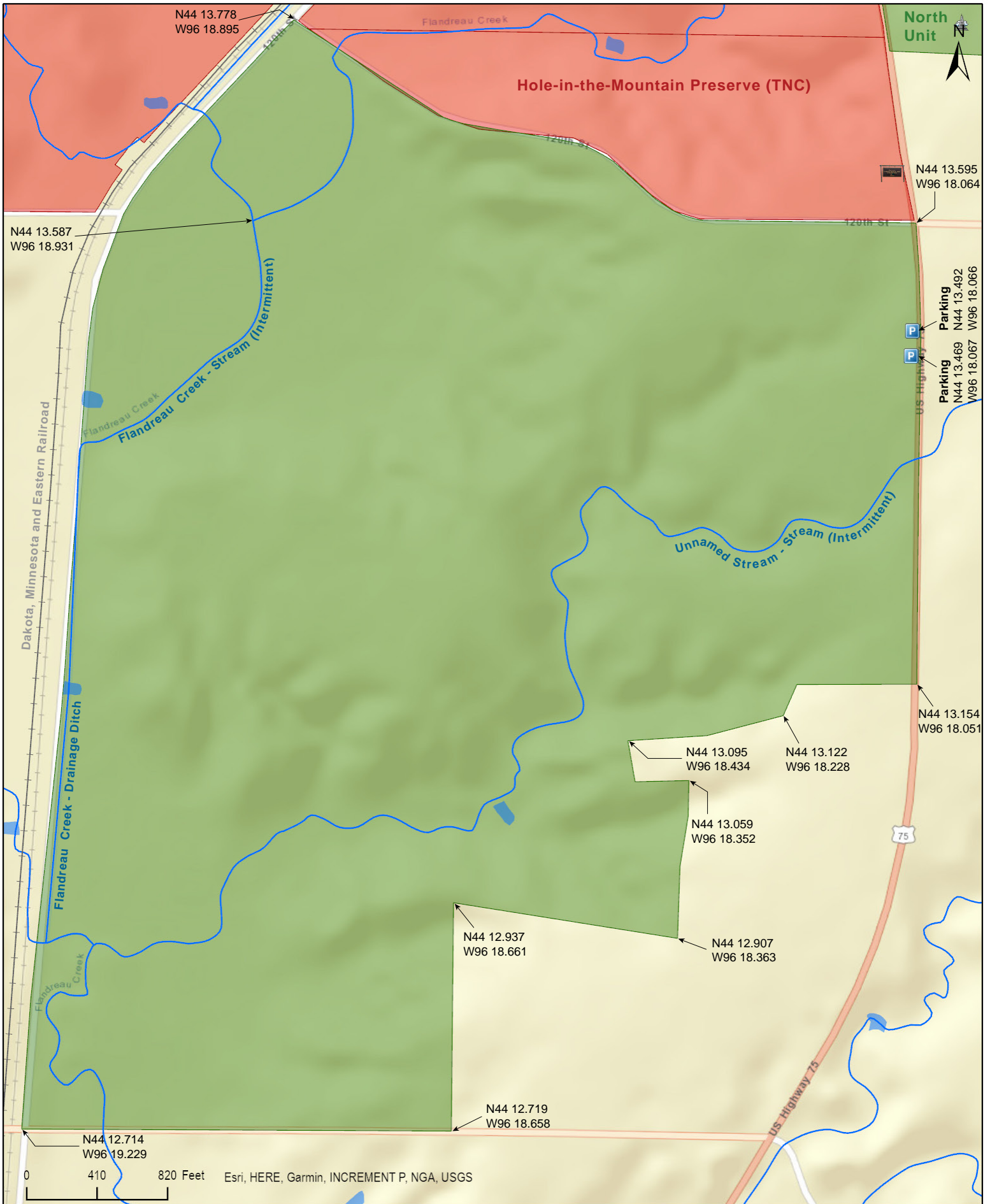
Hole-in-Mountain WMA South Unit

Lincoln County



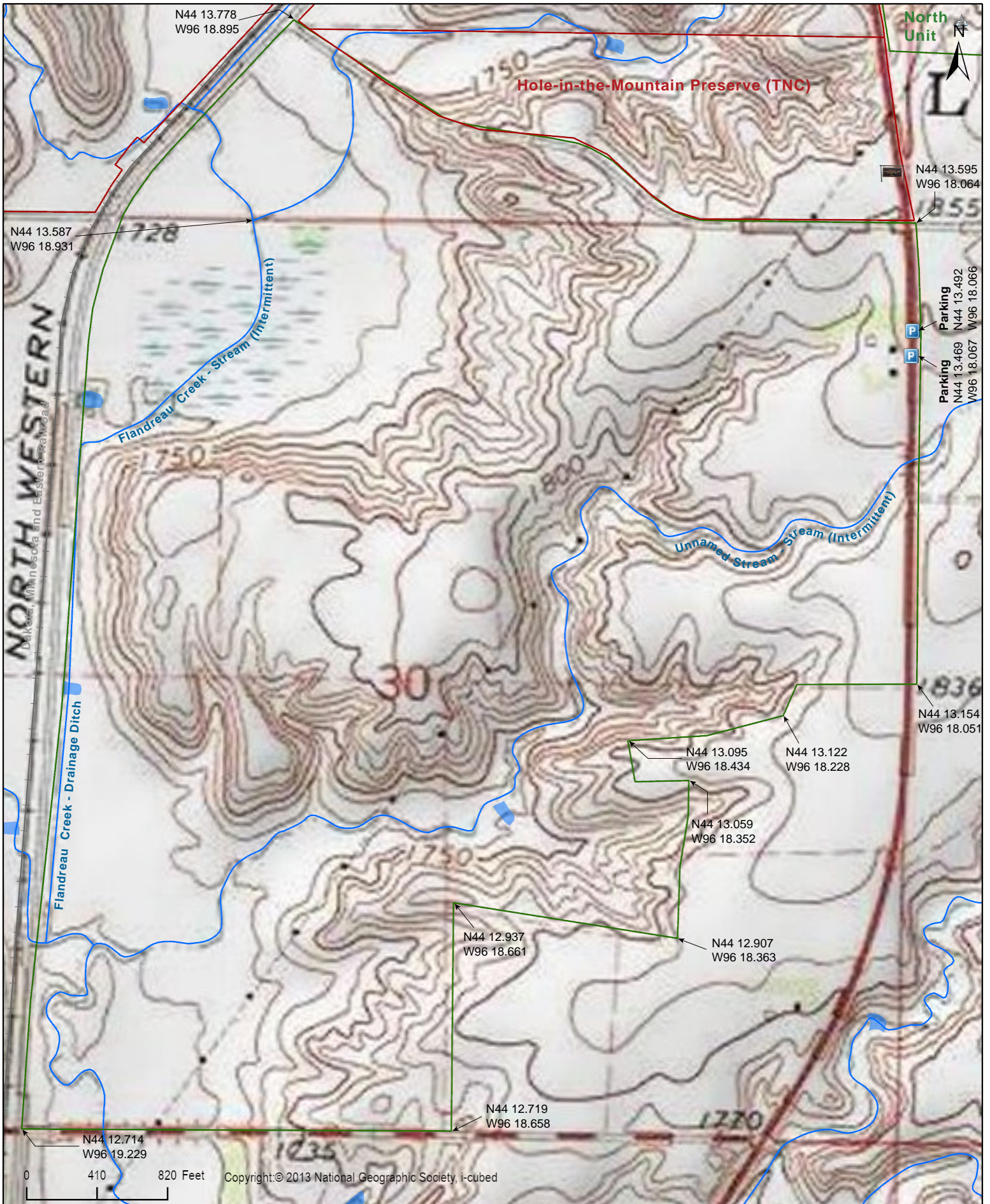
Hole-in-Mountain WMA South Unit

Lincoln County



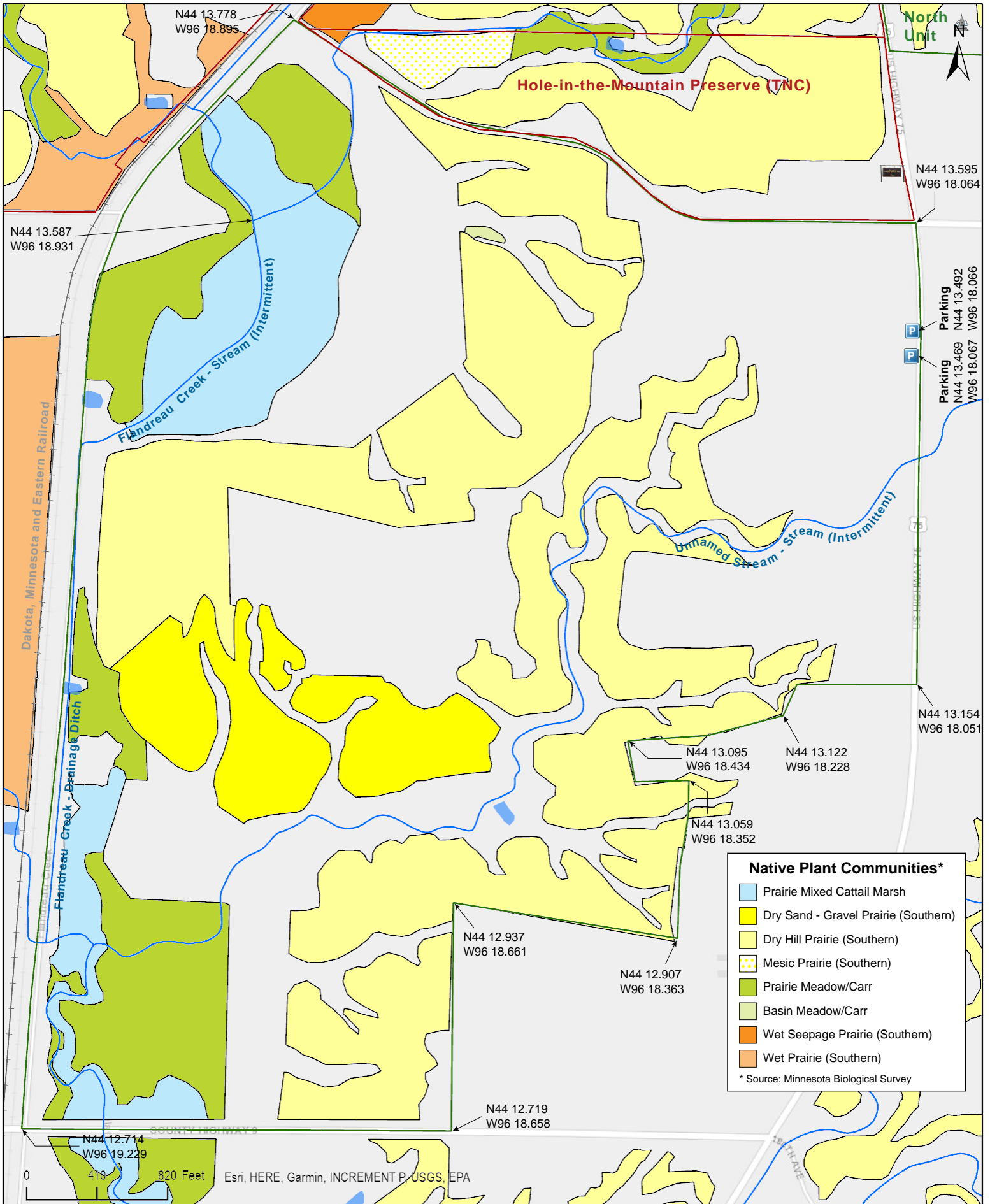
Hole-in-Mountain WMA South Unit

Lincoln County



Hole-in-Mountain WMA South Unit

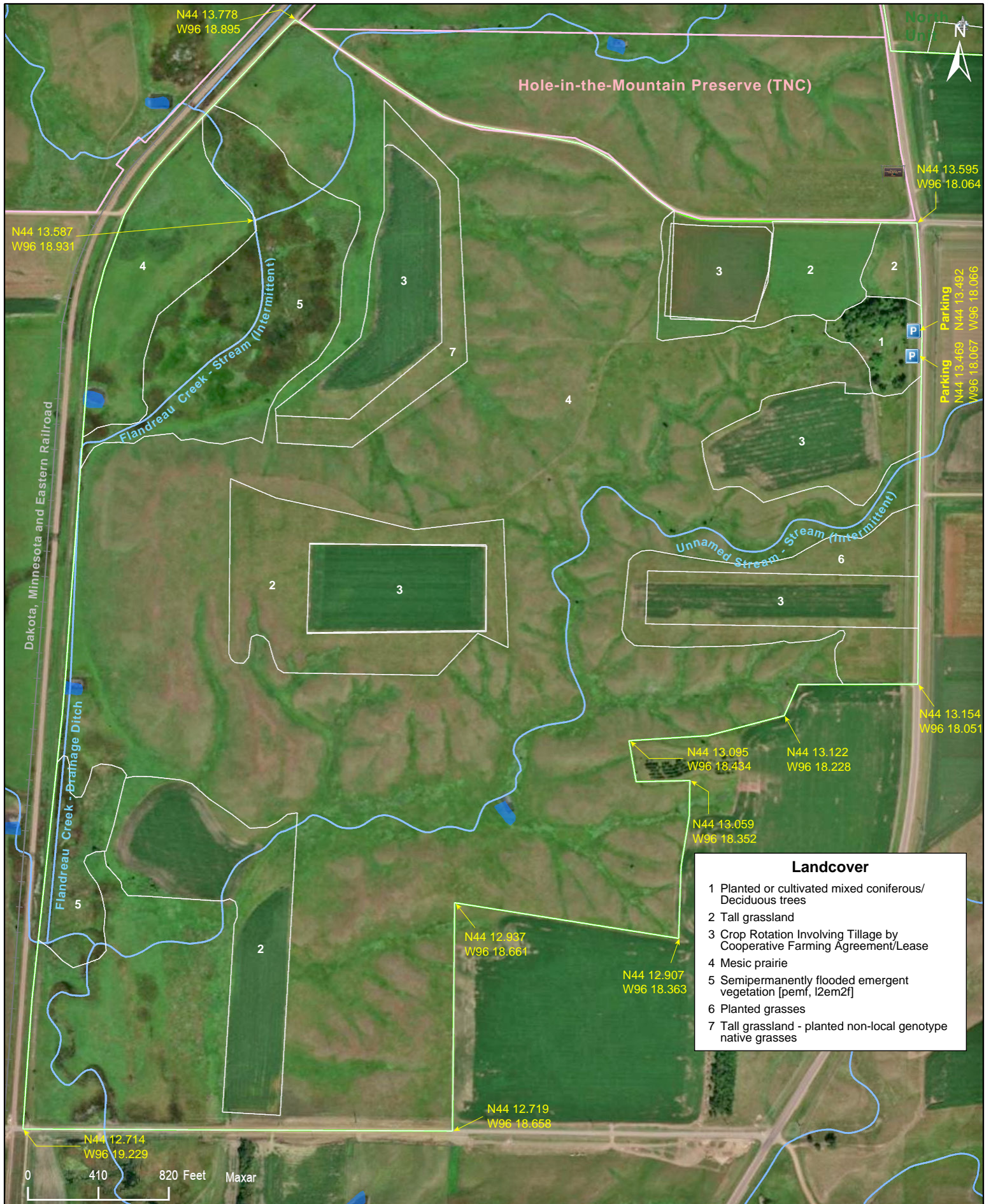
Lincoln County



Hole-in-Mountain WMA South Unit

Landcover

Lincoln County



Landcover	
1	Planted or cultivated mixed coniferous/Deciduous trees
2	Tall grassland
3	Crop Rotation Involving Tillage by Cooperative Farming Agreement/Lease
4	Mesic prairie
5	Sempermanently flooded emergent vegetation [pemf, l2em2f]
6	Planted grasses
7	Tall grassland - planted non-local genotype native grasses



Hole-in-Mountain WMA South Unit

National Wetlands Inventory

Lincoln County



Hole-in-Mountain WMA South Unit

Directions and Notes from Minnesota DNR

Directions

From Lake Benton, go 2 miles S on US 75

Description

This WMA consists of two separate tracts that are grass/open lands mixed with some wetlands and some native prairie.

Notes from MinnesotaSeasons.com

Parking

There are two field accesses/pull-offs at the east boundary of the South Unit on US Hwy 75:

N44 13.492, W96 18.066

N44 13.469, W96 18.067

DISCLAIMER OF WARRANTIES AND LIMITATIONS OF LIABILITY

MinnesotaSeasons.com, The Nature Conservancy, U.S. Department of Agriculture, Forest Service, U.S. Fish and Wildlife Service, the state of Minnesota, the Minnesota Department of Natural Resources, and their employees, make no representations or warranties, express or implied, with respect to the use of or reliance on the data provided herewith, regardless of its format or means of transmission. There are no guarantees or representations to the user as to the accuracy, currency, completeness, suitability or reliability of this data for any purpose. **THE USER ACCEPTS THE DATA AND/OR SOFTWARE "AS IS" AND ASSUMES ALL RISKS ASSOCIATED WITH ITS USE.**

IN NO EVENT SHALL MINNESOTASEASONS.COM, TNC, USDA-FS, USFWS, OR MNDNR BE LIABLE FOR ANY DIRECT, INDIRECT, INCIDENTAL, SPECIAL, EXEMPLARY, OR CONSEQUENTIAL DAMAGES (INCLUDING, BUT NOT LIMITED TO, PROCUREMENT OF SUBSTITUTE GOODS OR SERVICES; LOSS OF USE, DATA, OR PROFITS; OR BUSINESS INTERRUPTION) HOWEVER CAUSED AND ON ANY THEORY OF LIABILITY, WHETHER IN CONTRACT, STRICT LIABILITY, OR TORT (INCLUDING NEGLIGENCE OR OTHERS) ARISING IN ANY WAY OUT OF THE USE OF THIS DATA, EVEN IF ADVISED OF THE POSSIBILITY OF SUCH DAMAGE OR FOR ANY CLAIM BY ANY OTHER PARTY.

Your use of the data is acceptance on your part of the terms and conditions set forth herein.