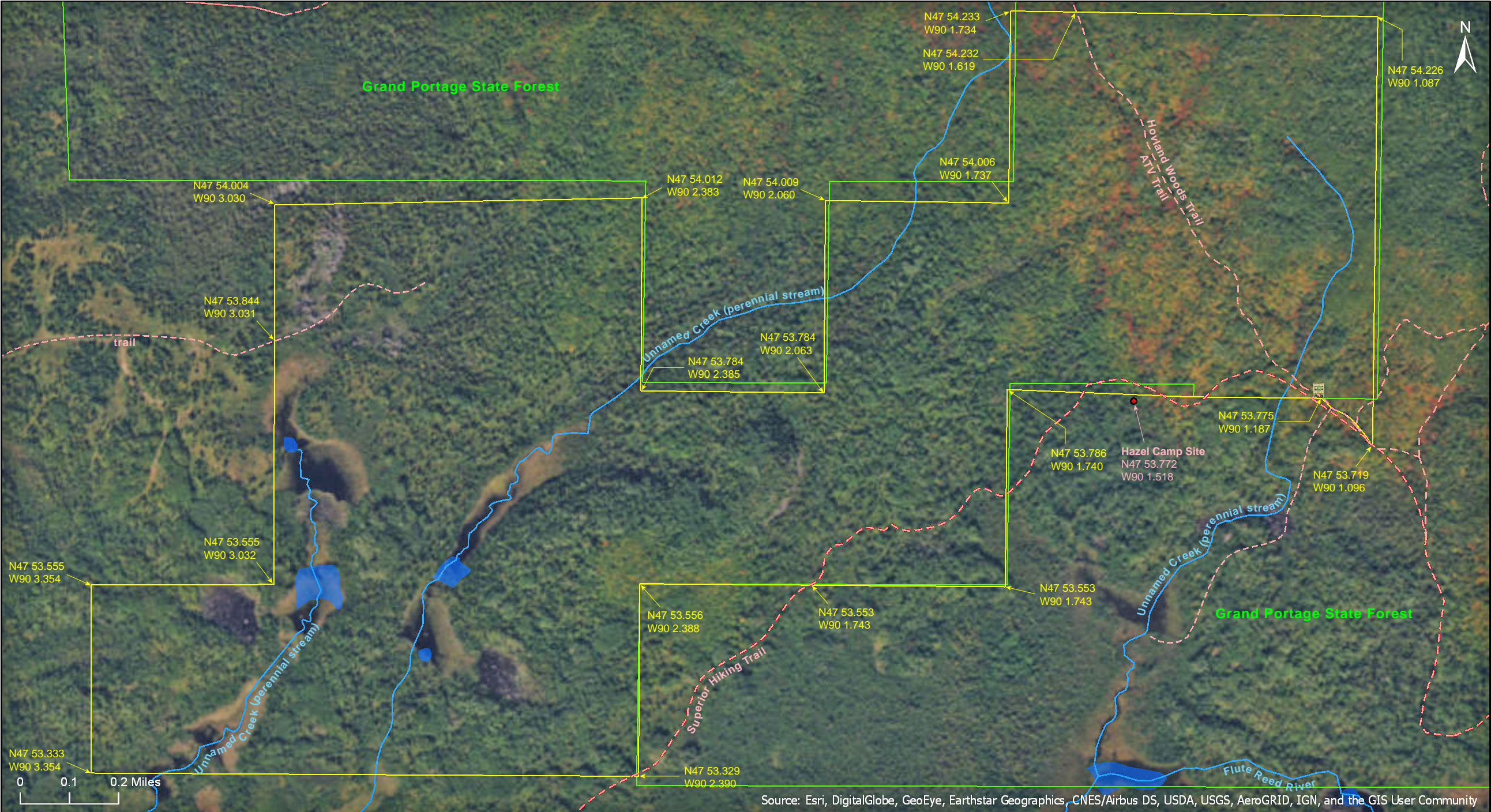


# Hovland Woods SNA South Unit

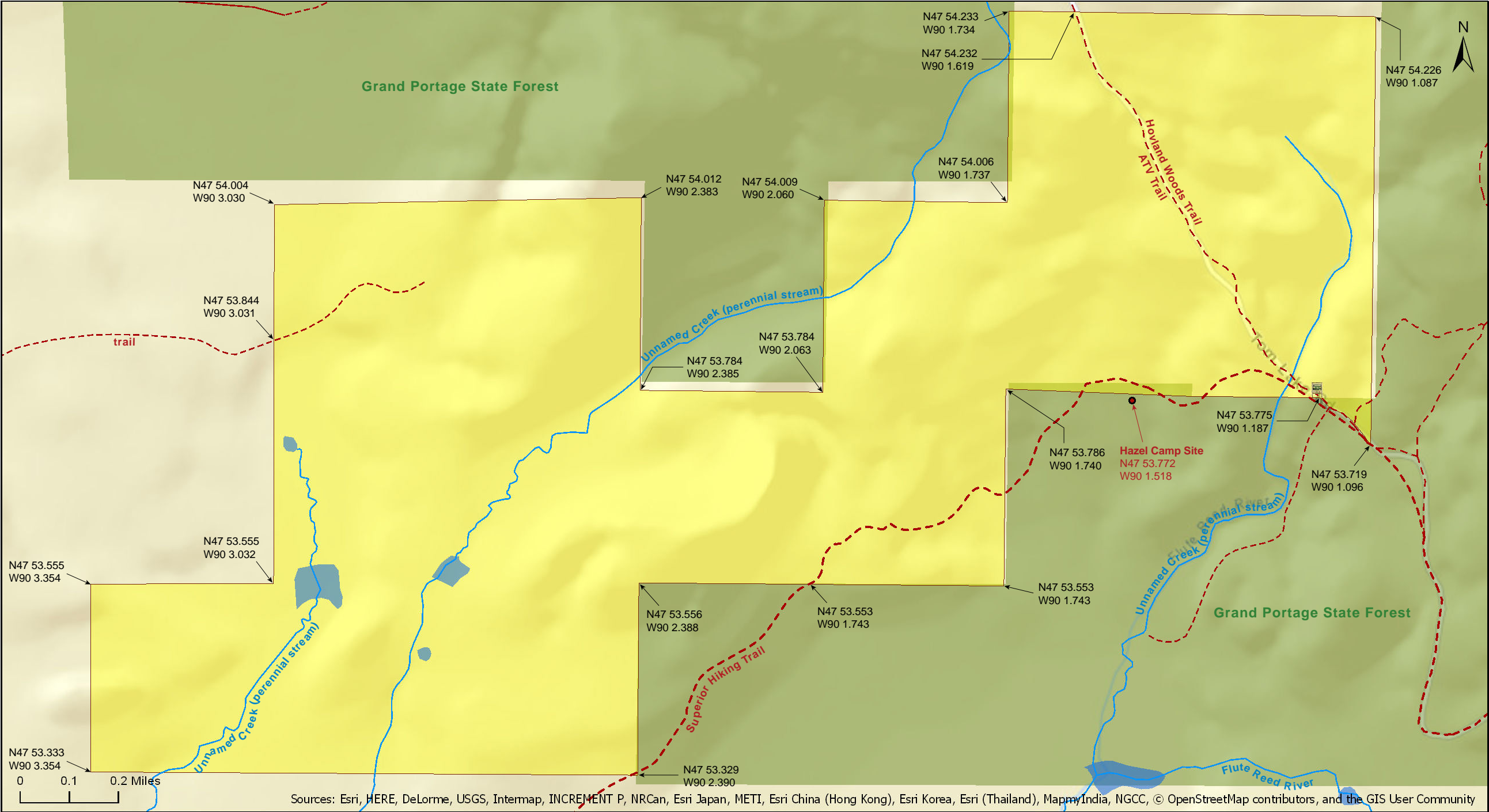
Cook County



Source: Esri, DigitalGlobe, GeoEye, Earthstar Geographics, CNES/Airbus DS, USDA, USGS, AeroGRID, IGN, and the GIS User Community

# Hovland Woods SNA South Unit

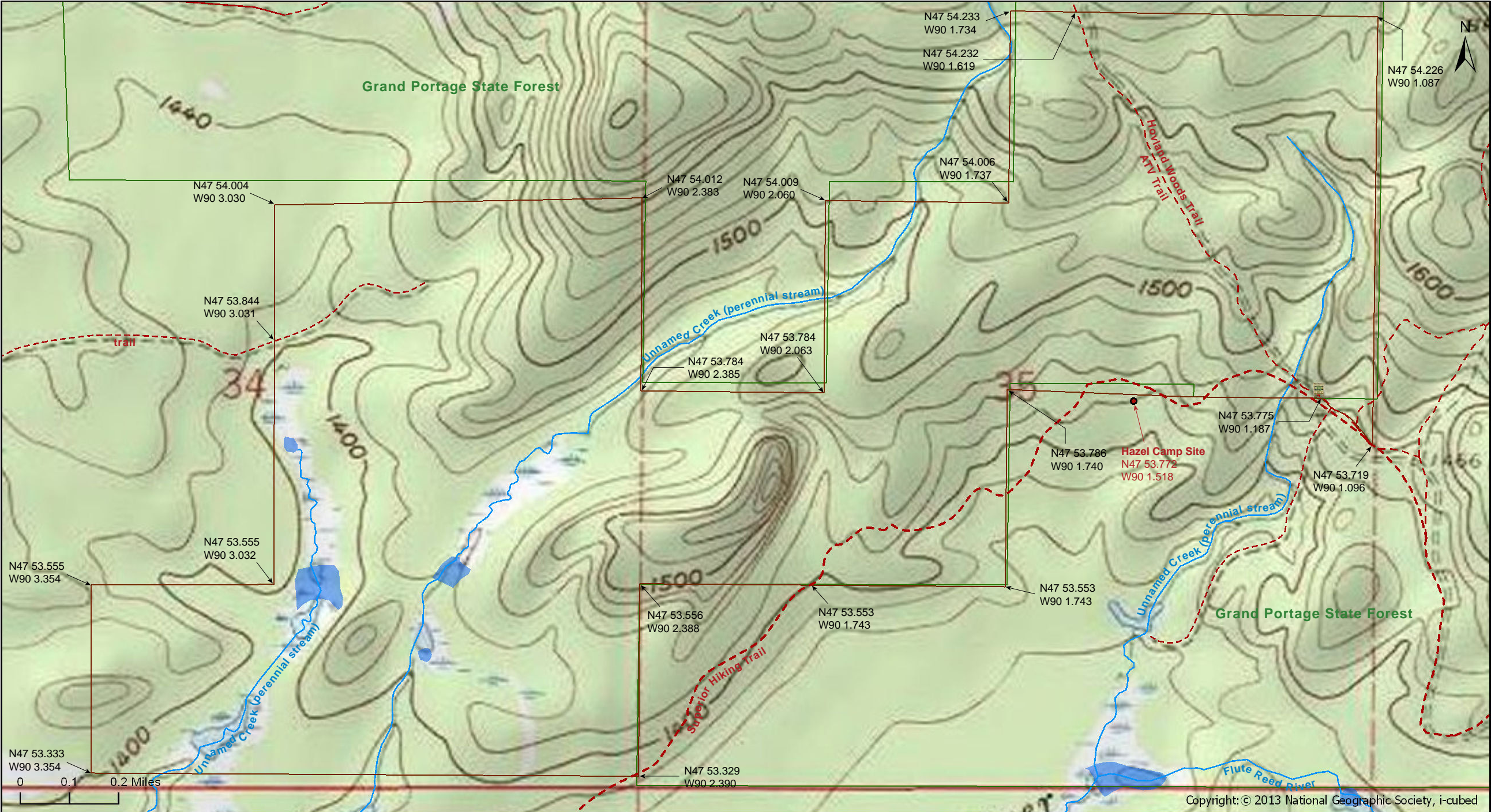
Cook County



Sources: Esri, HERE, DeLorme, USGS, Intermap, INCREMENT P, NRCan, Esri Japan, METI, Esri China (Hong Kong), Esri Korea, Esri (Thailand), MapmyIndia, NGCC, © OpenStreetMap contributors, and the GIS User Community

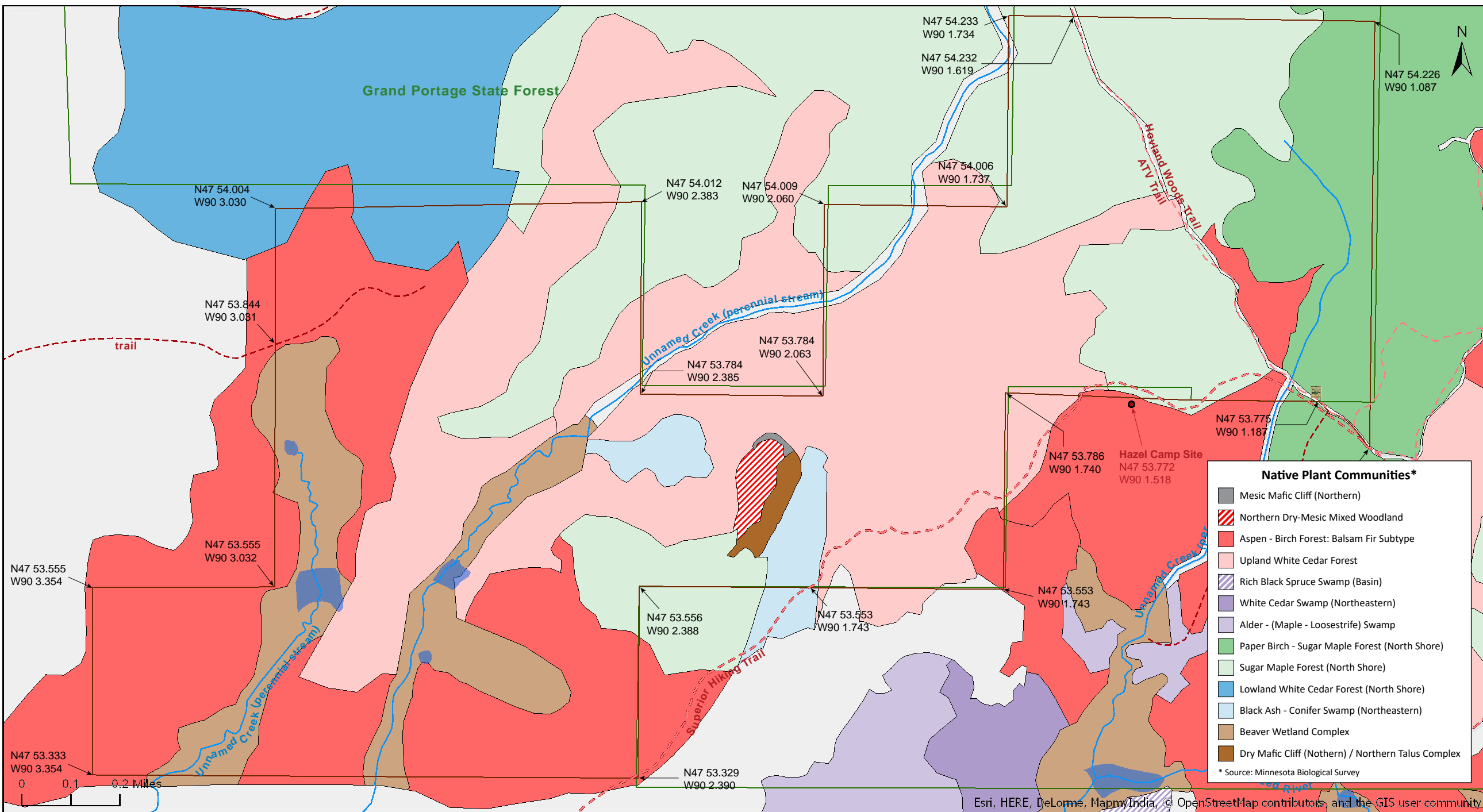
# Hovland Woods SNA South Unit

Cook County

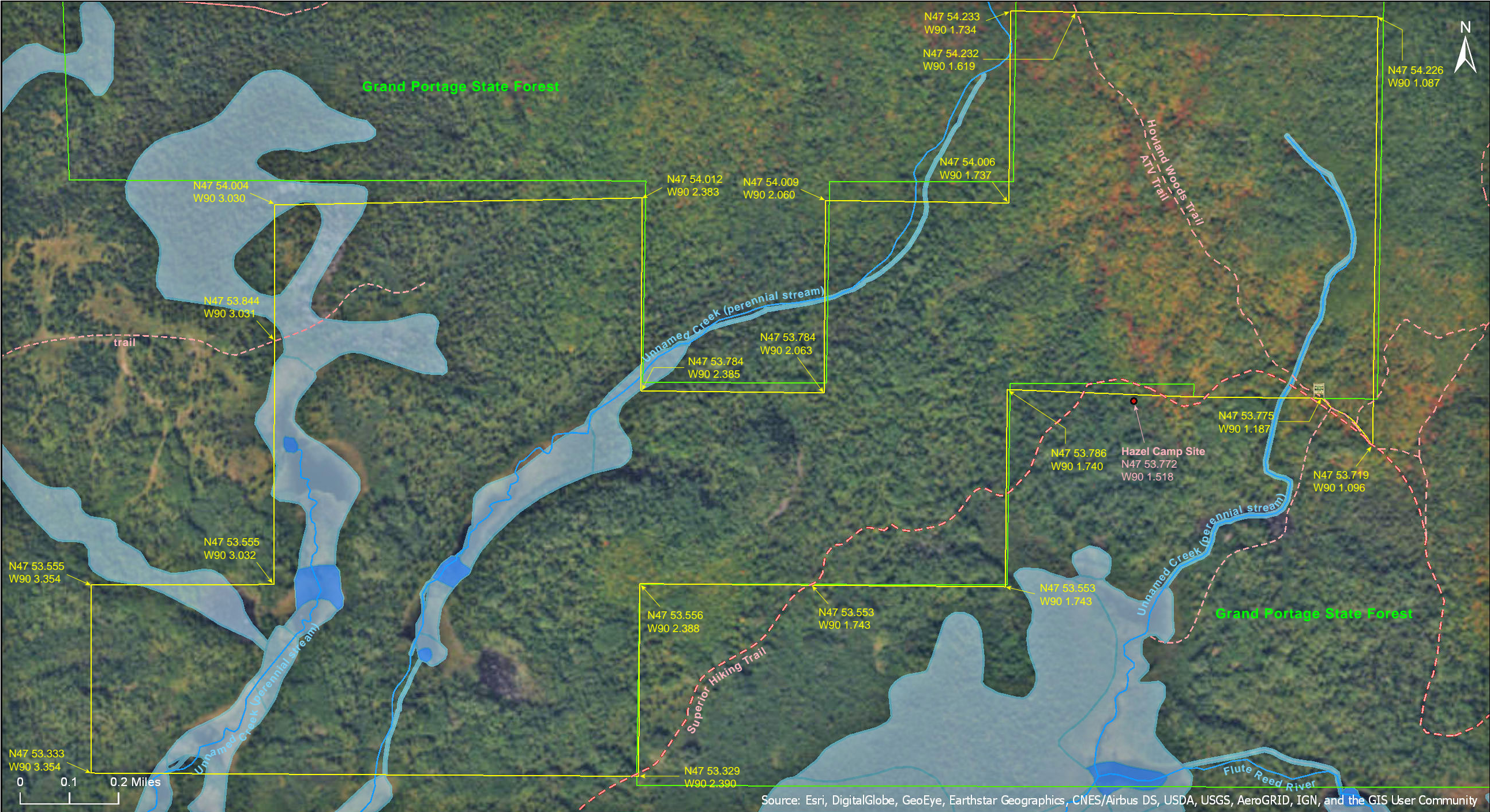


# Hovland Woods SNA South Unit

Cook County



# Hovland Woods SNA South Unit



Source: Esri, DigitalGlobe, GeoEye, Earthstar Geographics, CNES/Airbus DS, USDA, USGS, AeroGRID, IGN, and the GIS User Community

# Hovland Woods SNA

## South Unit

### Directions and Notes from Minnesota DNR

#### **North Unit**

**Directions:** From Hovland 6.7 miles on Co Rd 16, then 1.2 miles W on Irish Creek Rd. Park in lot at junction of Boyd Rd. Hike 0.8 mile on Boyd Rd into site. Boyd Rd is also used by ATVs and dogsleds. GPS recommended.

**Lat/Lon:** 47.935775, -89.998817

**Notes:** In winter Tower Road, Tom Lake Road, Boyd Trail, the Stevens Lake Spur are used by snowmobiles and/or dogsleds.

#### **South Unit**

**Directions:** From Hovland 0.2 miles N on Co Rd 16, then 2.6 miles W on Co Rd 69 (North Rd), then 4.6 miles NE on Co Rd 70 (Camp 20 Rd) Stay right at Y. In 0.25 mile park at Superior Hiking Trail lot on right. Hike trail 1.2 miles E to site. GPS recommended.

**Lat/Lon:** 47.884298, -90.060867

**Notes:** The road and lot may not be plowed in winter.

The Superior Hiking Trail passes through site.... This site is within Grand Portage State Forest.

Minnesota's natural resources are threatened by a number of invasive species; be informed and help keep them from spreading to natural areas.

### Notes from MinnesotaSeasons.com

#### **Parking**

##### **North Unit (Boyd Rd)**

N47 56.147, W89 59.929

##### **South Unit (Camp 20 Rd)**

N47 53.058, W90 3.652

#### **Hiking Trails**

There are several roads and trails in the North Unit. The Hovland Woods Trail is a 16-mile ATV trail. It forms a loop that passes through both units of Hovland Woods SNA. It is open to ATVs from May 15 to November 30, to hikers year round.

**North Unit:** The Hovland Woods Trail follows Boyd Road, a light duty dirt road, from the north parking area 0.83 miles to the north boundary of the SNA; 2.26 miles to the southwest corner of the North Unit; then 0.83 miles to Tom Lake Road, the Superior Hiking Trail, and the South Unit of the SNA. A 0.63-mile spur off the main trail on Boyd Road leads east to Stevens Lake. A minimum maintenance road leads southwest from Boyd Road for 0.68 miles. It ends at a fork with two trails, one leading west into Grand Portage State Forest, the other leading north and back onto the SNA.

**South Unit:** From Tom Lake Road, another light duty dirt road, the Hovland Woods Trail leads northeast following the road 0.71 miles to the north boundary of the South Unit. The Superior Hiking Trail passes through the South Unit for a short distance. The Hazel Campground is adjacent to the south boundary.

### DISCLAIMER OF WARRANTIES AND LIMITATIONS OF LIABILITY

MinnesotaSeasons.com, The Nature Conservancy, U.S. Department of Agriculture, Forest Service, U.S. Fish and Wildlife Service, the state of Minnesota, the Minnesota Department of Natural Resources, and their employees, make no representations or warranties, express or implied, with respect to the use of or reliance on the data provided herewith, regardless of its format or means of transmission. There are no guarantees or representations to the user as to the accuracy, currency, completeness, suitability or reliability of this data for any purpose. THE USER ACCEPTS THE DATA AND/OR SOFTWARE "AS IS" AND ASSUMES ALL RISKS ASSOCIATED WITH ITS USE.

IN NO EVENT SHALL MINNESOTASEASONS.COM, TNC, USDA-FS, USFWS, OR MNDNR BE LIABLE FOR ANY DIRECT, INDIRECT, INCIDENTAL, SPECIAL, EXEMPLARY, OR CONSEQUENTIAL DAMAGES (INCLUDING, BUT NOT LIMITED TO, PROCUREMENT OF SUBSTITUTE GOODS OR SERVICES; LOSS OF USE, DATA, OR PROFITS; OR BUSINESS INTERRUPTION) HOWEVER CAUSED AND ON ANY THEORY OF LIABILITY, WHETHER IN CONTRACT, STRICT LIABILITY, OR TORT (INCLUDING NEGLIGENCE OR OTHERS) ARISING IN ANY WAY OUT OF THE USE OF THIS DATA, EVEN IF ADVISED OF THE POSSIBILITY OF SUCH DAMAGE OR FOR ANY CLAIM BY ANY OTHER PARTY.

Your use of the data is acceptance on your part of the terms and conditions set forth herein.