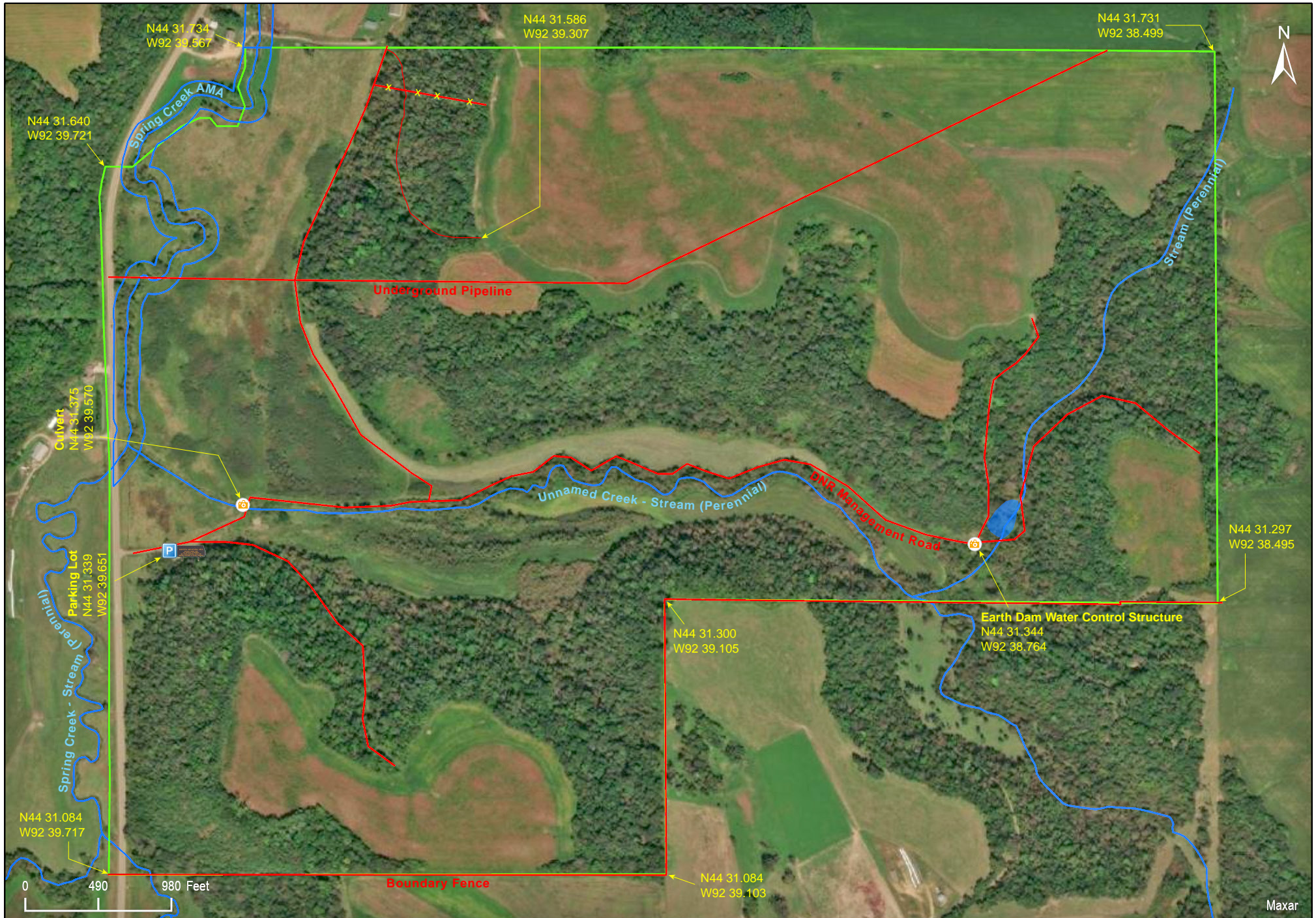


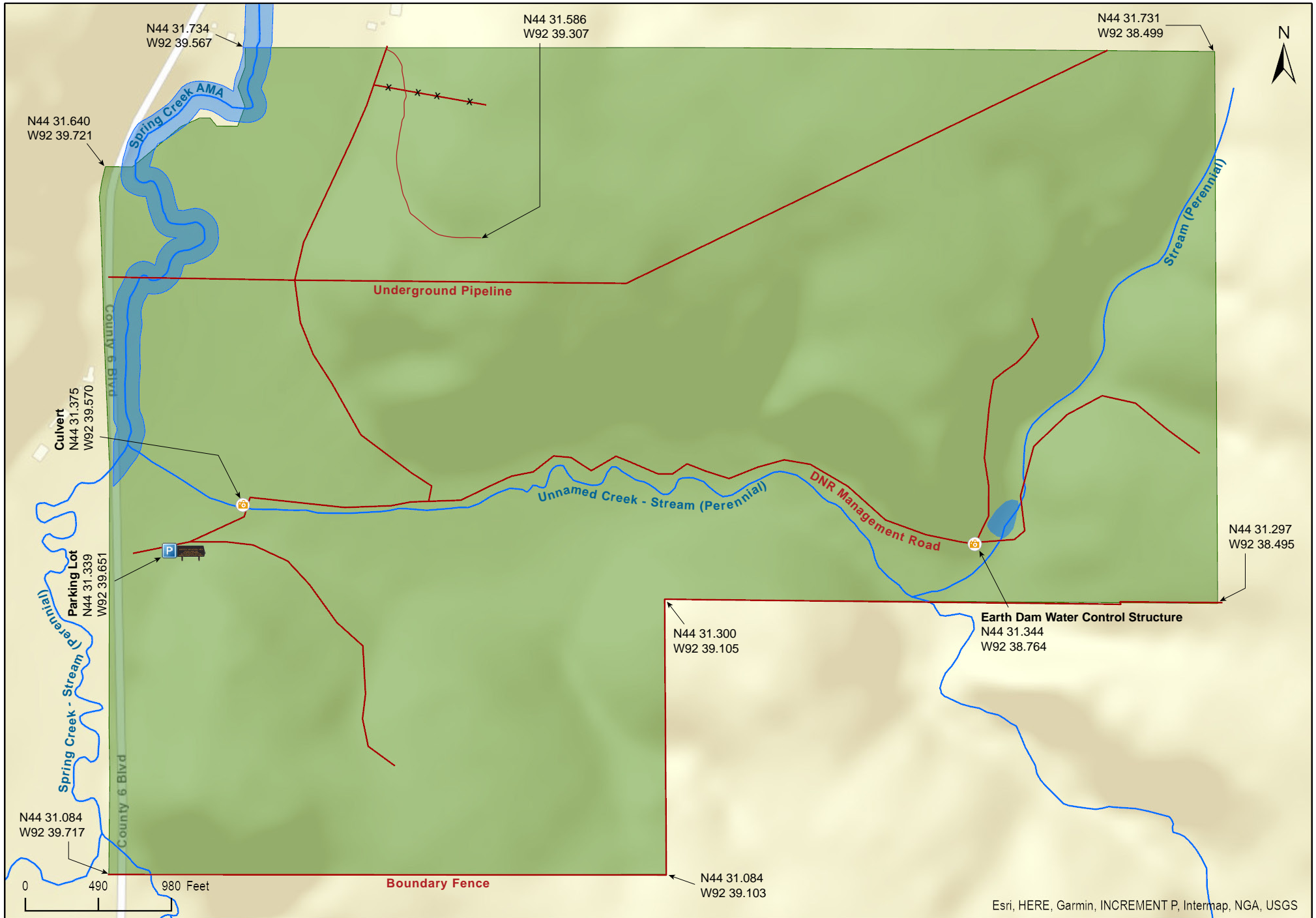
John Peter Hoffman Spring Brook Valley WMA

Goodhue County



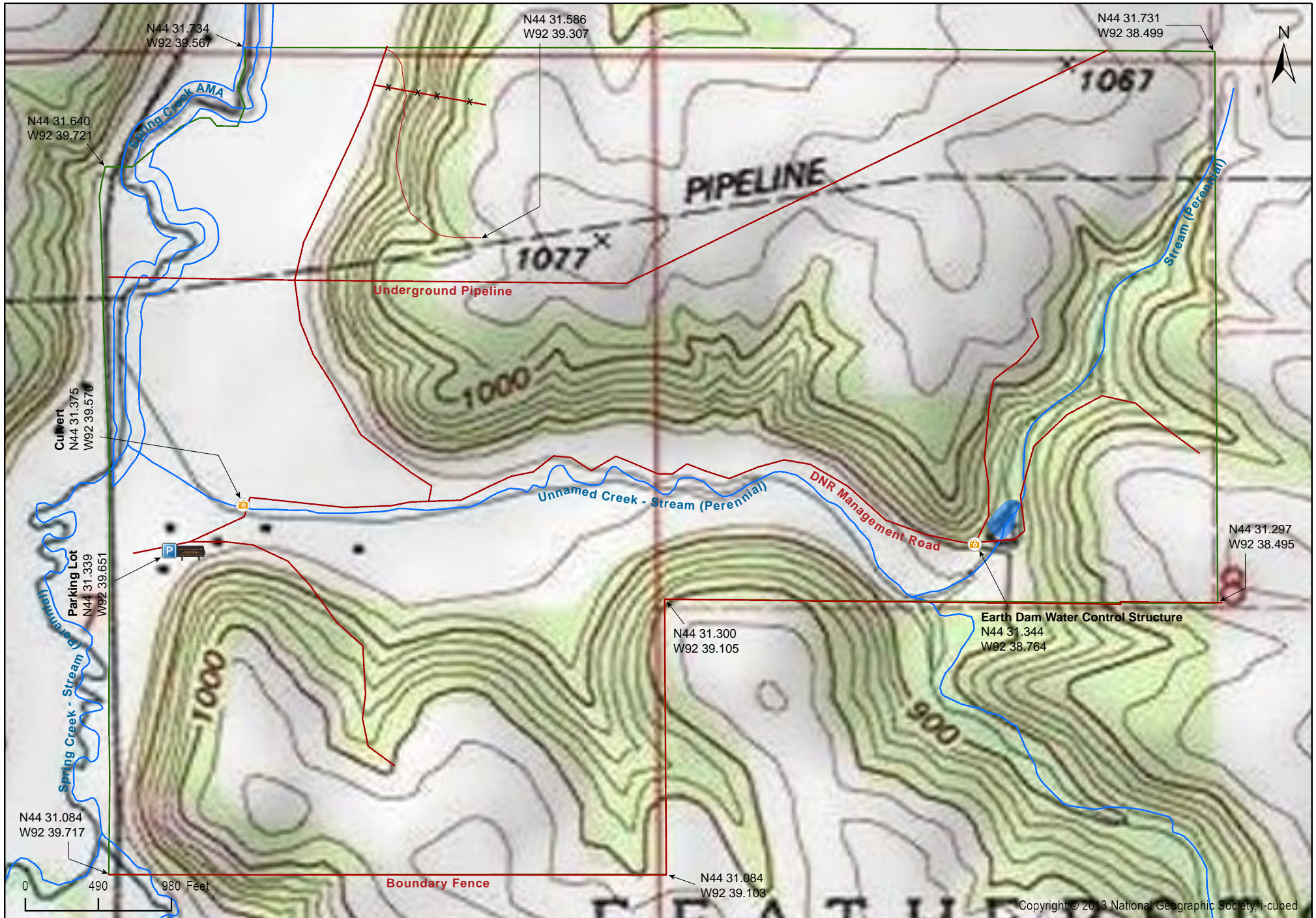
John Peter Hoffman Spring Brook Valley WMA

Goodhue County



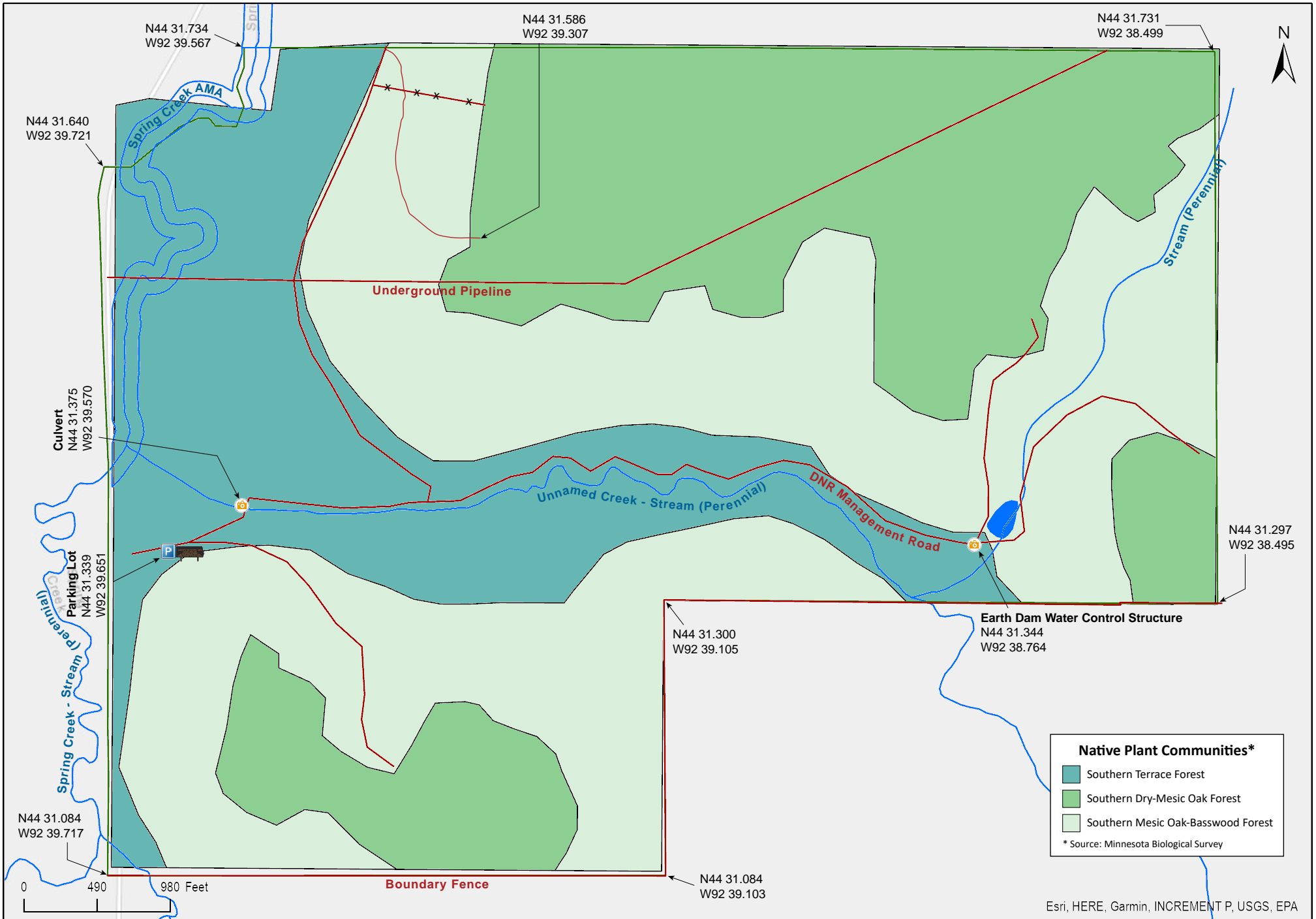
John Peter Hoffman Spring Brook Valley WMA

Goodhue County

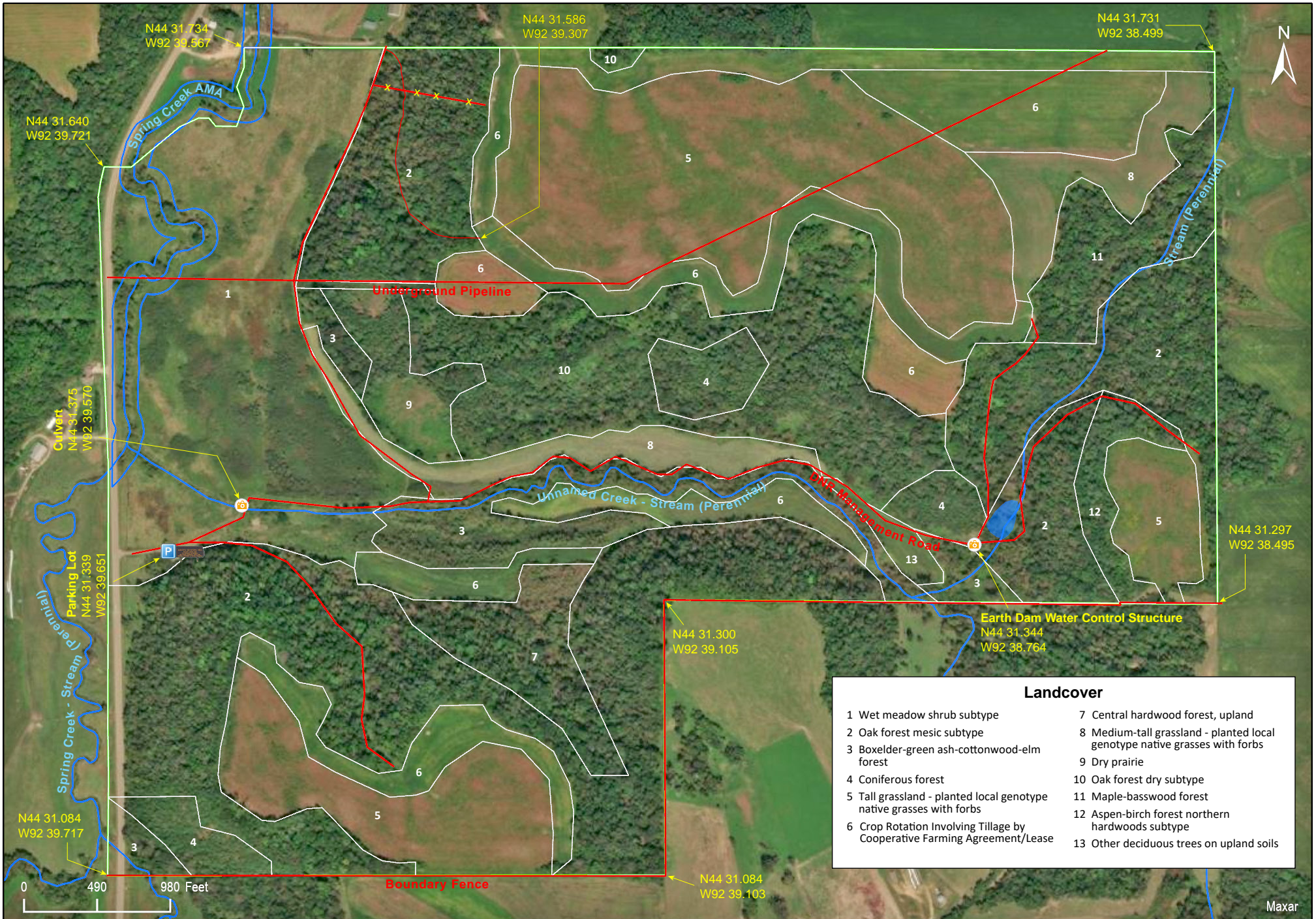


John Peter Hoffman Spring Brook Valley WMA

Goodhue County







Landcover	
1	Wet meadow shrub subtype
2	Oak forest mesic subtype
3	Boxelder-green ash-cottonwood-elm forest
4	Coniferous forest
5	Tall grassland - planted local genotype native grasses with forbs
6	Crop Rotation Involving Tillage by Cooperative Farming Agreement/Lease
7	Central hardwood forest, upland
8	Medium-tall grassland - planted local genotype native grasses with forbs
9	Dry prairie
10	Oak forest dry subtype
11	Maple-basswood forest
12	Aspen-birch forest northern hardwoods subtype
13	Other deciduous trees on upland soils

John Peter Hoffman Spring Brook Valley WMA

Directions and Notes from Minnesota DNR

Directions

From Red Wing, go 2.8 miles S on State Hwy 19 then 0.5 miles S on County Hwy 6.

Notes from MinnesotaSeasons.com

Parking

There is a short paved road leading to a parking lot on the east side of County 6

Blvd.

N44 31.339, W92 39.651

Hiking Trails

There are 2.51 miles of DNR management road that provides easy access to all parts of the WMA.

DISCLAIMER OF WARRANTIES AND LIMITATIONS OF LIABILITY

MinnesotaSeasons.com, The Nature Conservancy, U.S. Department of Agriculture, Forest Service, U.S. Fish and Wildlife Service, the state of Minnesota, the Minnesota Department of Natural Resources, and their employees, make no representations or warranties, express or implied, with respect to the use of or reliance on the data provided herewith, regardless of its format or means of transmission. There are no guarantees or representations to the user as to the accuracy, currency, completeness, suitability or reliability of this data for any purpose. THE USER ACCEPTS THE DATA AND/OR SOFTWARE "AS IS" AND ASSUMES ALL RISKS ASSOCIATED WITH ITS USE.

IN NO EVENT SHALL MINNESOTASEASONS.COM, TNC, USDA-FS, USFWS, OR MNDNR BE LIABLE FOR ANY DIRECT, INDIRECT, INCIDENTAL, SPECIAL, EXEMPLARY, OR CONSEQUENTIAL DAMAGES (INCLUDING, BUT NOT LIMITED TO, PROCUREMENT OF SUBSTITUTE GOODS OR SERVICES; LOSS OF USE, DATA, OR PROFITS; OR BUSINESS INTERRUPTION) HOWEVER CAUSED AND ON ANY THEORY OF LIABILITY, WHETHER IN CONTRACT, STRICT LIABILITY, OR TORT (INCLUDING NEGLIGENCE OR OTHERS) ARISING IN ANY WAY OUT OF THE USE OF THIS DATA, EVEN IF ADVISED OF THE POSSIBILITY OF SUCH DAMAGE OR FOR ANY CLAIM BY ANY OTHER PARTY.

Your use of the data is acceptance on your part of the terms and conditions set forth herein.