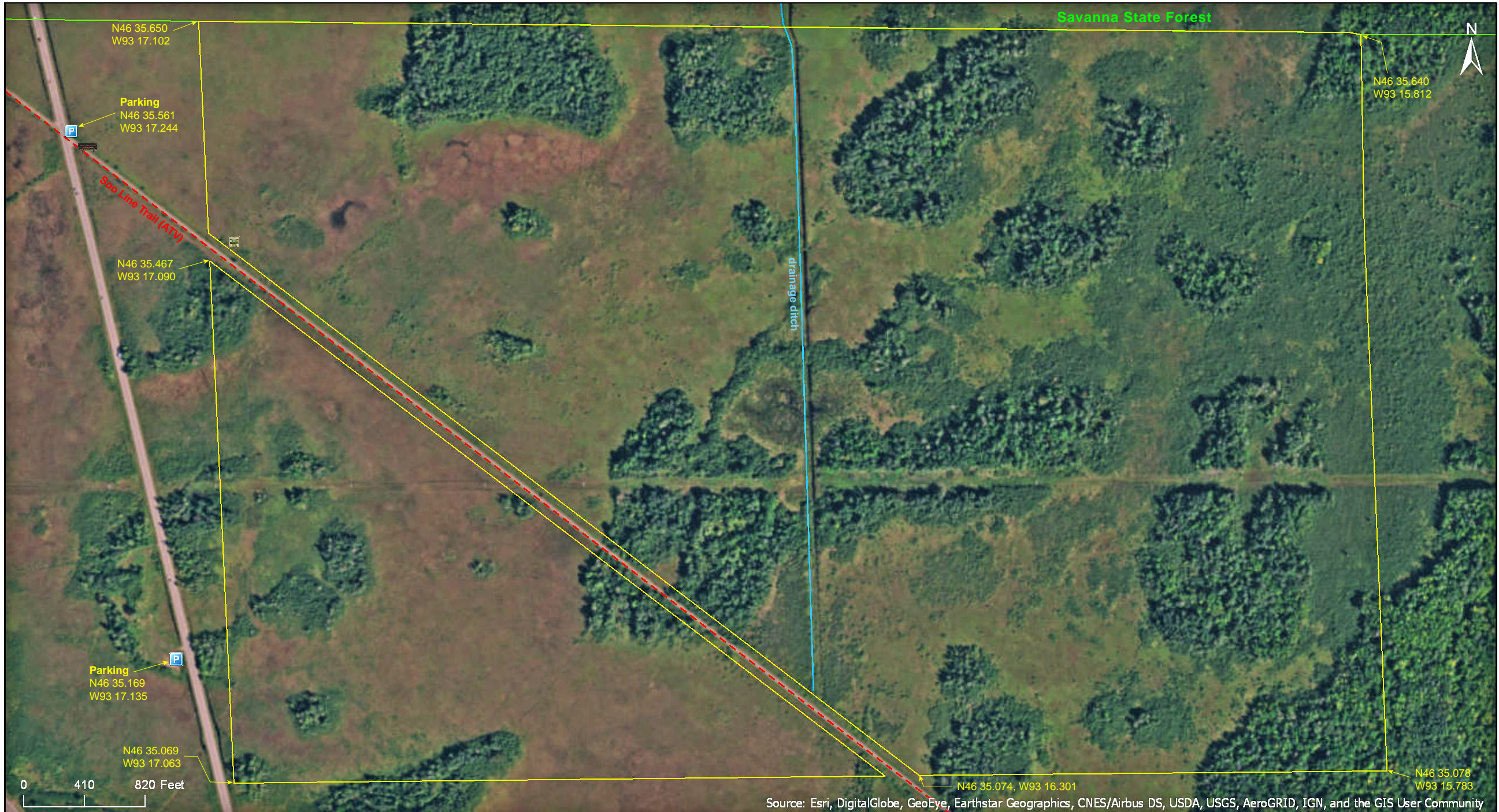


# McGregor Marsh SNA

Aitkin County



Source: Esri, DigitalGlobe, GeoEye, Earthstar Geographics, CNES/Airbus DS, USDA, USGS, AeroGRID, IGN, and the GIS User Community

# McGregor Marsh SNA

Aitkin County



Sources: Esri, HERE, DeLorme, USGS, Intermap, INCREMENT P, NRCan, Esri Japan, METI, Esri China (Hong Kong), Esri Korea, Esri (Thailand), MapmyIndia, NGCC, © OpenStreetMap contributors, and the GIS User Community

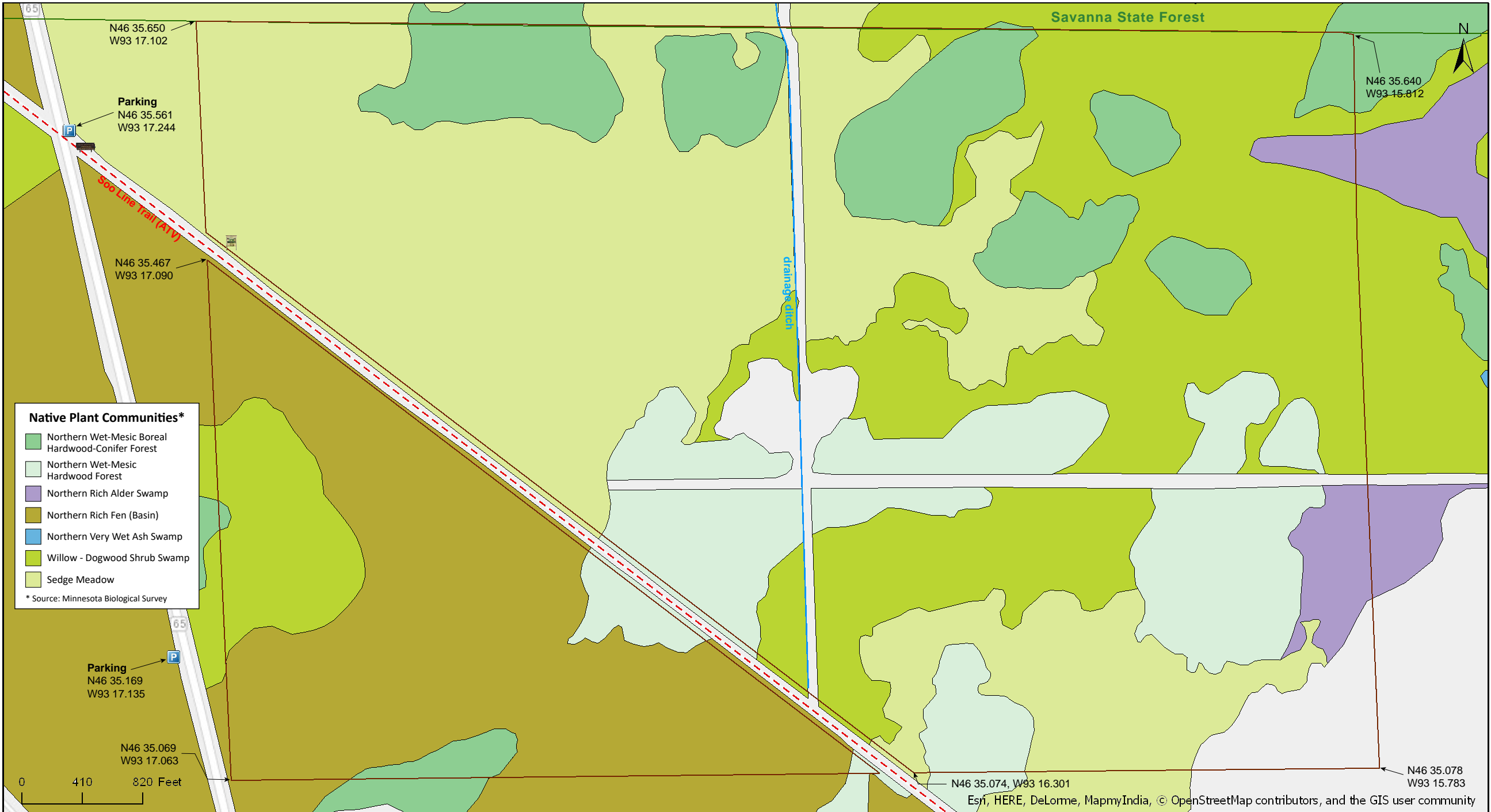
# McGregor Marsh SNA

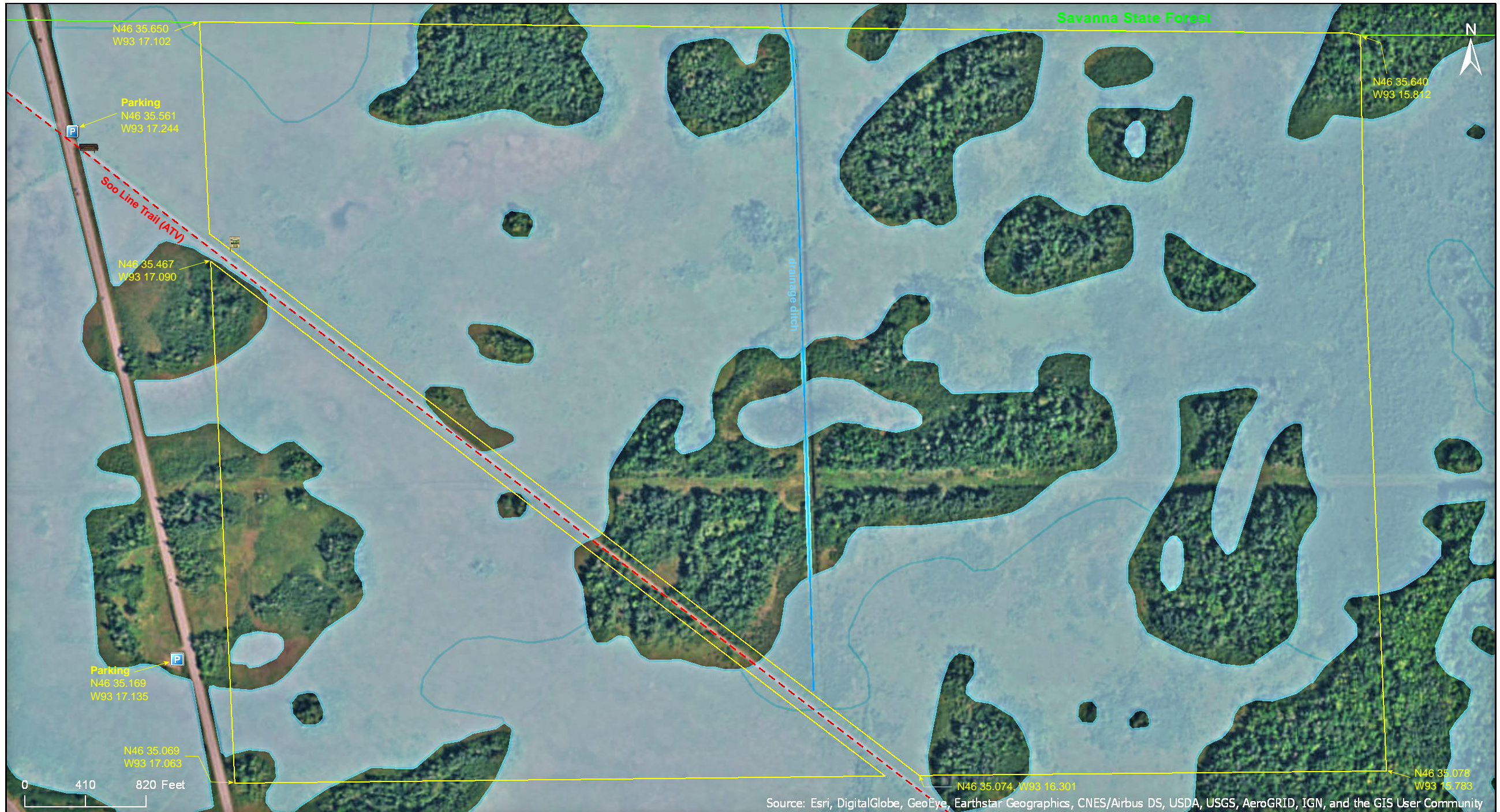
Aitkin County



# McGregor Marsh SNA

Aitkin County





Source: Esri, DigitalGlobe, GeoEye, Earthstar Geographics, CNES/Airbus DS, USDA, USGS, AeroGRID, IGN, and the GIS User Community

# McGregor Marsh SNA

## **Directions and Notes from Minnesota DNR**

**Directions:** From McGregor 2 miles S on MN Hwy 65. Park on E, near wood-routed sign at Soo Line Trail crossing.

**Lat/Lon:** 46.592694, -93.287398

This site is in an Audubon Important Bird Area and Watchable Wildlife Viewing Area. The Soo Line North ATV Trail passes through this site

## **Notes from MinnesotaSeasons.com**

### **Parking**

Shoulder of MN Hwy. 65  
N46 35.561, W93 17.244

### Parking Lot

N46 35.169, W93 17.135

On the west side of MN Highway 65 there is a large, overgrown, parking area at the coordinates above (Parking). Note that this is on private property but is not near any house or other structure.

### **Trail**

Unless you are wearing hip waders, the Soo Line ATV Trail may be the only access to the SNA. From the parking area hike ½ mile north on MN 65 to the trail. There is a wood SNA sign on the east side of the road. Follow the trail southeast 325 yards to the west border of the SNA and an information kiosk.

## **DISCLAIMER OF WARRANTIES AND LIMITATIONS OF LIABILITY**

MinnesotaSeasons.com, The Nature Conservancy, U.S. Department of Agriculture, Forest Service, U.S. Fish and Wildlife Service, the state of Minnesota, the Minnesota Department of Natural Resources, and their employees, make no representations or warranties, express or implied, with respect to the use of or reliance on the data provided herewith, regardless of its format or means of transmission. There are no guarantees or representations to the user as to the accuracy, currency, completeness, suitability or reliability of this data for any purpose. THE USER ACCEPTS THE DATA AND/OR SOFTWARE "AS IS" AND ASSUMES ALL RISKS ASSOCIATED WITH ITS USE.

IN NO EVENT SHALL MINNESOTASEASONS.COM, TNC, USDA-FS, USFWS, OR MNDNR BE LIABLE FOR ANY DIRECT, INDIRECT, INCIDENTAL, SPECIAL, EXEMPLARY, OR CONSEQUENTIAL DAMAGES (INCLUDING, BUT NOT LIMITED TO, PROCUREMENT OF SUBSTITUTE GOODS OR SERVICES; LOSS OF USE, DATA, OR PROFITS; OR BUSINESS INTERRUPTION) HOWEVER CAUSED AND ON ANY THEORY OF LIABILITY, WHETHER IN CONTRACT, STRICT LIABILITY, OR TORT (INCLUDING NEGLIGENCE OR OTHERS) ARISING IN ANY WAY OUT OF THE USE OF THIS DATA, EVEN IF ADVISED OF THE POSSIBILITY OF SUCH DAMAGE OR FOR ANY CLAIM BY ANY OTHER PARTY.

Your use of the data is acceptance on your part of the terms and conditions set forth herein.