

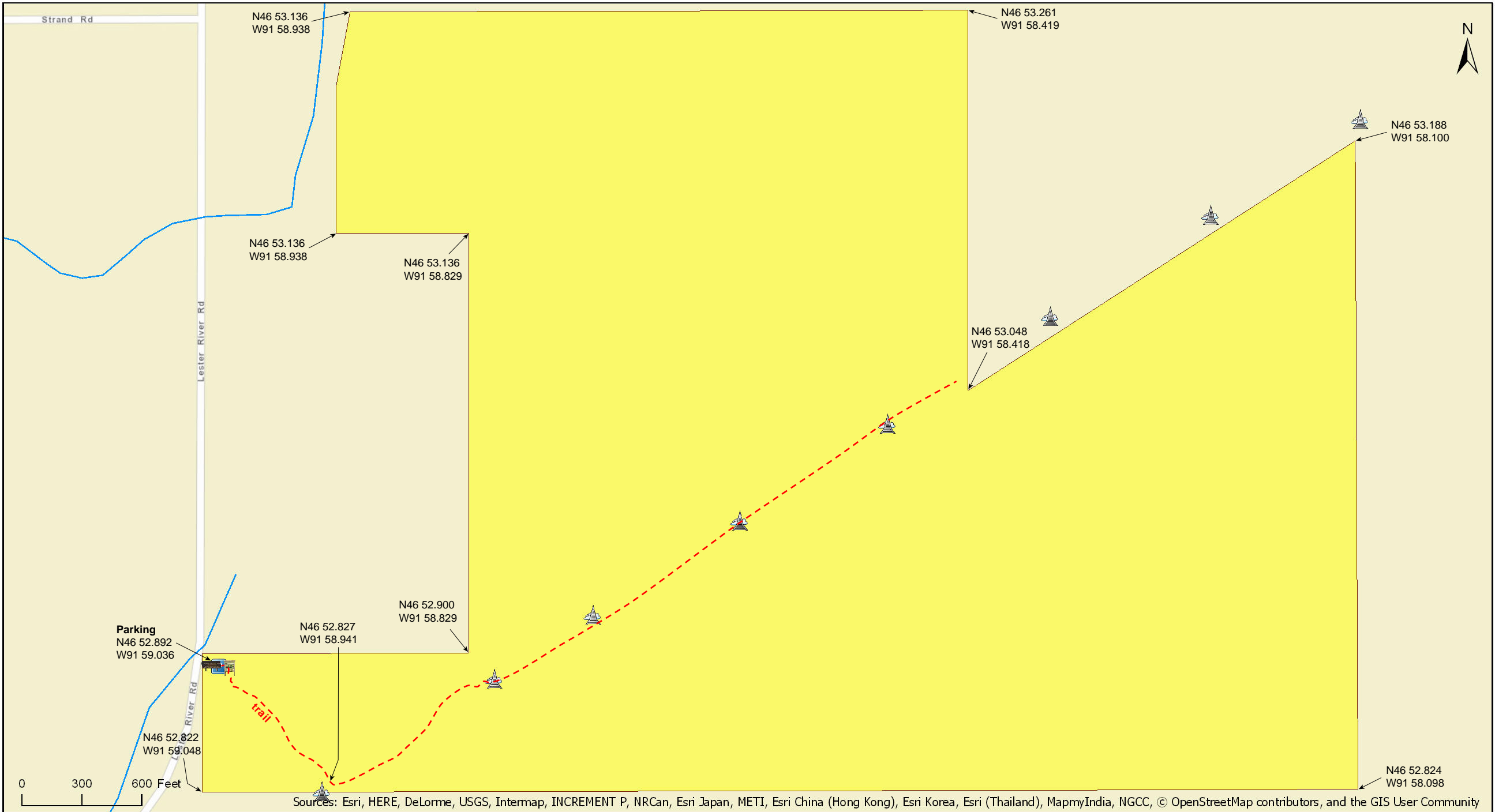
# Moose Mountain SNA

St. Louis County



# Moose Mountain SNA

St. Louis County



Sources: Esri, HERE, DeLorme, USGS, Intermap, INCREMENT P, NRCan, Esri Japan, METI, Esri China (Hong Kong), Esri Korea, Esri (Thailand), MapmyIndia, NGCC, © OpenStreetMap contributors, and the GIS User Community

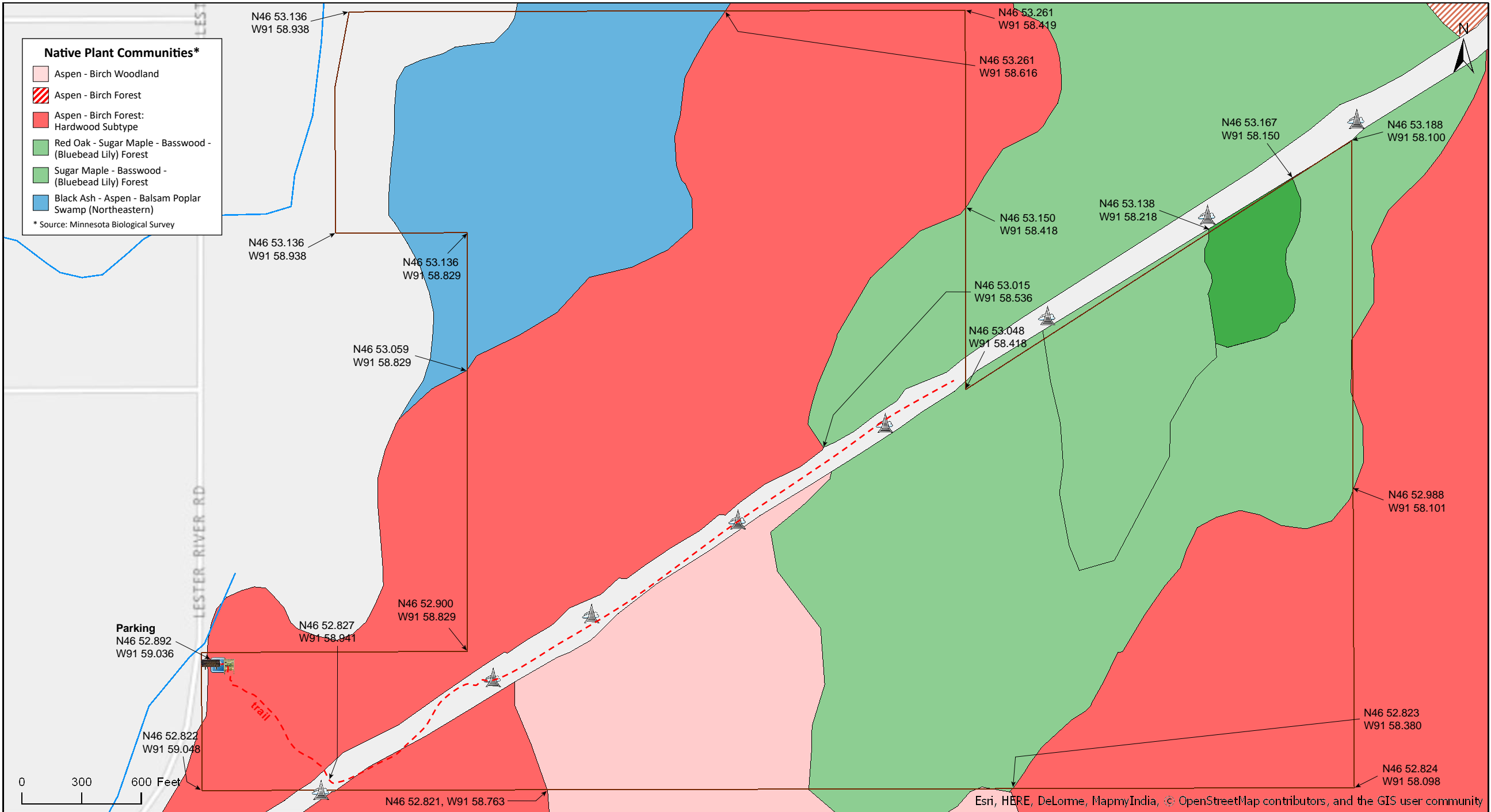
# Moose Mountain SNA

St. Louis County



# Moose Mountain SNA

St. Louis County





Source: Esri, DigitalGlobe, GeoEye, Earthstar Geographics, CNES/Airbus DS, USDA, USGS, AeroGRID, IGN, and the GIS User Community

# Moose Mountain SNA

## **Directions and Notes from Minnesota DNR**

**Directions:** From Duluth on MN Hwy 61 N on Lester River Rd (Co Rd 12) for 3.4 miles. Park in lot on E.

**Lat/Lon:** 46.881545, -91.983906

This site has no maintained trails or other recreational facilities. This site is in an Audubon Important Bird Area.

The best example of old growth hardwoods is on the south side of the powerline, just over the top of the hill. The area upslope of the old growth and to the north shows direct evidence of the wildfires of the early 1900s.

## **Notes from MinnesotaSeasons.com**

### **Parking**

N46 52.892, W91 59.036

### **Hiking Trails**

A hiking trail leads from the parking area 200 yards uphill to a powerline clearing, then ½ mile along the clearing. Near the end of the trail a fire road can be followed back to the County Road 12 about ½ mile north of the parking area.

## **DISCLAIMER OF WARRANTIES AND LIMITATIONS OF LIABILITY**

MinnesotaSeasons.com, The Nature Conservancy, U.S. Department of Agriculture, Forest Service, U.S. Fish and Wildlife Service, the state of Minnesota, the Minnesota Department of Natural Resources, and their employees, make no representations or warranties, express or implied, with respect to the use of or reliance on the data provided herewith, regardless of its format or means of transmission. There are no guarantees or representations to the user as to the accuracy, currency, completeness, suitability or reliability of this data for any purpose. THE USER ACCEPTS THE DATA AND/OR SOFTWARE "AS IS" AND ASSUMES ALL RISKS ASSOCIATED WITH ITS USE.

IN NO EVENT SHALL MINNESOTASEASONS.COM, TNC, USDA-FS, USFWS, OR MNDNR BE LIABLE FOR ANY DIRECT, INDIRECT, INCIDENTAL, SPECIAL, EXEMPLARY, OR CONSEQUENTIAL DAMAGES (INCLUDING, BUT NOT LIMITED TO, PROCUREMENT OF SUBSTITUTE GOODS OR SERVICES; LOSS OF USE, DATA, OR PROFITS; OR BUSINESS INTERRUPTION) HOWEVER CAUSED AND ON ANY THEORY OF LIABILITY, WHETHER IN CONTRACT, STRICT LIABILITY, OR TORT (INCLUDING NEGLIGENCE OR OTHERS) ARISING IN ANY WAY OUT OF THE USE OF THIS DATA, EVEN IF ADVISED OF THE POSSIBILITY OF SUCH DAMAGE OR FOR ANY CLAIM BY ANY OTHER PARTY.

Your use of the data is acceptance on your part of the terms and conditions set forth herein.