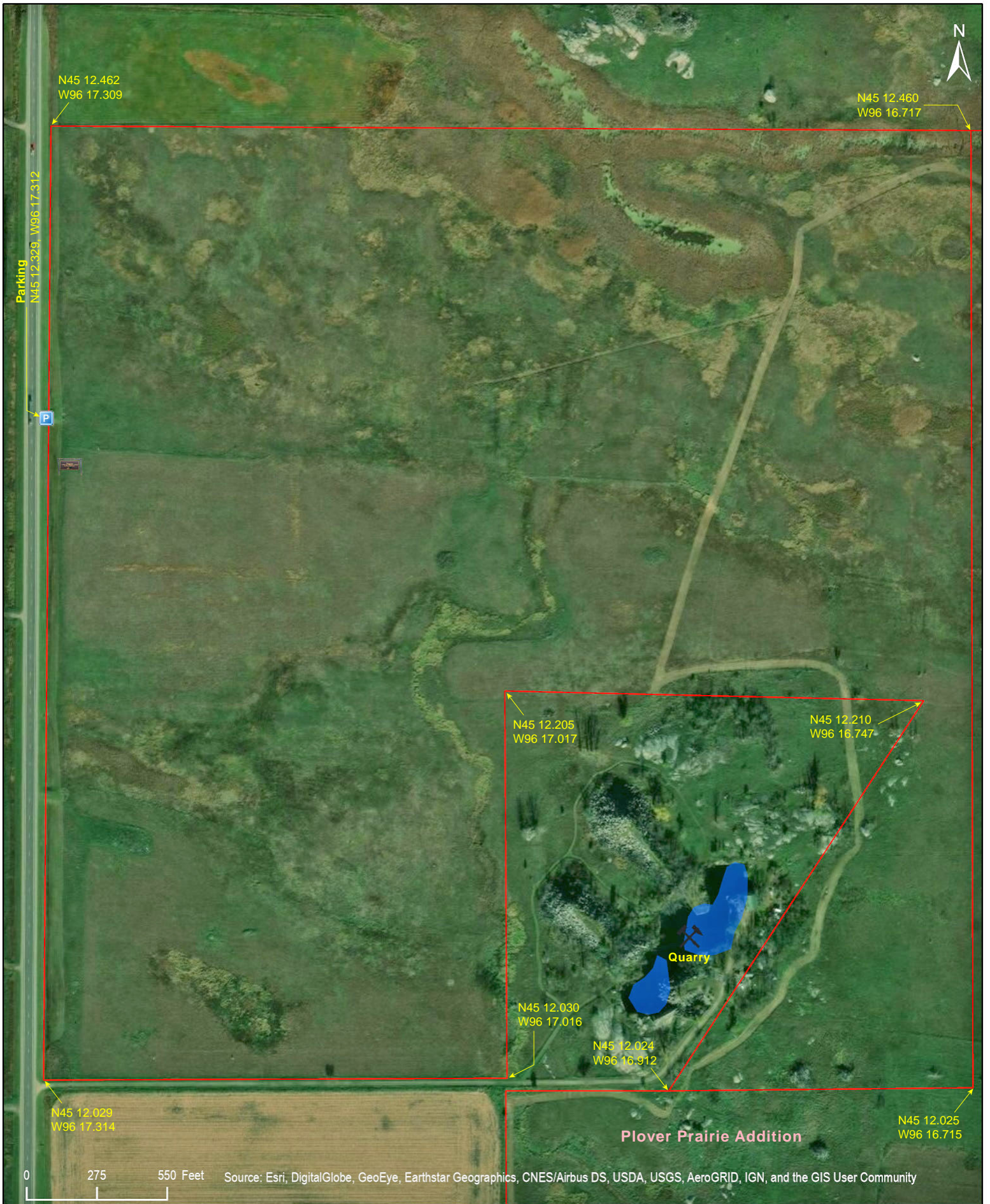


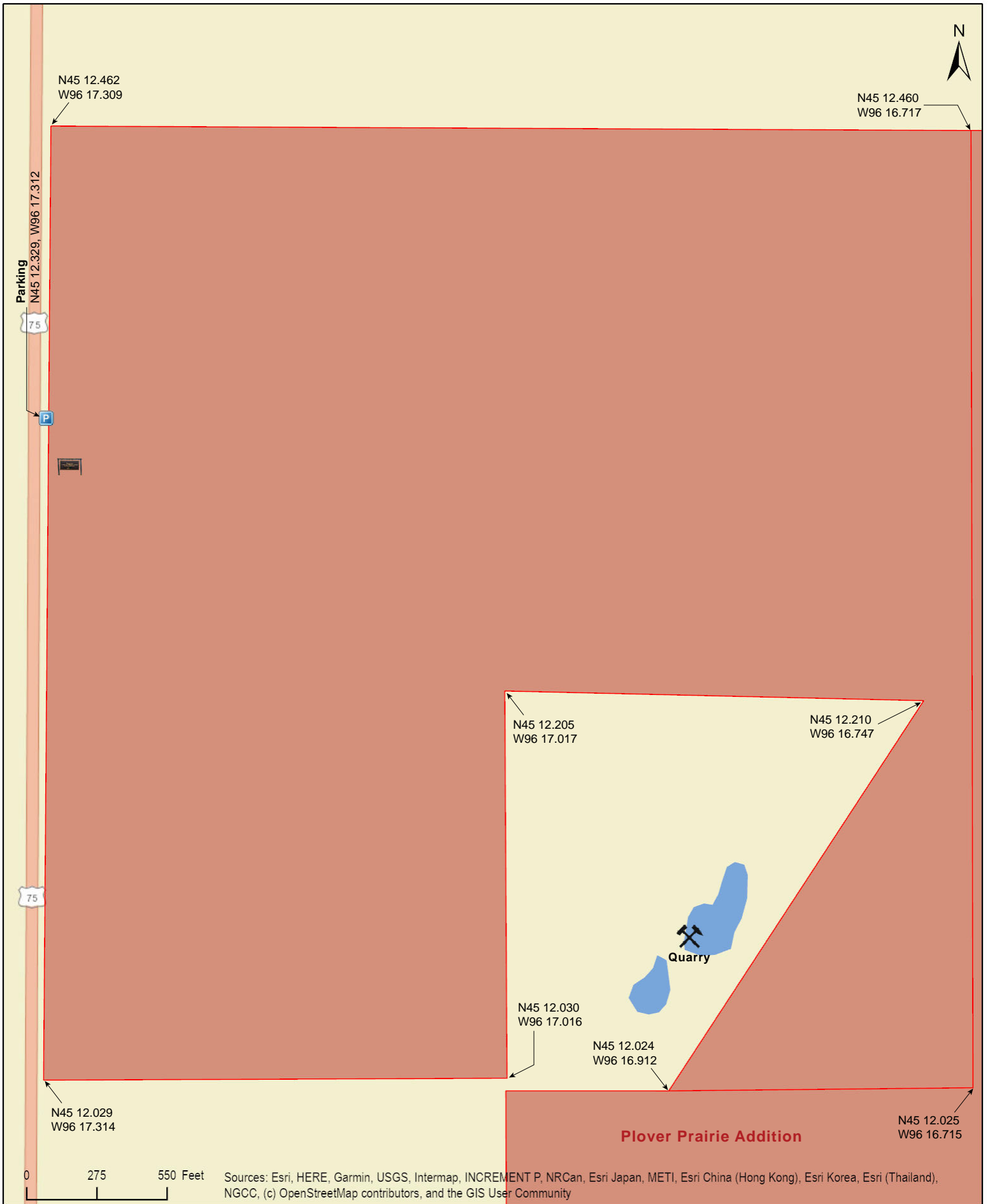
Plover Prairie West Unit

Lac qui Parle County



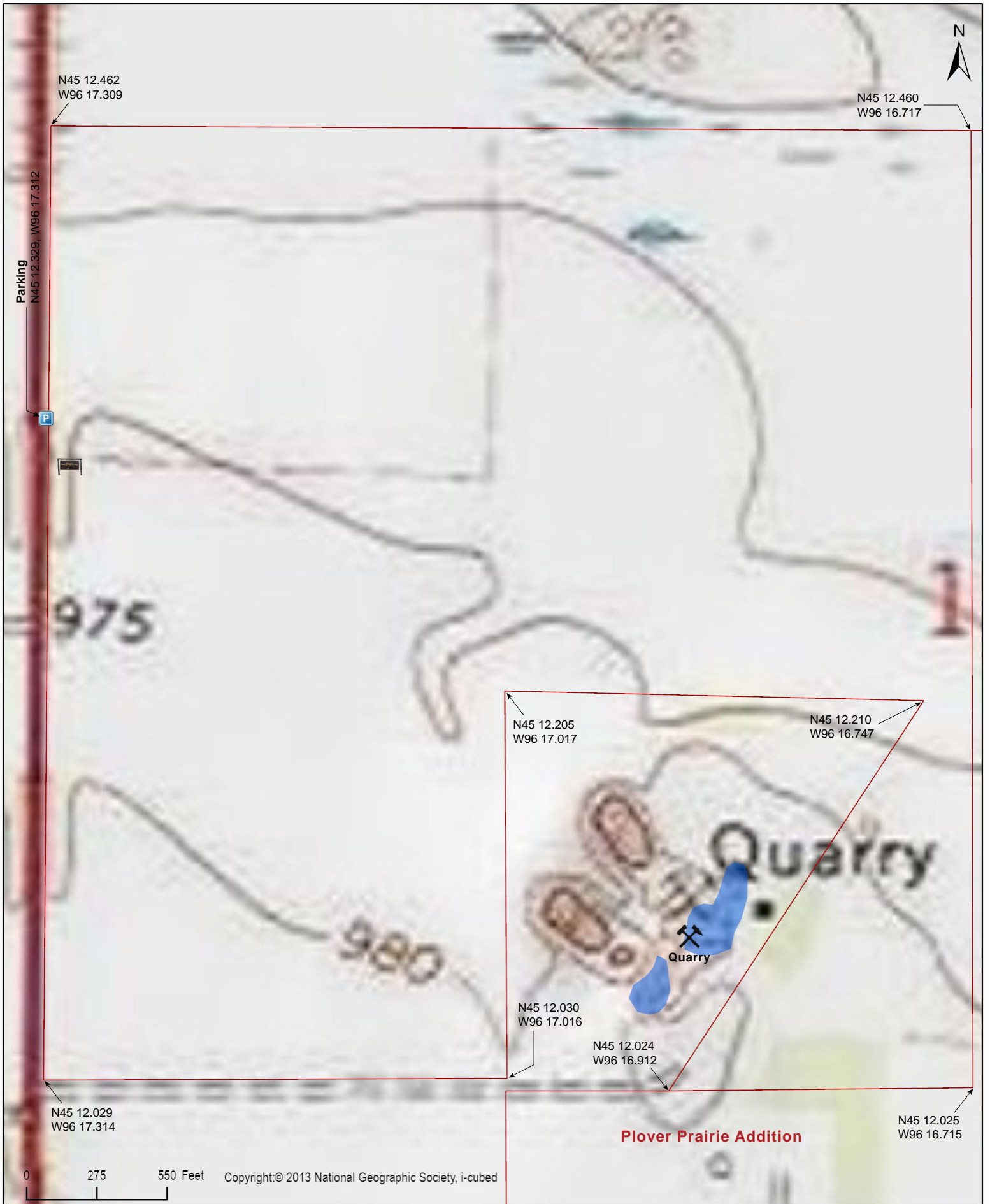
Plover Prairie West Unit

Lac qui Parle County



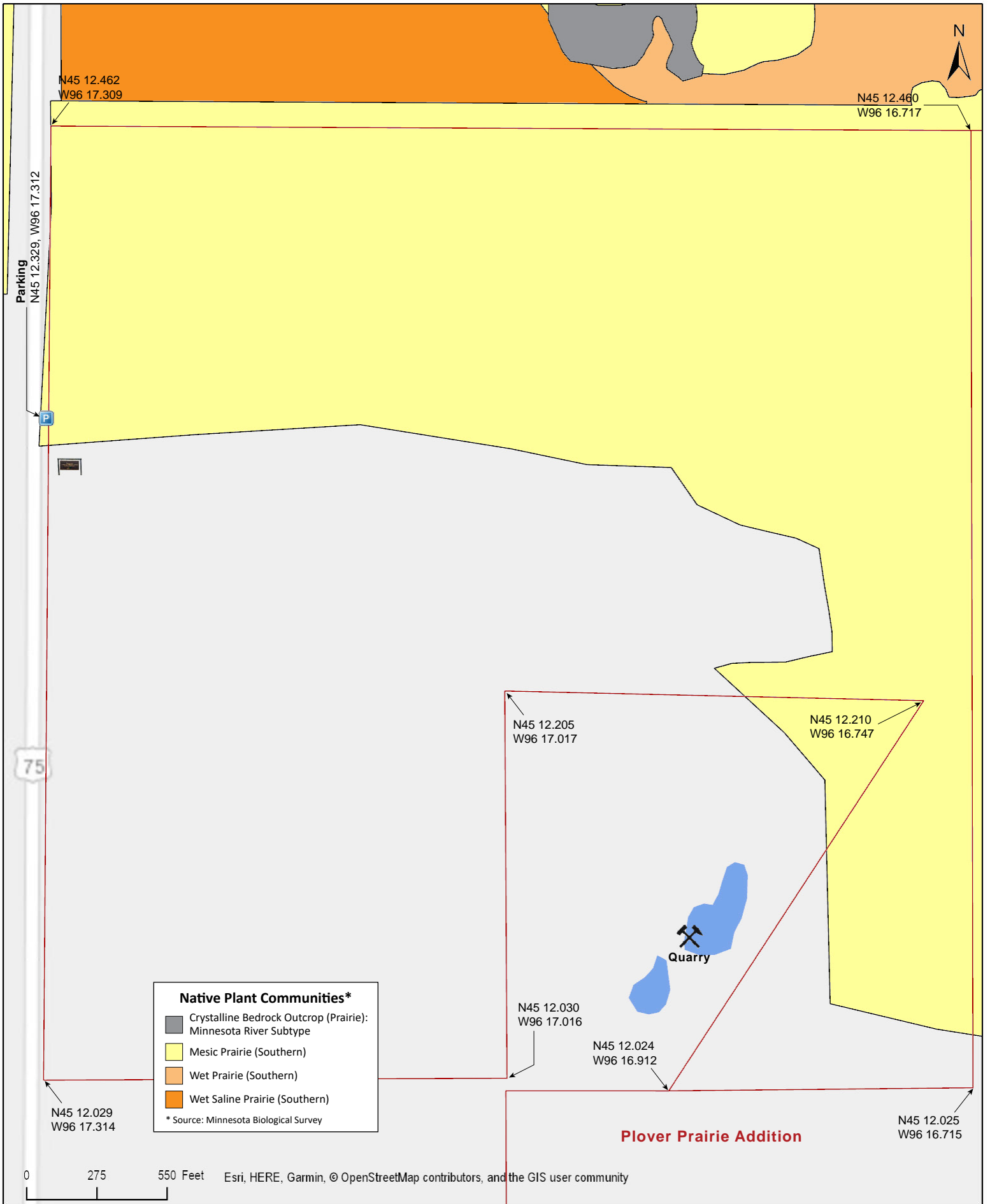
Plover Prairie West Unit

Lac qui Parle County



Plover Prairie West Unit

Lac qui Parle County



Plover Prairie West Unit

National Wetlands Inventory

Lac qui Parle County



Plover Prairie West Unit

Directions and Notes from The Nature Conservancy

From Bellingham, take State Highway 75 about three miles north to County Road 38. Turn east, and drive for two miles. Turn north, and drive for one mile. At this intersection, the preserve is located on the northwest and northeast corners, and is marked by a large wood sign.

To visit the west unit, turn west and go two miles to State Highway 75. Turn north for one-half mile. The main sign and entrance are located on the east side of the highway.

Notes from MinnesotaSeasons.com

Parking

There is a field access/pulloff on the east side of US Hwy 75 just north of the large TNC sign at the west boundary of this unit. Park on the field access.

N45 12.329, W96 17.312

DISCLAIMER OF WARRANTIES AND LIMITATIONS OF LIABILITY

MinnesotaSeasons.com, The Nature Conservancy, U.S. Department of Agriculture, Forest Service, U.S. Fish and Wildlife Service, the state of Minnesota, the Minnesota Department of Natural Resources, and their employees, make no representations or warranties, express or implied, with respect to the use of or reliance on the data provided herewith, regardless of its format or means of transmission. There are no guarantees or representations to the user as to the accuracy, currency, completeness, suitability or reliability of this data for any purpose. THE USER ACCEPTS THE DATA AND/OR SOFTWARE "AS IS" AND ASSUMES ALL RISKS ASSOCIATED WITH ITS USE.

IN NO EVENT SHALL MINNESOTASEASONS.COM, TNC, USDA-FS, USFWS, OR MNDNR BE LIABLE FOR ANY DIRECT, INDIRECT, INCIDENTAL, SPECIAL, EXEMPLARY, OR CONSEQUENTIAL DAMAGES (INCLUDING, BUT NOT LIMITED TO, PROCUREMENT OF SUBSTITUTE GOODS OR SERVICES; LOSS OF USE, DATA, OR PROFITS; OR BUSINESS INTERRUPTION) HOWEVER CAUSED AND ON ANY THEORY OF LIABILITY, WHETHER IN CONTRACT, STRICT LIABILITY, OR TORT (INCLUDING NEGLIGENCE OR OTHERS) ARISING IN ANY WAY OUT OF THE USE OF THIS DATA, EVEN IF ADVISED OF THE POSSIBILITY OF SUCH DAMAGE OR FOR ANY CLAIM BY ANY OTHER PARTY.

Your use of the data is acceptance on your part of the terms and conditions set forth herein.