

Prairie Creek WMA Engeseth-Rinde Unit

Rice County



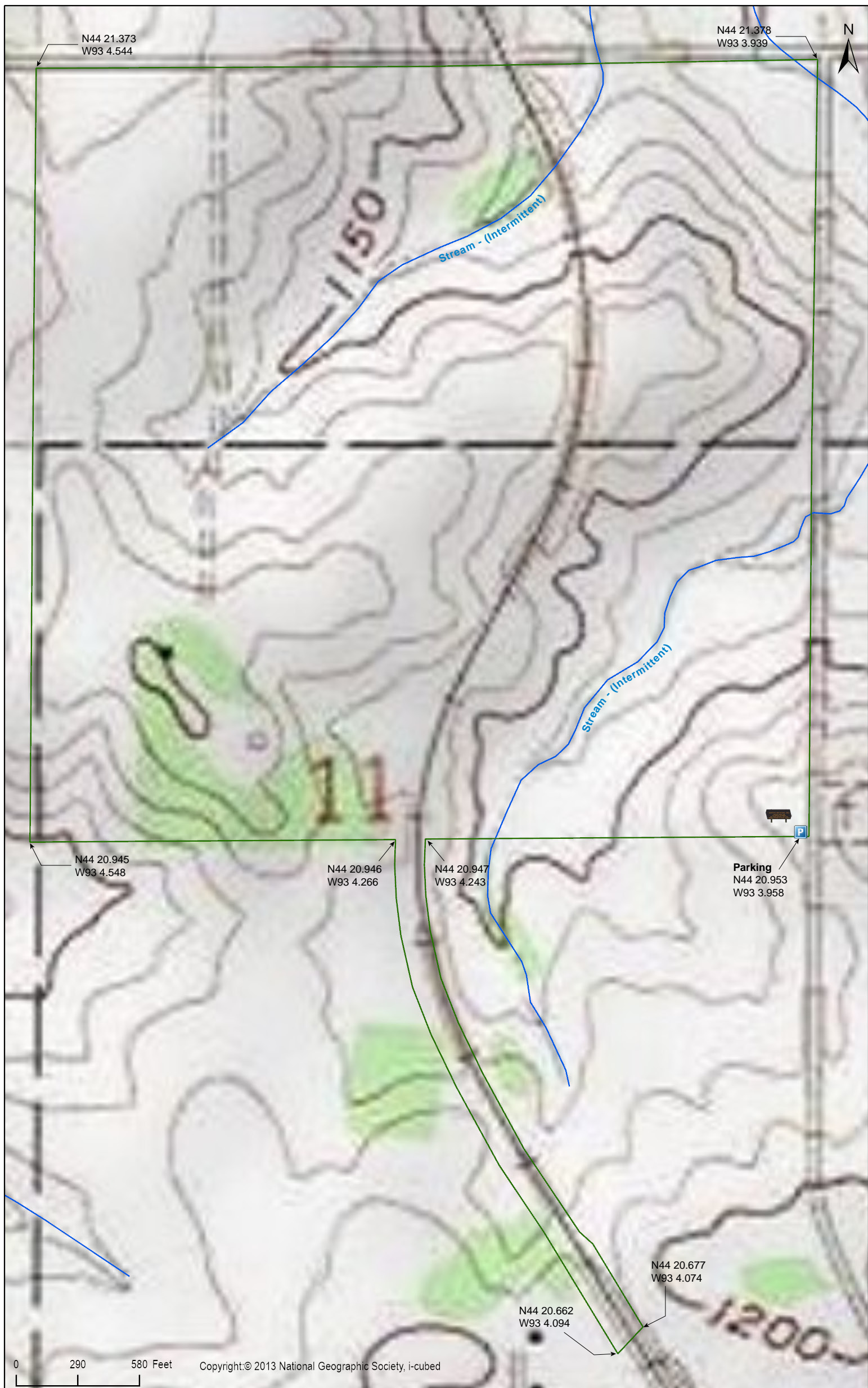
Prairie Creek WMA Engeseth-Rinde Unit

Rice County



Prairie Creek WMA Engeseth-Rinde Unit

Rice County



Prairie Creek WMA Engeseth-Rinde Unit

National Wetlands Inventory

Rice County



Prairie Creek WMA Engeseth-Rinde Unit

Directions and Notes from Minnesota DNR

Nearest Town

Nerstrand

Directions

The wildlife area is on the north side of town.

A grass/gravel surface parking area is provided along the west side of Kilmeyer Avenue in the southeast corner of the wildlife area. A 0.4 mile long foot path following the old rail grade provides access from Cherry Street in Nerstrand. No off-street parking is available at this location.

Notes from MinnesotaSeasons.com

Parking

There is a parking lot on the west side of Kilmeyer Ave. at the southeast corner of the site.

N44 20.951, W93 3.953

DISCLAIMER OF WARRANTIES AND LIMITATIONS OF LIABILITY

MinnesotaSeasons.com, The Nature Conservancy, U.S. Department of Agriculture, Forest Service, U.S. Fish and Wildlife Service, the state of Minnesota, the Minnesota Department of Natural Resources, and their employees, make no representations or warranties, express or implied, with respect to the use of or reliance on the data provided herewith, regardless of its format or means of transmission. There are no guarantees or representations to the user as to the accuracy, currency, completeness, suitability or reliability of this data for any purpose. THE USER ACCEPTS THE DATA AND/OR SOFTWARE "AS IS" AND ASSUMES ALL RISKS ASSOCIATED WITH ITS USE.

IN NO EVENT SHALL MINNESOTASEASONS.COM, TNC, USDA-FS, USFWS, OR MNDNR BE LIABLE FOR ANY DIRECT, INDIRECT, INCIDENTAL, SPECIAL, EXEMPLARY, OR CONSEQUENTIAL DAMAGES (INCLUDING, BUT NOT LIMITED TO, PROCUREMENT OF SUBSTITUTE GOODS OR SERVICES; LOSS OF USE, DATA, OR PROFITS; OR BUSINESS INTERRUPTION) HOWEVER CAUSED AND ON ANY THEORY OF LIABILITY, WHETHER IN CONTRACT, STRICT LIABILITY, OR TORT (INCLUDING NEGLIGENCE OR OTHERS) ARISING IN ANY WAY OUT OF THE USE OF THIS DATA, EVEN IF ADVISED OF THE POSSIBILITY OF SUCH DAMAGE OR FOR ANY CLAIM BY ANY OTHER PARTY.

Your use of the data is acceptance on your part of the terms and conditions set forth herein.