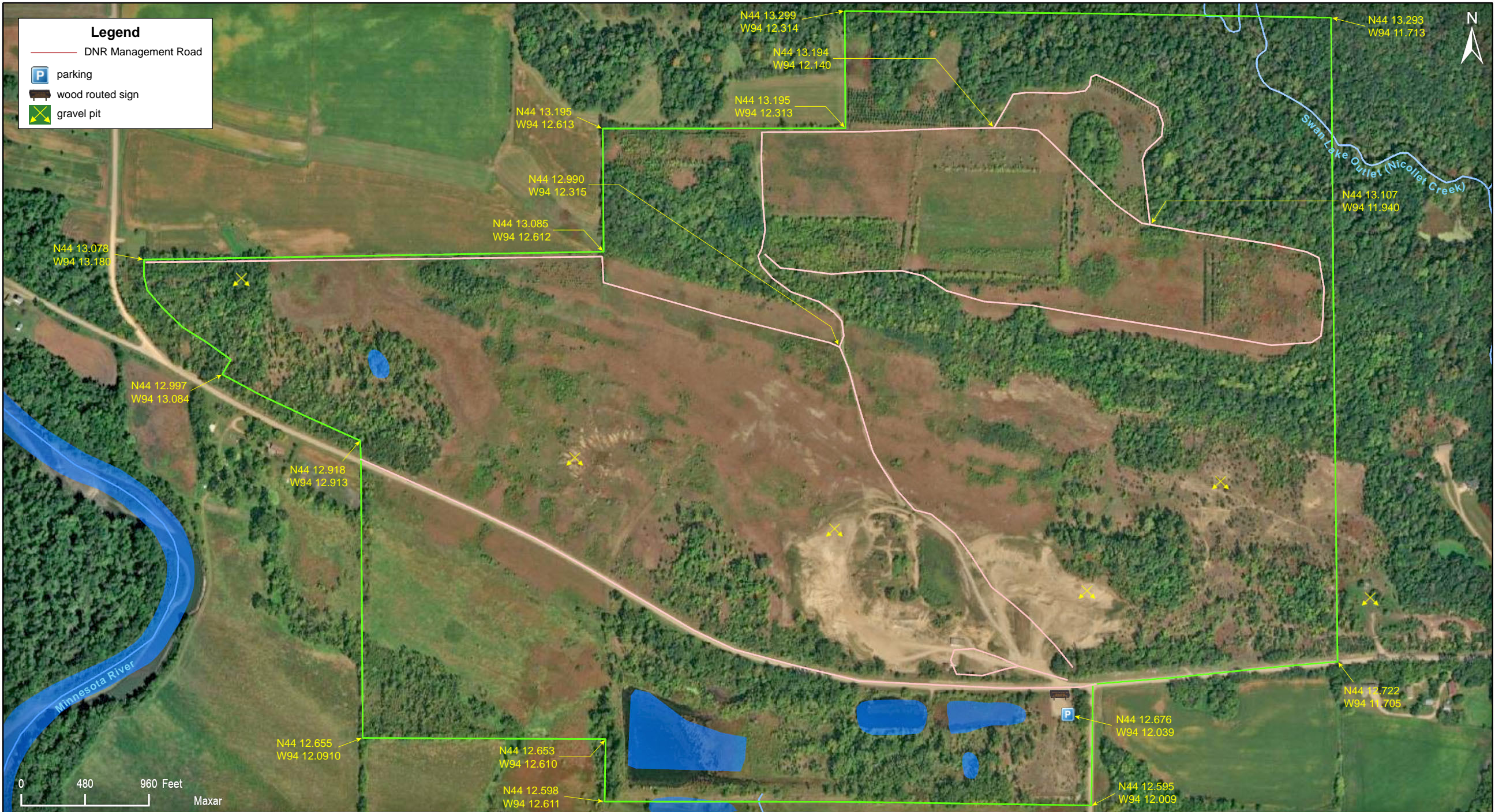


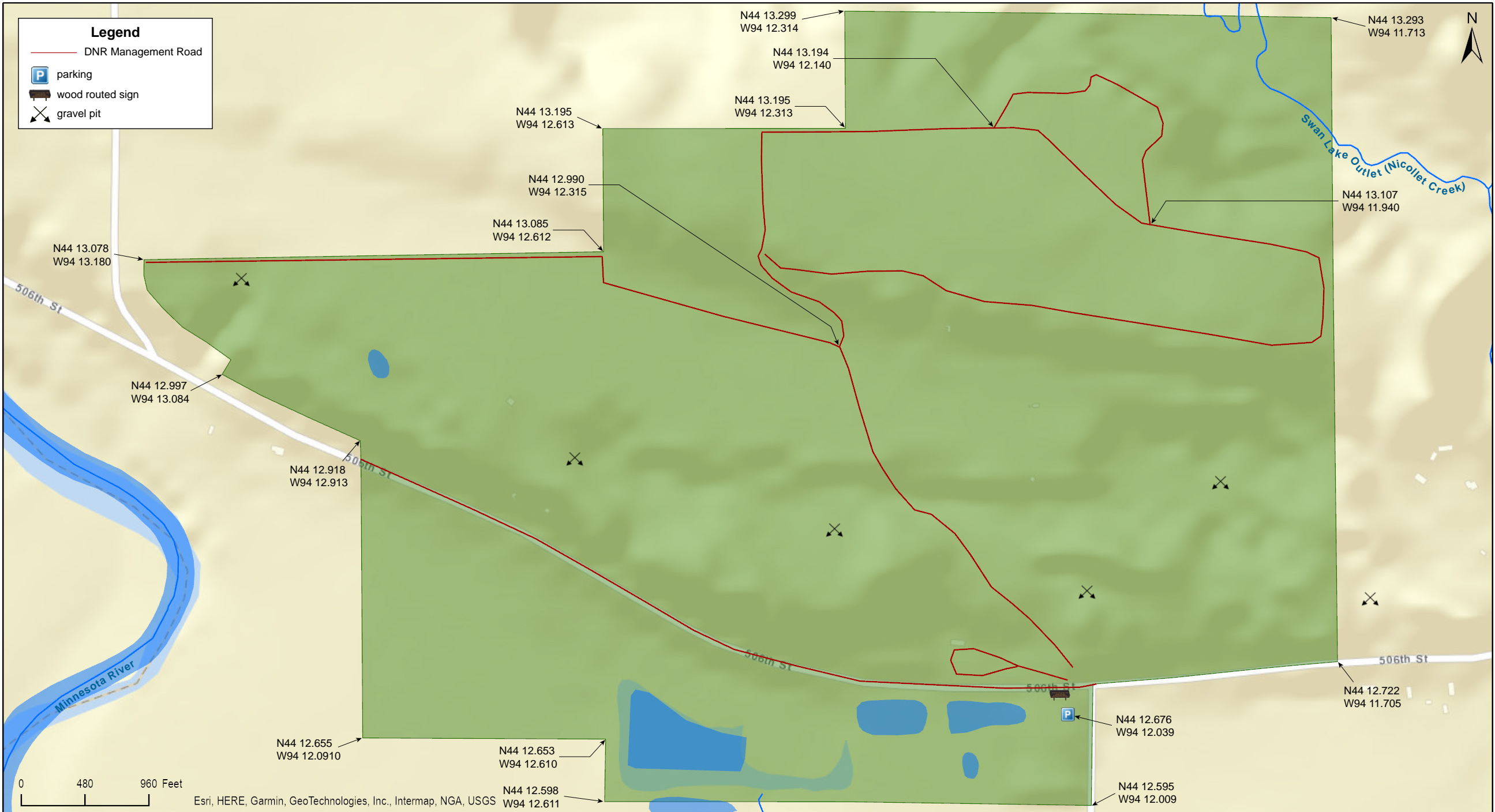
Swan Lake WMA North Star Unit

Nicollet County



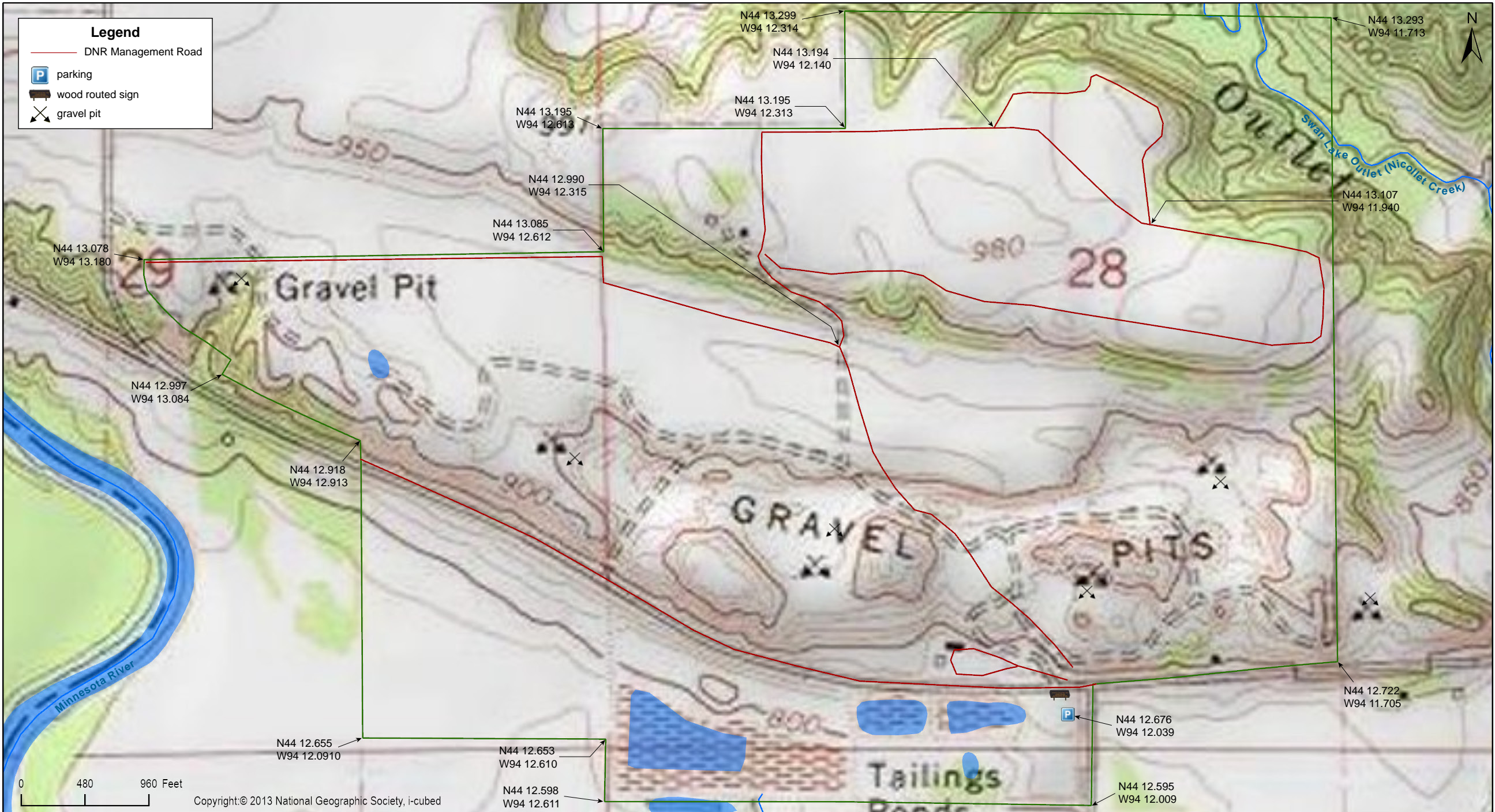
Swan Lake WMA North Star Unit

Nicollet County



Swan Lake WMA North Star Unit

Nicollet County







Copyright: © 2013 National Geographic Society, i-cubed






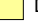


Swan Lake WMA North Star Unit

Nicollet County

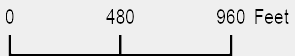
Legend

-  DNR Management Road
-  parking
-  wood routed sign
-  gravel pit

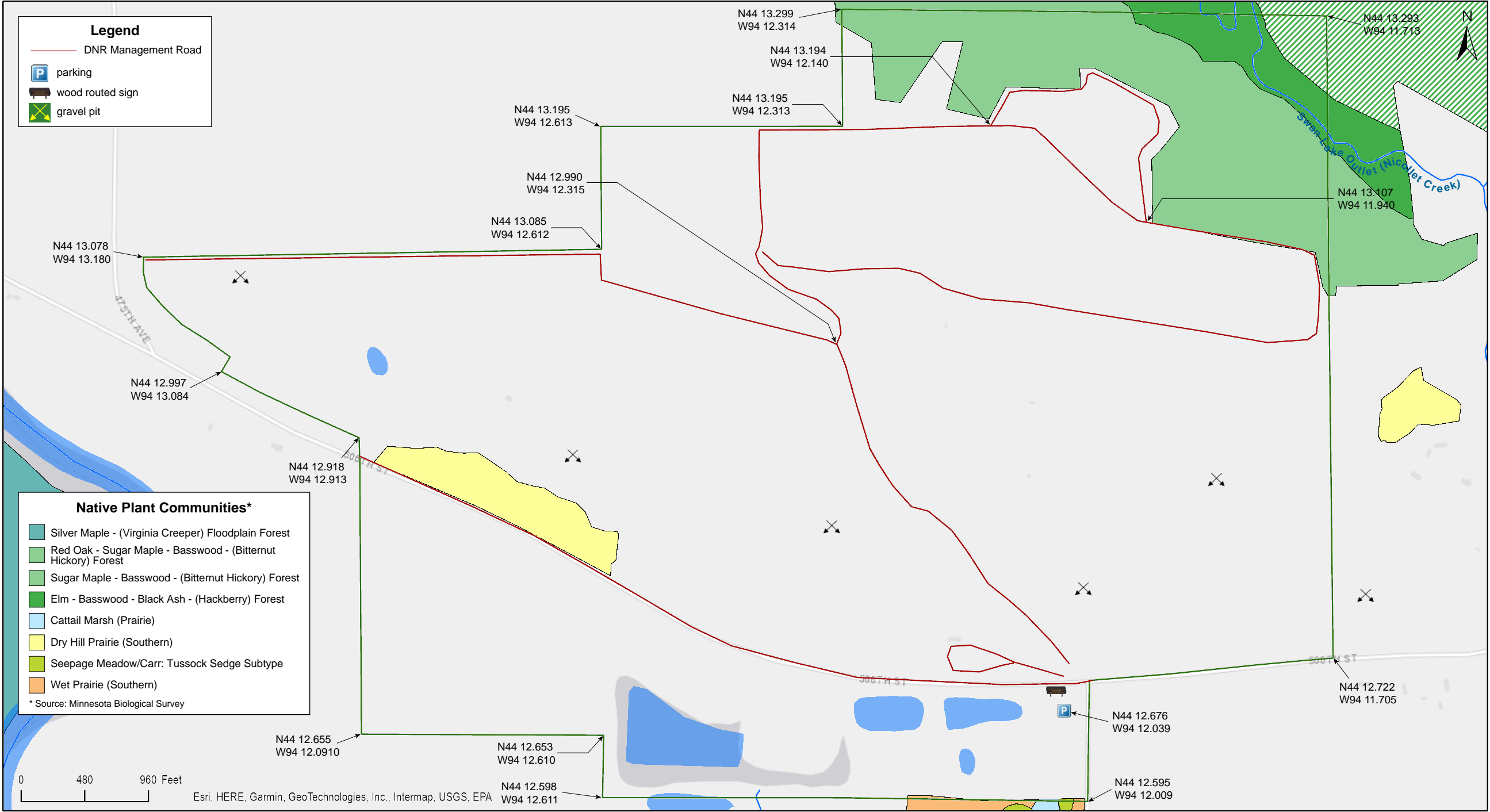
Native Plant Communities*

-  Silver Maple - (Virginia Creeper) Floodplain Forest
-  Red Oak - Sugar Maple - Basswood - (Bitternut Hickory) Forest
-  Sugar Maple - Basswood - (Bitternut Hickory) Forest
-  Elm - Basswood - Black Ash - (Hackberry) Forest
-  Cattail Marsh (Prairie)
-  Dry Hill Prairie (Southern)
-  Seepage Meadow/Carr: Tussock Sedge Subtype
-  Wet Prairie (Southern)

* Source: Minnesota Biological Survey



Esri, HERE, Garmin, GeoTechnologies, Inc., Intermap, USGS, EPA







Swan Lake WMA North Star Unit

Nicollet County

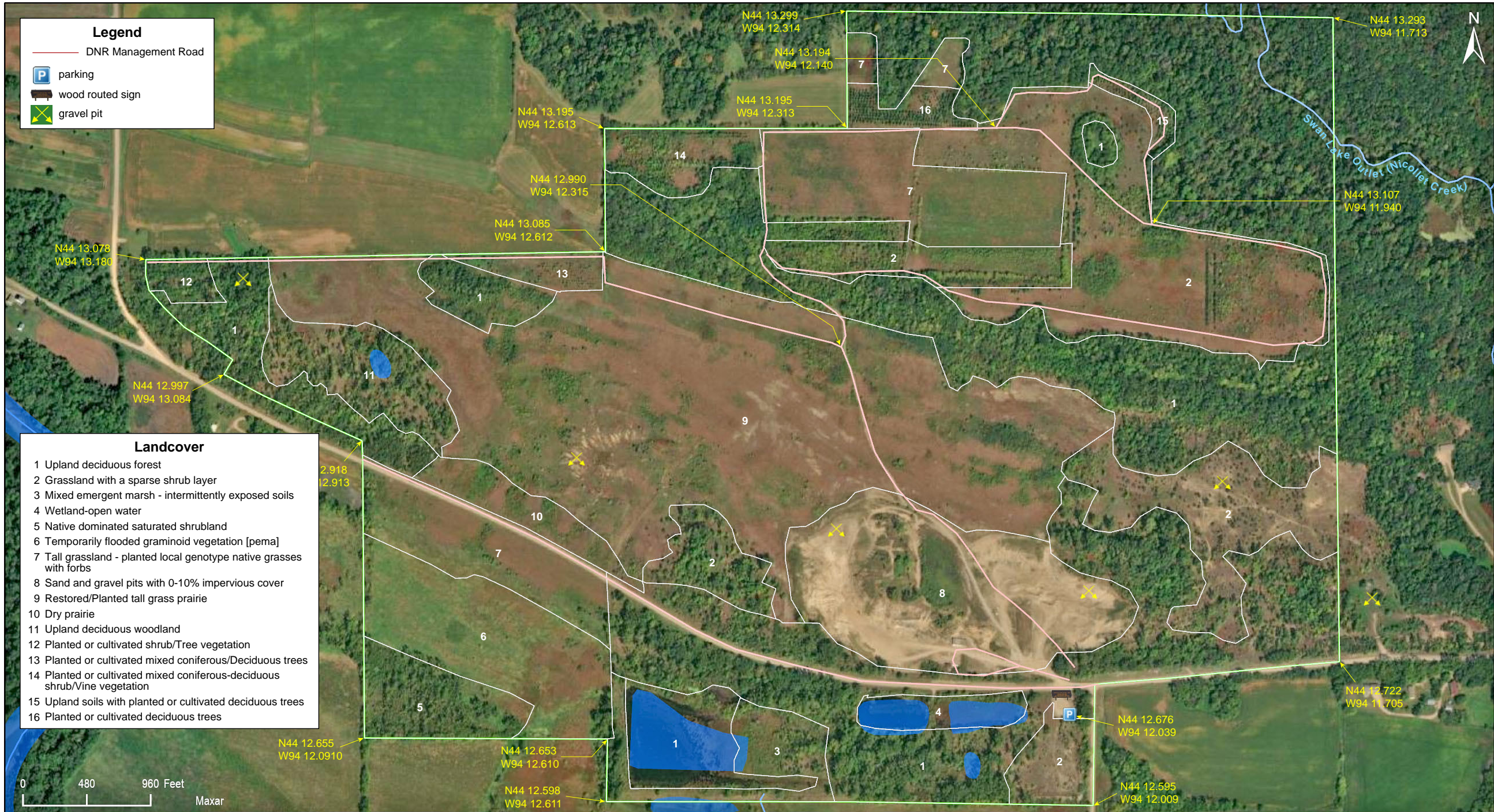
Landcover

Legend

-  DNR Management Road
-  parking
-  wood routed sign
-  gravel pit

Landcover

- 1 Upland deciduous forest
- 2 Grassland with a sparse shrub layer
- 3 Mixed emergent marsh - intermittently exposed soils
- 4 Wetland-open water
- 5 Native dominated saturated shrubland
- 6 Temporarily flooded graminoid vegetation [pema]
- 7 Tall grassland - planted local genotype native grasses with forbs
- 8 Sand and gravel pits with 0-10% impervious cover
- 9 Restored/Planted tall grass prairie
- 10 Dry prairie
- 11 Upland deciduous woodland
- 12 Planted or cultivated shrub/Tree vegetation
- 13 Planted or cultivated mixed coniferous/Deciduous trees
- 14 Planted or cultivated mixed coniferous-deciduous shrub/Vine vegetation
- 15 Upland soils with planted or cultivated deciduous trees
- 16 Planted or cultivated deciduous trees



Swan Lake WMA North Star Unit



Swan Lake WMA North Star Unit

Directions and Notes from Minnesota DNR

Directions: From Nicollet, go 4 miles S on CSAH 23, and 0.5 miles W on CO RD 62.

Notes from MinnesotaSeasons.com

Parking

There is a parking lot with a gravel surface on the south side of County Road 62 (506th St.) near the south boundary of the unit.
N44 12.676, W94 12.039

DISCLAIMER OF WARRANTIES AND LIMITATIONS OF LIABILITY

MinnesotaSeasons.com, The Nature Conservancy, U.S. Department of Agriculture, Forest Service, U.S. Fish and Wildlife Service, the state of Minnesota, the Minnesota Department of Natural Resources, and their employees, make no representations or warranties, express or implied, with respect to the use of or reliance on the data provided herewith, regardless of its format or means of transmission. There are no guarantees or representations to the user as to the accuracy, currency, completeness, suitability or reliability of this data for any purpose. THE USER ACCEPTS THE DATA AND/OR SOFTWARE "AS IS" AND ASSUMES ALL RISKS ASSOCIATED WITH ITS USE.

IN NO EVENT SHALL MINNESOTASEASONS.COM, TNC, USDA-FS, USFWS, OR MNDNR BE LIABLE FOR ANY DIRECT, INDIRECT, INCIDENTAL, SPECIAL, EXEMPLARY, OR CONSEQUENTIAL DAMAGES (INCLUDING, BUT NOT LIMITED TO, PROCUREMENT OF SUBSTITUTE GOODS OR SERVICES; LOSS OF USE, DATA, OR PROFITS; OR BUSINESS INTERRUPTION) HOWEVER CAUSED AND ON ANY THEORY OF LIABILITY, WHETHER IN CONTRACT, STRICT LIABILITY, OR TORT (INCLUDING NEGLIGENCE OR OTHERS) ARISING IN ANY WAY OUT OF THE USE OF THIS DATA, EVEN IF ADVISED OF THE POSSIBILITY OF SUCH DAMAGE OR FOR ANY CLAIM BY ANY OTHER PARTY.

Your use of the data is acceptance on your part of the terms and conditions set forth herein.